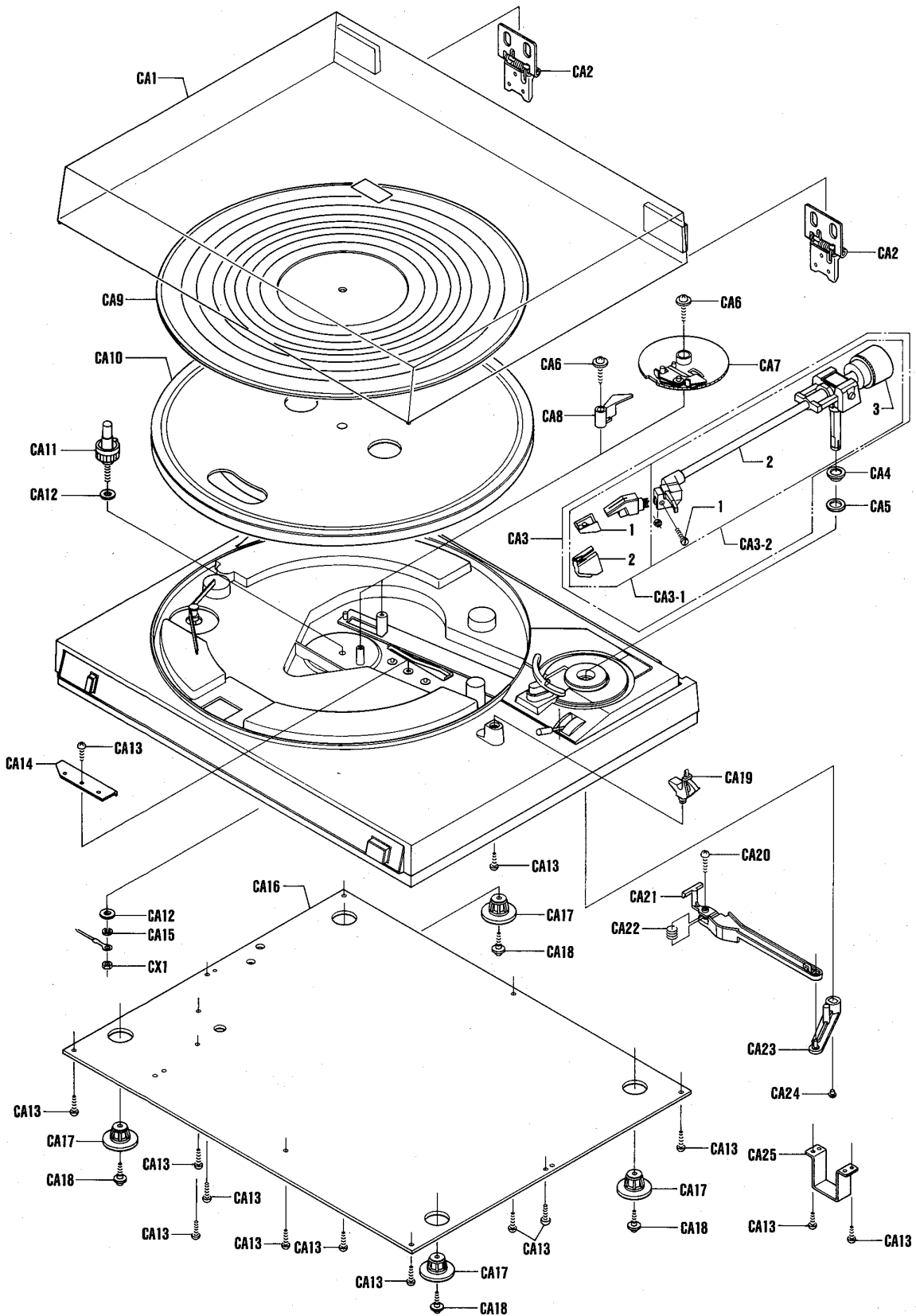
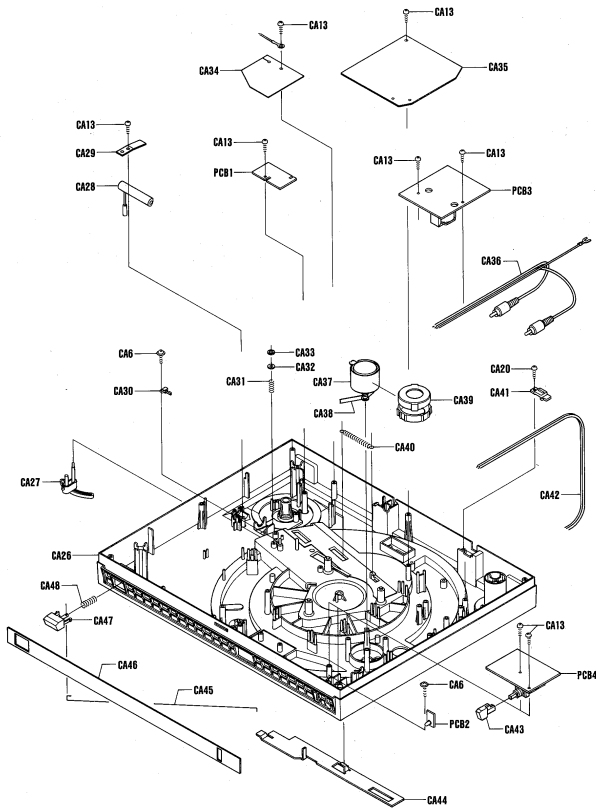


CABINET & CHASSIS EXPLODED VIEW



CABINET & CHASSIS EXPLODED VIEW (Continued)



CABINET & CHASSIS PARTS LIST

PRODUCT SAFETY NOTICE
 Each precaution in this manual should be followed during servicing. Components identified with the IEC symbol Δ in the parts list and the schematic diagram designate components in which safety can be of special significance. When replacing a component identified with Δ , use only the replacement parts designated, or parts with the same ratings of resistance, wattage or voltage that are designated in the parts list in this manual.
 Leakage-current or resistance measurements must be made to determine that exposed parts are acceptably insulated from the supply circuit before returning the product to the customer.

Ref. No.	Part No.	Description	Q'ty	Ref. No.	Part No.	Description	Q'ty
PACKAGE							
	141-6-1189-14104	Box Corrugate-exp (Lid Supplied)	1	CA19	134-0-6031-12300	Arm Rest Assy	1
	141-6-1189-14105	Box Corrugate-exp (Without Lid)	1	CA20	131-2-4201-19503	Screw	12
	141-6-2519-16390	Bag Polyethylene-exp (Lid Supplied)	1	CA21	141-2-7439-50400	Arm	1
	141-6-2519-16490	Bag Polyethylene-exp	1	CA22	141-2-8559-15000	Spring	1
	141-6-2519-16590	Bag Polyethylene-exp (Weight)	2	CA23	141-2-7439-50300	Plate Pick-up Fix	1
	141-6-2519-22090	Poly Cover	1	CA24	134-2-4117-11600	Support Shaft	1
	141-6-2519-22990	Bag Polyethylene-ind	1	CA25	141-2-3519-79600	Angle Mount	1
	141-6-3119-31300	Pad Rear	1	CA26	141-2-1129-39601	Cabinet	1
	141-6-3119-31400	Pad Front	1	CA27	134-2-3310-12500	Support Arm	1
	141-6-3119-22900	Pad (Without Lid)	1	CA28	141-2-1629-10900	Knob	1
	141-6-3119-31500	Pad (Lid Supplied)	1	CA29	141-2-8539-57300	Spring Plate	1
	141-6-3219-00800	Patching Sheet	1	CA30	Δ 4-2319-78740	Leaf Switch (Power) [S1]	1
	141-6-3119-31700	Pad Top	1	CA31	134-2-5101-32300	Spring	1
	141-6-4559-03300	Serial No. Sheet	2	CA32	131-2-4203-83200	Washer, M3.2x8x0.5	1
				CA33	131-2-4220-10502	Ring Snap	1
				CA34	141-2-3229-56200	Cover Shield	1
				CA35	141-2-3229-56900	Cover	1
				CA36	131-0-4004-15003	Wire Shield Assy	1
				CA37	134-0-5011-04100	Motor Assy [M1]	1
				CA38	134-2-6302-11601	Belt	1
				CA39	141-2-4429-00500	Cushion Motor	1
				CA40	141-2-3549-34700	Spring	1
				CA41	131-2-3608-16800	Cramp Wire	1
				CA42	Δ 4-2432-00071	Power Cord	1
				CA43	141-2-1659-58200	Knob	1
				CA44	141-0-3519-25000	Plate Return Assy	1
				CA45	141-2-7359-04300	Rod	1
				CA46	141-2-1439-16508	Panel Control	1
				CA47	141-2-1659-58301	Knob	1
				CA48	141-2-8559-14400	Spring	1
				CX1	106-3-1304-00011	Hex. Nut-3, M4.0	1
				PCB1	4-1329-79160	Phono P.C.B. Assy	1
				PCB2	141-0-1939-14110	LED P.C.B. Assy	1
				PCB3	141-0-1939-14033	Power Supply P.C.B. Assy	1
				PCB4	141-0-1939-14100	Power DC P.C.B. Assy	1
ACCESSORIES							
	131-6-2719-10401	Bag Fan	1				
	134-2-9011-11601	Adapter EP	1				
	142-6-4119-32939	Explanatory Booklet	1				
CABINET							
	141-2-1449-56270	Name Plate	1				
	141-6-4559-03300	Serial No. Sheet	1				
	141-6-4729-37603	Stylus Label	1				
	131-2-3808-14100	Cramp Wire	4				
	141-0-1249-40800	Lid Assy (Lid Supplied)	1				
	141-0-2519-00900	Hinge Assy (Lid Supplied)	2				
	141-0-6419-02801	Pick-up Assy	1				
	4-1579-70070	Cartridge (MG-66)	1				
	4-1579-70080	Stylus (ST-66D)	1				
	141-2-6459-00400	Retainer Needle	1				
	141-0-6419-03100	Tone Arm Assy	1				
	101-3-2502-01013	Screw, Cylinder Hd., -M2.0x10	1				
	141-0-6429-00500	Pick-up Arm Assy	1				
	141-0-6439-00400	Pick-up Weight Assy	1				
	141-2-4569-09800	Spacer	1				
	141-2-4539-41300	Washer	1				
	131-2-4201-26300	Screw	4				
	134-0-6030-12000	Gear Cycling Assy	1				
	141-2-7439-50200	Arm	1				
	134-2-6102-15702	Mat Turntable	1				
	141-2-3229-01001	Turntable	1				
	141-0-7519-04901	Shaft Turntable Complet	1				
	141-2-4569-09900	Washer	2				
	131-2-4201-19502	Screw	12				
	141-2-3519-77800	Plate	1				
	131-2-4203-19703	Washer	1				
	141-2-1259-09400	Plate Bottom	1				
	141-2-4459-37802	Cushion	4				
	134-2-4201-13401	Screw	4				

NOTES:
 1. Parts order must contain Model Number, Part Number and Description.
 2. Ordering quantity of screws and resistors must be multiple of 10 pcs.