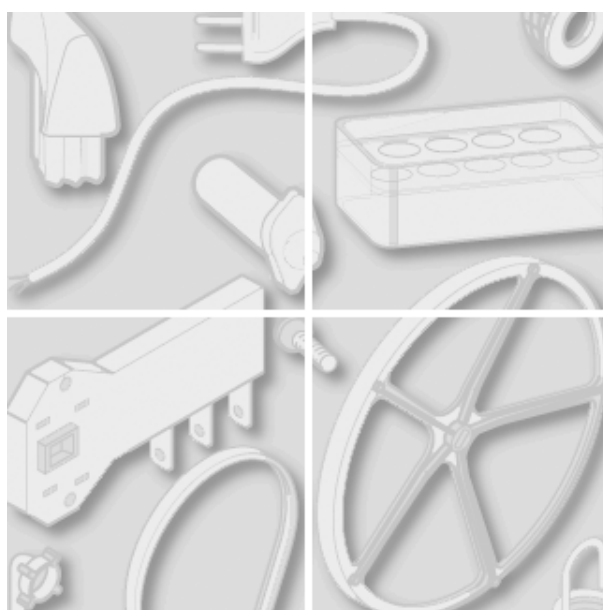


Indesit Company



typ modelu:
DG5145W

Kod handlowy:
12227

Informacje Główne

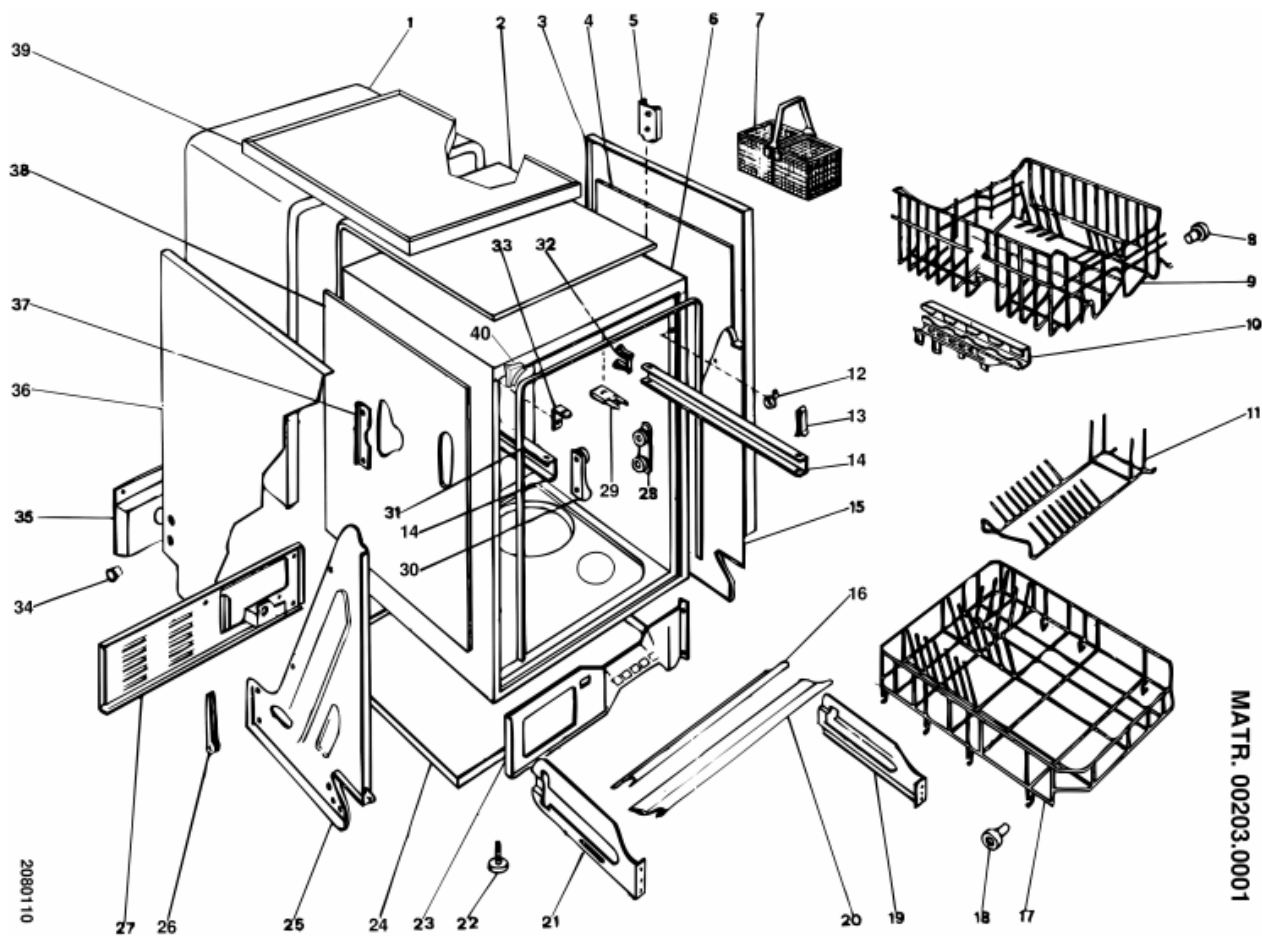
Przewodnik Dokumentacji Technicznej

Możesz tutaj odnaleźć podstawowe informacje ułatwiające korzystanie z dokumentacji technicznej

1. Modele tej samej gamy posiadają wspólne rysunki, które przedstawiają najbogatszy zestaw części; generalnie wybrany model niekoniecznie posiadać będzie w spisie części wszystkie pozycje przedstawione na rysunku
 2. Niektóre części nie mogą być przedstawione bezpośrednio na rysunku (instrukcje użytkownika, zestawy montażowe itd.). Można je odnaleźć w liście części pod pozycją gdzie są zainstalowane lub pod pozycją 09
 3. W prawym górnym rogu każdego rysunku widnieje numer seryjny wskazujący początek produkcji danej gamy urządzeń. Niektóre modele mogą posiadać więcej niż jeden rysunek dla podanej kategorii, każdy inny dla różnych numerów seryjnych.
 4. Rysunki złożeniowe mogą wymagać dalszych uaktualnień po ich publikacji. Nowe części zostaną dodane do odpowiednich oznaczeń numerycznych rysunku. Oznaczenie kodowe modyfikacji rysunku zawarte jest w ostatnich 4 cyfrach numeru seryjnego przedstawionego w prawym górnym rogu rysunku.
 5. Lista części odnosząca się do danego rysunku zawiera spis części tylko dla wybranego modelu; dostępne są dodatkowe informacje dla każdej części.
- REF. Numer referencyjny do tabeli; SUBSTITUT: lista części które zastępują dany kod zachowując takie same charakterystyki funkcjonalne
- KOD HANDLOWY: lista wariantów modelu (pokazana w nazwie modelu) gdzie dana część jest zastosowana; UWAGA: kod informacji potrzebny do interwencji, prześledź zmiany aby poprawnie ustalić kod części
6. Niektóre notatki techniczne są ogólne dla danej sekcji, zatem nie mogą być związane tylko konkretną częścią. Aby poruszać się w dokumentacjach modelu sprawnie, pomocne jest czytanie notatek i monitorowanie uaktualnień dokumentacji.
 7. Okładka dokumentacji technicznej przedstawia model sprzętu oraz jego kod handlowy.

2080110

rysunki



2080110

Lista części

Ref.	kod	Od S/N	Do S/N	Zamiennik	opis	Notatka	kod
000	C00048337				user instructions 'giugiario'		
001	C00031964				soundproofing		
002	C00031958				sound damping panel - top+back		
003	C00030738			1 x C00041057	side panel (568mm) rh - white		
004	C00031959				sound damping panel - rh		
005	C00018244				wzmocnienie podtrzymania		
006	C00031963				wash chamber		
006	C00034017				counterweight		
006	C00034018				counterweight support		
007	C00032026				kosz na sztućce 'ls45'		
008	C00018287				kółko koszyka gór.+sworzeń		
009	C00032028				kosz górny 'ls45 - 8 nakryć'		
010	C00032029				wspornik kosza gór. 'ls45'		
011	C00032025				kratka na talerze 'ls45'		
012	C00029420			1 x C00128452 1 x C00128542	door centering device (closed)		
013	C00031968				ogranicznik przedni kosza 'ls45'		
014	C00030327				runner (568mm) - upper basket		
015	C00032005				side support - rh		
016	C00031965				profil uszczelnienia dolny		
016	C00033178				lever - door spring adjustment		
017	C00032027				kosz dolny 'ls45 - 8 nakryć'		
018	C00018286				kółko koszyka dol.+sworzeń		
019	C00027090				adjustable plinth support - rh		
020	C00031966				uszczelnienie doln. zbiornika 'ls45'		
021	C00027091				adjustable plinth support - lh		
022	C00018316				nóżka 'l=15mm.'		
023	C00031999				lower front support		
025	C00032006				side support - lh		
026	C00031996				rear wheel		
027	C00031995				lower rear support		
028	C00025708				wspornik prowadnicy kosza		
029	C00040161				door catch plate (wash chamber)		
029	C00040162				door catch plate (wash chamber)		
030	C00031970				support (long) - upper basket		

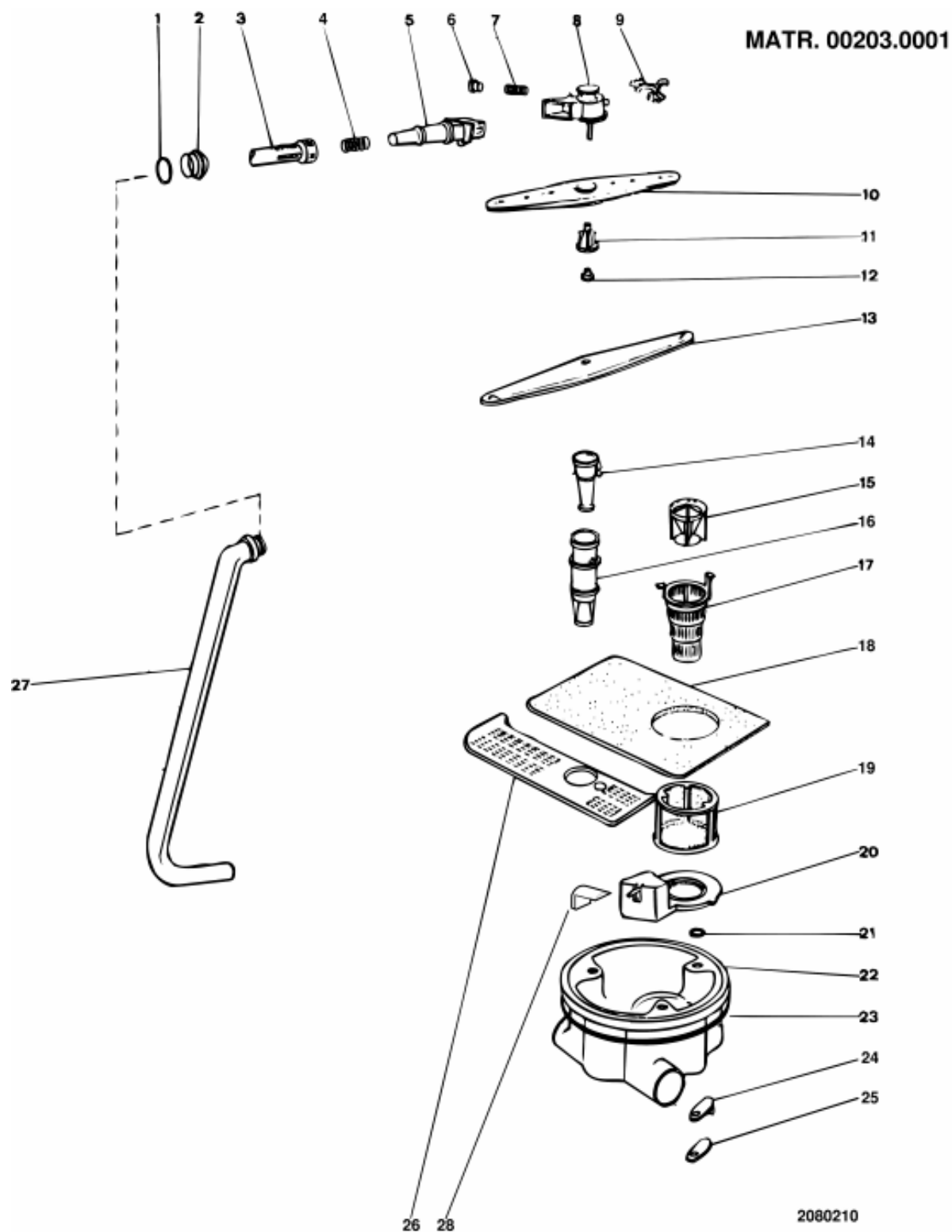
2080110

Lista części

Ref.	kod	Od S/N	Do S/N	Zamiennik	opis	Notatka	kod
030	C00033181				support (short) - upper basket		
031	C00031961				uszczelnienie drzwiczek 'ls45'	0208008	
031	C00049194				uszczelnienie drzwiczek 'ls45 cm'	0208008	
032	C00018283				sworzeń trzymający kosz górny		
032	C00031969				rear stop - upper basket		
034	C00025736				hole plug - white		
035	C00031994				protection channel - electrovalve		
036	C00030739			1 x C00041057	side panel (563mm) lh - white		
037	C00031967				guide support reinforcement		
038	C00031960				sound damping panel - lh		
039	C00048335				cover white 27		
040	C00049195				kątownik do uszczelki drzwi 'ls	0208008	
099	C00018284				edge protection strip		

2080210

rysunki



2080210

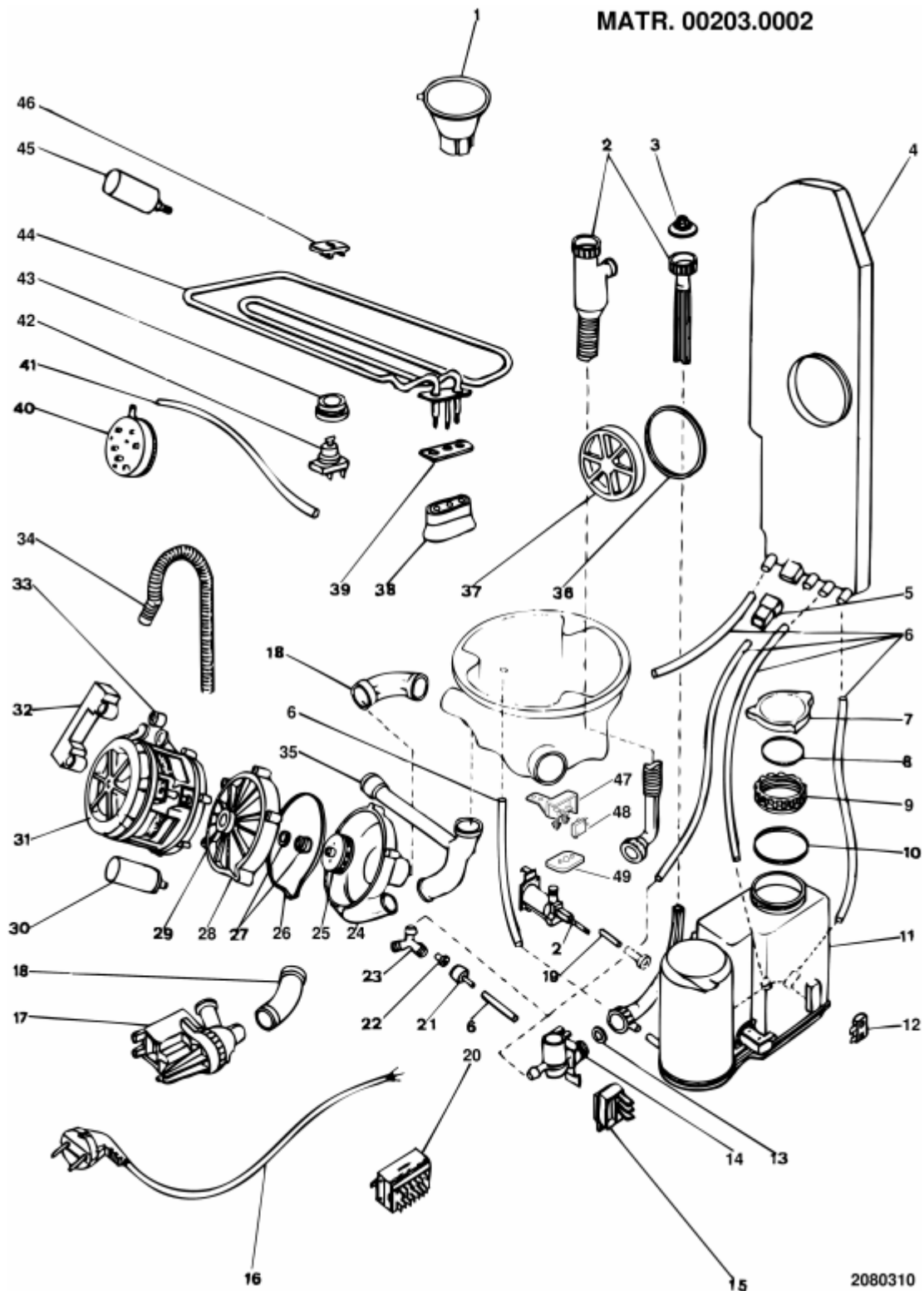
Lista części

Ref.	kod	Od S/N	Do S/N	Zamiennik	opis	Notatka	kod
001	C00031971				uszczelnienie dyszy 'ls45'		
002	C00031973				dysza 'ls45'		
003	C00032035				kolektor ze stożkiem venturiego		
004	C00032033				sprężyna kolektora stoż. venturi		
005	C00032036				stożek venturiego 'ls45'		
006	C00032032				wspornik sprężyny dyfuzora		
007	C00032034				sprężyna dyfuzora stoż. venturi		
008	C00032037				dyfuzor stożek venturiego 'ls45'		
009	C00032030				wspornik dyfuzora stożk. venturi		
010	C00032038				wirnik górn. 'ls45'		
011	C00018275				tuleja wirnika 'ls712'		
012	C00032031				nakrętka mocująca wirnik górny		
013	C00031982				lower wash arm		
014	C00025741				wspornik dolnego wirnika		
015	C00031980				dyfuzor centralny 'ls45'		
016	C00031976				regulator przepływu 'ls45'		
017	C00031979				filtr centraln. 'ls45'		
018	C00031975			1 x C00071853	filtr inox 'ls45'		
019	C00031978				filtr do prania 'ls45'		
020	C00031981				air trap		
021	C00018166				seal - sump screw		
022	C00031983				sump		
023	C00031974				uszczelnienie studzienki 'ls45'		
025	C00032756				retaining plate - sump		
026	C00031977				pokrycie studzienki 'ls45'		
027	C00031972				rura zasil. wirnik górny'ls4		

2080310

rysunki

MATR. 00203.0002



2080310

2080310

Lista części

Ref.	kod	Od S/N	Do S/N	Zamiennik	opis	Notatka	kod
001	C00032023			1 x C00005819	salt funnel		
002	C00032602			1 x C00003070	mains inlet hose mt.1,5		
003	C00018315			1 x C00005781	sealing washer+filter - mains inlet		
004	C00032121				air-break 'k-ls 6'		
006	C00024209				hose		
006	C00026923				hose e.v. - 3 way dispenser		
006	C00032041				hose set		
007	C00032039				salt cap		
008	C00032131				seal - salt cap		
009	C00009784				retaining ring - softener		
010	C00018169				seal - softener / wash chambder		
011	C00032545				water softener m18		
012	C00032128				switch salt detector		
014	C00032443				elektrozawór '3.6 l/1'		
015	C00031998				terminal block		
016	C00032122				supply cable		
017	C00032001				pompa spust. 220v/50hz 'askoll-		
018	C00031985				hose - drain pump inlet		
024	C00031992				kołpak przedni pompa pranie 'ls45'		
025	C00031993			1 x C00193340	wirnik pompa odwir. 'ls45'		
026	C00031988				uszczelnienie pompy prania 'ls45'		
027	C00018162				uszczelnienie pompy rotacyjnej		
028	C00031991				kołpak tylny pompa pranie 'ls45'		
029	C00018233				łożysko pompa elektr. 12x32x10		
030	C00031986				kondensator 6 mf		
030	C00032112				capacitor protection		
031	C00031987				pompa elekt. płukanie 220-	0208009	
032	C00031990				support bracket - wash motor		
033	C00031989				rubber support - wash motor		
034	C00021385			1 x C00041101	drain hose - to sink-		
035	C00031984				washing pump delivery pipe		
036	C00022636				seal- air break / wash chamber		
037	C00025964				inlet ferrule x air-break		
038	C00025795				protection cover - element		
039	C00018136				heater gasket		

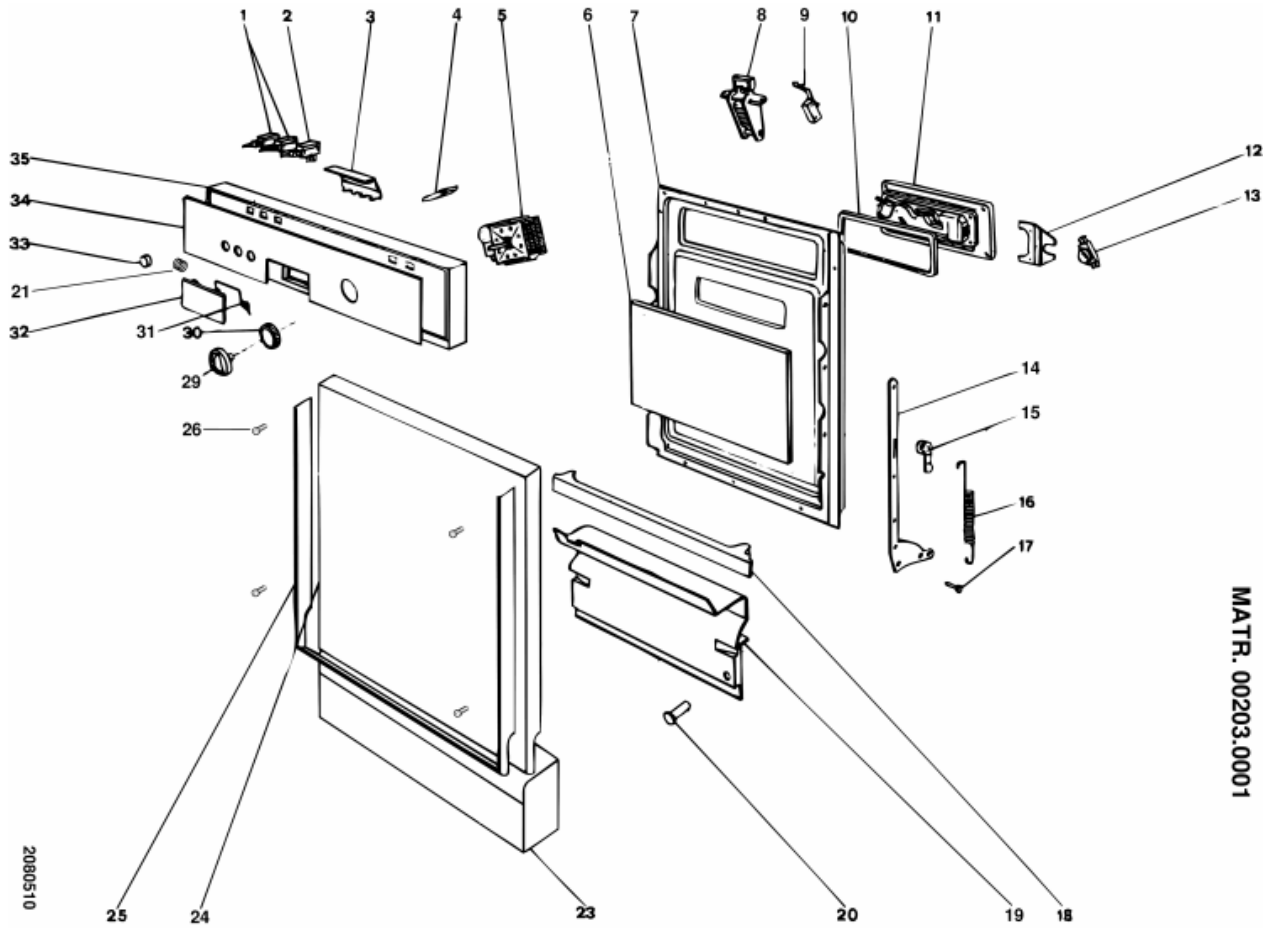
2080310

Lista części

Ref.	kod	Od S/N	Do S/N	Zamiennik	opis	Notatka	kod
040	C00032003				presostat styk. elbi14-24 eaton13-	n1040268	
041	C00032002				tube - pressure switch		
042	C00033249				termostat zbiornika 2tt na61-nc85		
043	C00025793				uszczelnienie termostatu		
044	C00031962				opornik 1800w/220v 'ls45'		
045	C00032129				filtr tłumiący '3 faston femmina'		
046	C00025796				termostat plate		

2080510

rysunki



MATR. 00203.0001

2080510

2080510

Lista części

Ref.	kod	Od S/N	Do S/N	Zamiennik	opis	Notatka	kod
002	C00032010				konsola on/off 'ls45'		
003	C00048330				zamk. uchwyt panel ster..biały		
004	C00034175				pilot lamp		
004	C00034176				pilot lamp		
005	C00033119				timer eaton ec 4197.01a 'stały'	0208003	
005	C00034386				harness eaton ec 4197.		
006	C00031952				damping panel - door		
007	C00047546				inner door panel - stainless		
008	C00048332				zamknięcie drzwi 'dg5345w'		
009	C00040141				microwyłacznik zamka		
010	C00032130				gasket - detergent/rinseaid		
011	C00031957			1 x C00104789	detergent/rinseaid electro		
014	C00031954				zawias 'ls45'		
015	C00025698				tuleja sprężyny zawias z		
016	C00034007				sprężyna zawiasu 'ls45'		
017	C00018152				sworzeń zawiasu 'ls712-912'		
018	C00034008				steam sponge		
019	C00032445				lower front cover - electrics		
021	C00047523				spring - handle cover		
023	C00045827				plinth cover kit + vanes - white 27		
024	C00034005				drzwi biał. 26 45 cm 'ls455'		
030	C00044894				pokrętko timera b27 giugiaro		
032	C00048329			1 x C00063849	pokrywa uchwyt biała		
033	C00044826				przycisk /giugiaro-b.27' indesit'		
035	C00048336				panel ster. biały 27'dg5145w'		

Notatki

0208002: REPLACEMENT OF HANDLE COVER

To replace the handle cover on models with serigraphy, replace the front cover which is supplied complete with handle cover, handling lock and serigraphy.

For out-of-warranty appliances clients may request only the handle cover to reduce the cost. In this case however the handle cover supplied will not have serigraphy.

0208003: LOAD BY TIMER/PRESSURE SWITCH 4197

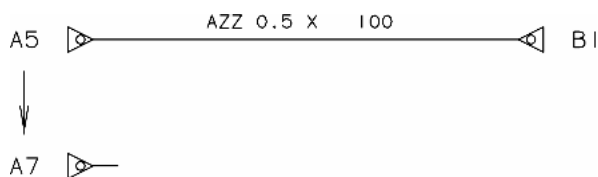
There is a corresponding water load on the Eaton Timer EC 4197 which is carried out at a preset time.

If the mains water pressure does not exceed 0,6-0,7 Atm. the machines stops since not enough water is loaded to carry out the wash cycle.

In this case the "blue" wire which connects contact "A5" to "B1" should be moved. The wire should be taken from contact "A5" to the free contact "A7" thereby making a new contact between contacts "A7" and "B1".

The machine will now load sufficient water to proper functioning regardless of the length of time.

fig.2060639B



0208008: NEW TUB SEAL + CORNER PIECE - LVS45CM

As from serial no. 60310.0001 a new gasket code 049194 and a new corner piece code 049195 fitted between the tub and the gasket, has been mounted on the 45 cm dishwasher model in order to improve the door closing.

The new gasket is not interchangeable with the premodification part code 031961 which will continue to be supplied normally.

0208009: CONNECTION OF MOTOR AND APPLIANCE WIRING

As from October, new motors with a new two-way connector are mounted on all 45 free standing built-in and flush mount dishwashers; the motors are interchangeable with the premodification motors Code 031987 and Code 036727 and have the same SAT code.

The old motors may be used instead of the new motors by introducing the following modifications:

- 1) Remove the two fastons from the two-way connector of the appliance wiring;
- 2) Fit a faston cap on both, extend the black wire by about 12 cm using an extra length of wire and a male faston connector as shown in the fig.2080019B.

fig.2080019B

A BLACK WIRE

B ADDITION WIRE 12 CM

C TERMINAL CONNECTor



Legenda

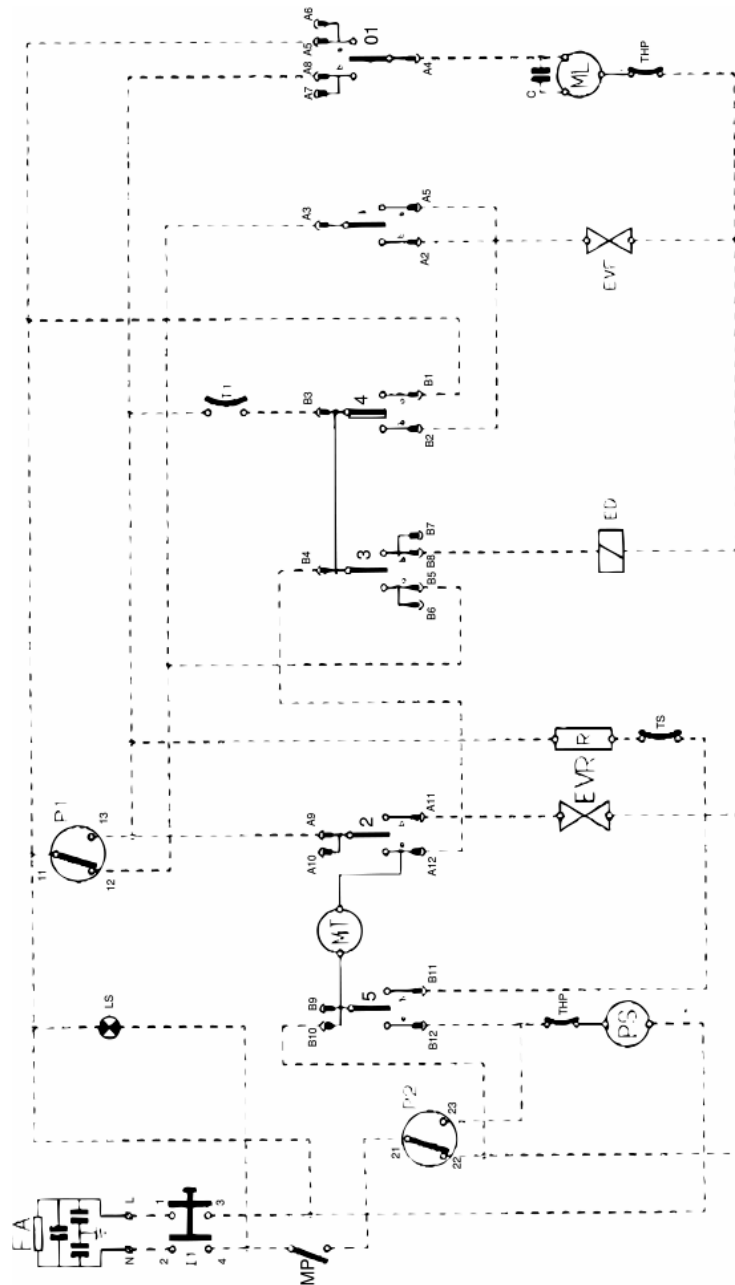
Legenda: 208002a

A..	Timer contact	LPA	Door open
AQS	Aquastop electrovalve	LPR	Prewash LED
B..	Timer contact	LRI	Rinse LED
C	Condensor	LS	Mains LED -Pilot lampe On/Off
C..	Timer contact	LSB	Polisher LED
CL	Slow cam	LSC	Cycle ranning lamp
CM	Wash pump motor connector	LSE	Acquastop LED
CN	Connector	LSS	Salt LED
CV	Fast cam	LV	Fan off lamp
D-ED	Dispenser - Electric dosing device	M	Terminal box
D..	Timer contact	MB	Polisher dip-switch
DB	Brightener dispenser	ME	Acquastop dip-switch
DD	Display - Detergent dispenser	ML	Wash motor
E1	Cold water electrovalve	MM	Handle dip-switch
E2	Regeneration electrovalve	MP	Door dip-switch
E3	Hot water electrovalve	MR	Delay-timer motor - Terminal board
ECO	Saving switch	MT	Timer motor
ED	Detergent/Brightener dispenser	MTR	Fast forward timer motor
EV1	Cold water electrovalve MM- Handle dip-switch	MV	Motor fan
EV1/2	Half-load electrovalve	P	Pressure switch
EV2	Regeneration electrovalve	P..	Pressure switch contact
EV3	Hot water electrovalve	P1	Stage 1 pressure
EVC	Hot water electrovalve	P2	Stage 2 pressure switch
EVF	Cold water electrovalve	PAP	High pressure switch
EVR	Regeneration water electrovalve	PO	Overflow pressure switch
F	Anti-interference filter ML- Wash motor	PS	Drain pump
FA	Radio interferences	PULS	Push-button panel
I1	On/Off switch - Plus cycle switch -IEC cycle	R	Heating element
I1/2	Switch half-load	R.D.	Delay rotary selector
I2	Fast switch -IEC cycle switch (standard) -	RA	Heating element drying
I2H	2-hour delay switch	ROT D	Delay rotary selector
I3	Saving switch- Switch for cycle with no pre-	ROT.	Rotary selector
I4	Switch for cycle fresh dirty	S	Motor overload cutout

I4H	4-hour delay switch	SC	Selector cycli
I5-ICR	Fast cycle switch	SS	Salt detector
I6	Soak cycle switch	ST	START
I6H	6-hour delay switch	T..	Delay-tymer contact
IAQS	Aquastop switch	T1	Power supply earth cable -Thermostat 45°C
ID	Switch display	T2	Lid earth -Thermostat 55°C
IE	Saving switch	T3	Timer earth -Thermostat 65°C
IEXD	Exstra dray switch	T36	36°C N.O. Thermostat
IG	Main switch	T4	Heating element earth
IMV	Off motor fan switch	T46	46°C N.O. Thermostat
IP	High temperature switch	T5	Drain pump earth
IS	Cut-off switch	T57	57°C N.O. Thermostat
ISB	Polisher led switch	T6	Wash motor earth
ISS	Salt LED switch	T8	External lid earth
ITR	Heating element switch	TE	Relay switch
L	Mains LED	THP	Thermoprotector
L1	Cycle 1 lamp	TM	Timer
L1/2	Lamp cycle half-load	TS	Safety thermostat
L2	Cycle 2 lamp	TS 40	Thermostat 40 °C
L3	Cycle 3 lamp	TS 50	Thermostat 50 °C
L4	Cycle 4 lamp	TS 62	Thermostat 62 °C
L5	Cycle 5 lamp	TS1	Min. temperature thermostat
L6	Cycle 6 lamp	TS2	Max. temperature thermostat
LA	Drying LED	TT	Terminal box support earth
LAQ	Aquastop on lamp	Tcp	nner-door earthing connection
LC	Cycle ranning lamp	Tfa	Radio interference
LD	Delay activated lamp	Tml	Pump wash motor earthing connection
LE	Saving cycle	Tpg	Large door earthing connection
LH2	2-hour delay lamp	Tpi	Inspection door earthing connection
LH4	4-hour delay lamp	Tpr	Pressure switch
LH6	6-hour delay lamp	Tps	Discharge pump earthing connection
LL	Wash LED	Tr	Heating element
LP	High temperature LED	Tte	Delay-timer earthing connection

Cod. 208011b

Schematy elektryczne i linki

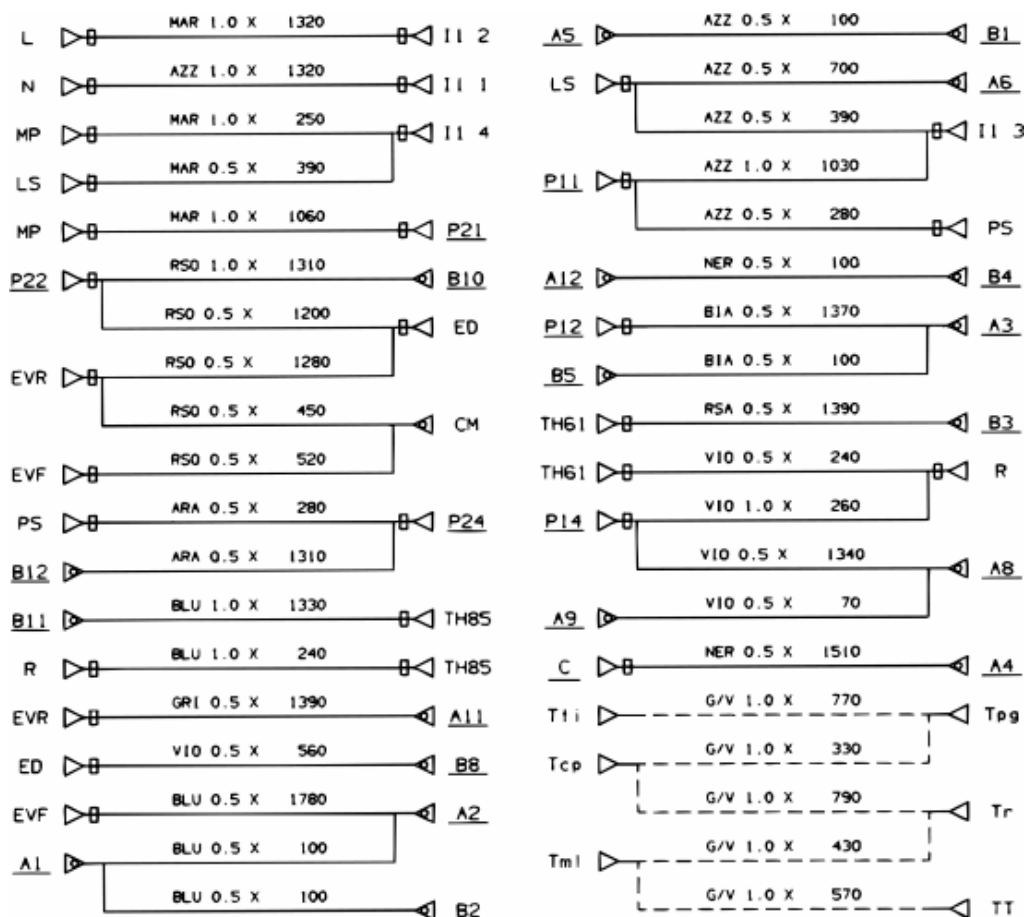


Legenda

Legenda: 208011b

Cod. 208015c

Schematy elektryczne i linki



Legenda

Legenda: 208015c

A..	Timer contact	LPA	Door open
AQS	Aquastop electrovalve	LPR	Prewash LED
B..	Timer contact	LRI	Rinse LED
C	Condensor	LS	Mains LED -Pilot lampe On/Off
C..	Timer contact	LSB	Polisher LED
CL	Slow cam	LSC	Cycle ranning lamp
CM	Wash pump motor connector	LSE	Acquastop LED
CN	Connector	LSS	Salt LED
CV	Fast cam	LV	Fan off lamp
D-ED	Dispenser - Electric dosing device	M	Terminal box
D..	Timer contact	MB	Polisher dip-switch
DB	Brightener dispenser	ME	Acquastop dip-switch
DD	Display - Detergent dispenser	ML	Wash motor
E1	Cold water electrovalve	MM	Handle dip-switch
E2	Regeneration electrovalve	MP	Door dip-switch
E3	Hot water electrovalve	MR	Delay-timer motor - Terminal board
ECO	Saving switch	MT	Timer motor
ED	Detergent/Brightener dispenser	MTR	Fast forward timer motor
EV1	Cold water electrovalve MM- Handle dip-switch	MV	Motor fan
EV1/2	Half-load electrovalve	P	Pressure switch
EV2	Regeneration electrovalve	P..	Pressure switch contact
EV3	Hot water electrovalve	P1	Stage 1 pressure
EVC	Hot water electrovalve	P2	Stage 2 pressure switch
EVF	Cold water electrovalve	PAP	High pressure switch
EVR	Regeneration water electrovalve	PO	Overflow pressure switch
F	Anti-interference filter ML- Wash motor	PS	Drain pump
FA	Radio interferences	PULS	Push-button panel
I1	On/Off switch - Plus cycle switch -IEC cycle	R	Heating element
I1/2	Switch half-load	R.D.	Delay rotary selector
I2	Fast switch -IEC cycle switch (standard) -	RA	Heating element drying
I2H	2-hour delay switch	ROT D	Delay rotary selector
I3	Saving switch- Switch for cycle with no pre-	ROT.	Rotary selector
I4	Switch for cycle fresh dirty	S	Motor overload cutout

I4H	4-hour delay switch	SC	Selector cycli
I5-ICR	Fast cycle switch	SS	Salt detector
I6	Soak cycle switch	ST	START
I6H	6-hour delay switch	T..	Delay-tymer contact
IAQS	Aquastop switch	T1	Power supply earth cable -Thermostat 45°C
ID	Switch display	T2	Lid earth -Thermostat 55°C
IE	Saving switch	T3	Timer earth -Thermostat 65°C
IEXD	Exstra dray switch	T36	36°C N.O. Thermostat
IG	Main switch	T4	Heating element earth
IMV	Off motor fan switch	T46	46°C N.O. Thermostat
IP	High temperature switch	T5	Drain pump earth
IS	Cut-off switch	T57	57°C N.O. Thermostat
ISB	Polisher led switch	T6	Wash motor earth
ISS	Salt LED switch	T8	External lid earth
ITR	Heating element switch	TE	Relay switch
L	Mains LED	THP	Thermoprotector
L1	Cycle 1 lamp	TM	Timer
L1/2	Lamp cycle half-load	TS	Safety thermostat
L2	Cycle 2 lamp	TS 40	Thermostat 40 °C
L3	Cycle 3 lamp	TS 50	Thermostat 50 °C
L4	Cycle 4 lamp	TS 62	Thermostat 62 °C
L5	Cycle 5 lamp	TS1	Min. temperature thermostat
L6	Cycle 6 lamp	TS2	Max. temperature thermostat
LA	Drying LED	TT	Terminal box support earth
LAQ	Aquastop on lamp	Tcp	nner-door earthing connection
LC	Cycle ranning lamp	Tfa	Radio interference
LD	Delay activated lamp	Tml	Pump wash motor earthing connection
LE	Saving cycle	Tpg	Large door earthing connection
LH2	2-hour delay lamp	Tpi	Inspection door earthing connection
LH4	4-hour delay lamp	Tpr	Pressure switch
LH6	6-hour delay lamp	Tps	Discharge pump earthing connection
LL	Wash LED	Tr	Heating element
LP	High temperature LED	Tte	Delay-timer earthing connection