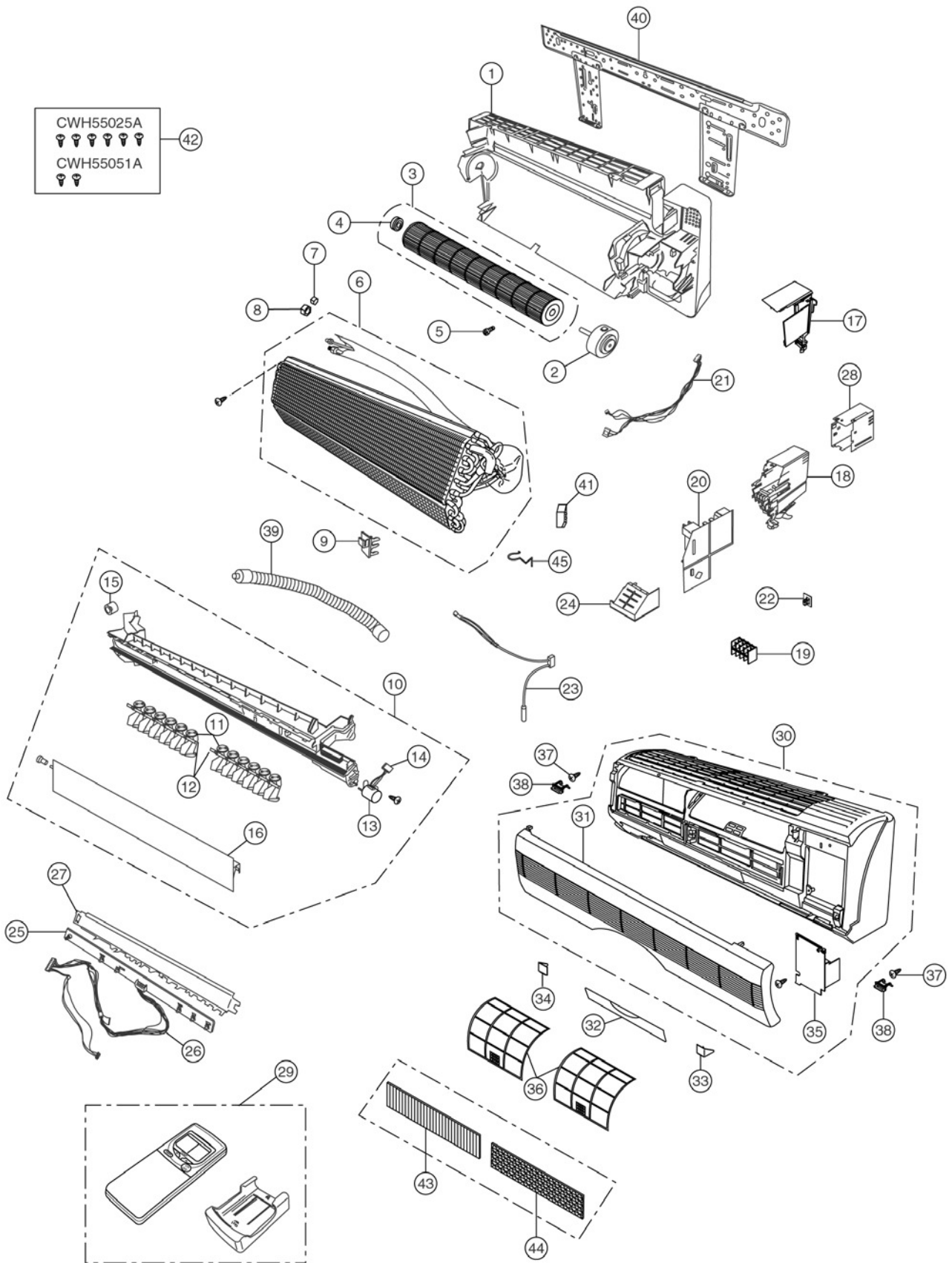


# 15 Exploded View

## CS-V7BK / CS-V9BK / CS-V12BK



Note:  
 The above exploded view is for the purpose of parts disassembly and replacement.  
 The non-numbered parts are not kept as standard service parts.

# 16 Replacement Parts List

<Model: CS-V7BPKG / CS-V9BPKG / CS-V12BPKG>

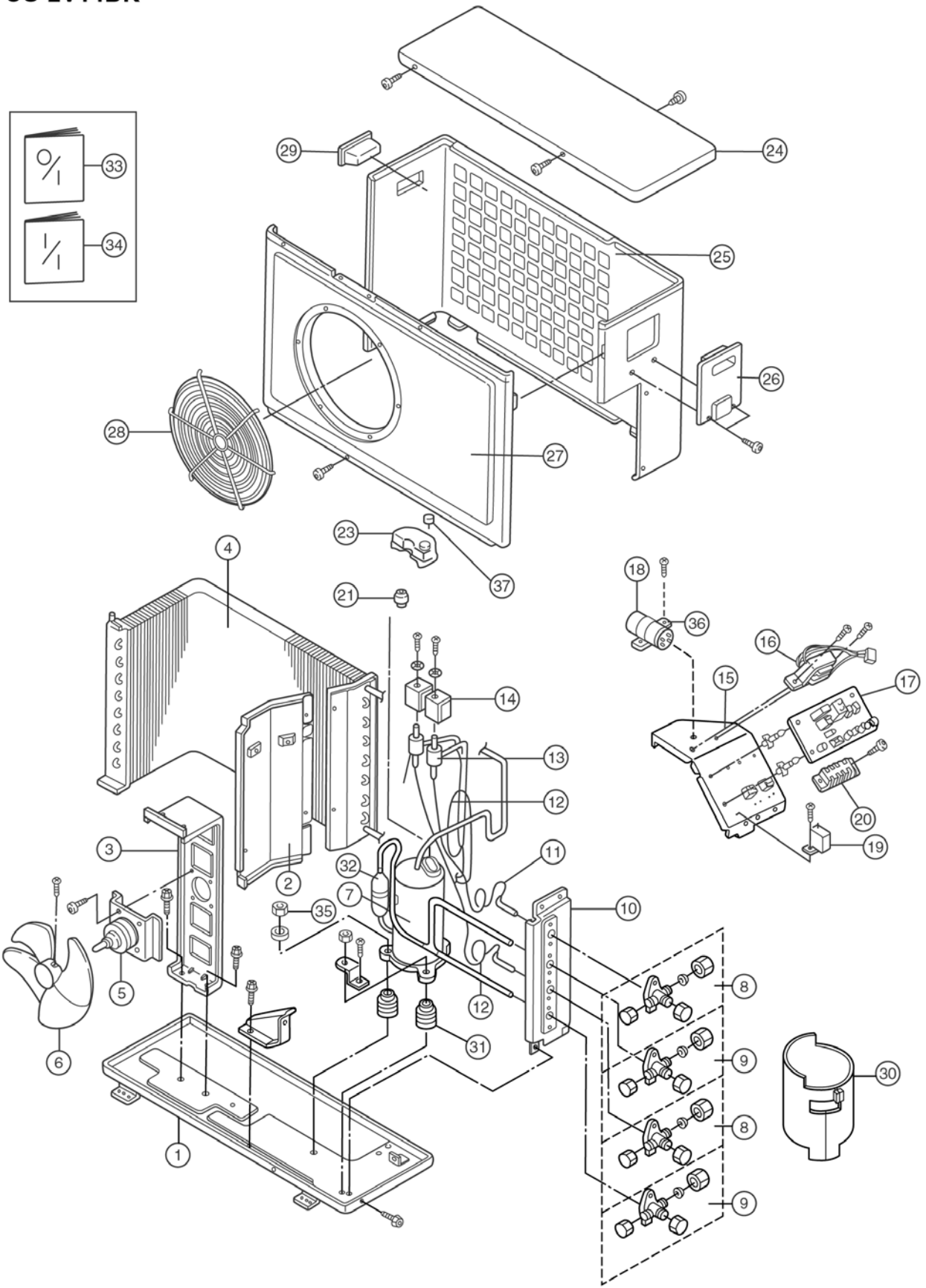
REF. NO.	PART NAME & DESCRIPTION	QTY.	CS-V7BPKG	CS-V9BPKG	CS-V12BPKG	REMARKS
1	CHASSY COMPLETE	1	CWD50C1231	←	←	
2	FAN MOTOR	1	CWA921060	←	←	0
3	CROSS FLOW FAN COMPLETE	1	CWH02C1012	←	←	
4	BEARING ASS'Y	1	CWH64K007	←	←	
5	SCREW - CROSS FLOW FAN	1	CWH4580304	←	←	
6	EVAPORATOR	1	CWB30C1143	←	CWB30C1124	
7	FLARE NUT	1	CWH6002140 (1/4")	←	←	
8	FLARE NUT	1	CWT25005 (3/8")	←	CWT25007 (1/2")	
9	INTAKE AIR SENSOR HOLDER	1	CWH32142	←	←	
10	DISCHARGE GRILLE COMPLETE	1	CWE20C2101	←	←	
11	VERTICAL VANE	12	CWE241068	←	←	
12	CONNECTING BAR	2	CWE261024	←	←	
13	AIR SWING MOTOR	1	CWA98259	←	←	0
14	LEAD WIRE - AIR SWING MOTOR	1	CWA67C3977	←	←	
15	CAP - DRAIN TRAY	1	CWH52C1001	←	←	
16	HORIZONTAL VANE	1	CWE241070	←	←	
17	PARTICULAR PIECE	1	CWD932162	←	←	
18	CONTROL BOARD	1	CWH102103	←	←	
19	TERMINAL BOARD COMPLETE	1	CWA28C2082	←	←	0
20	ELECTRONIC CONTROLLER - MAIN	1	CWA742779	CWA742780	CWA742781	0
21	LEAD WIRE - FAN MOTOR	1	CWA67C3729	←	←	
22	ELECTRONIC CONTROLLER - RECEIVER	1	CWA73C1124	←	←	0
23	SENSOR COMPLETE	1	CWA50C608	←	←	0
24	CONTROL BOARD FRONT COVER	1	CWH131090	←	←	
25	ELECTRONIC CONTROLLER - INDICATOR	1	CWE39C1063	←	←	0
26	LEAD WIRE - INDICATOR	1	CWA67C3724	←	←	
27	INDICATOR HOLDER	1	CWD932163	←	←	
28	CONTROL BOARD TOP COVER	1	CWH131091	←	←	
29	REMOTE CONTROL COMPLETE	1	CWA75C2161	←	←	0
30	FRONT GRILLE COMPLETE	1	CWE11C2329	←	←	
31	INTAKE GRILLE	1	CWE221036	←	←	
32	CONTROL PANEL	1	CWE312114	←	←	
33	DECORATION BASE (R)	1	CWE351067	←	←	
34	DECORATION BASE (L)	1	CWE351068	←	←	
35	GRILLE DOOR	1	CWE141033	←	←	
36	AIR FILTER	2	CWD001047	←	←	
37	SCREW - FRONT GRILLE	2	XTN4+16C	←	←	
38	CAP - FRONT GRILLE	2	CWH521062	←	←	
39	DRAIN HOSE	1	CWH85287	←	←	
40	INSTALLATION PLATE	1	CWH36K1006	←	←	
41	ANTI-VIBRATION BUSHING	1	-	-	CWH501023	
42	BAG COMPLETE - INSTALLATION SCREW	1	CWH82C067	←	←	
43	AIR PURIFYING FILTER	1	CWMD00C0001	←	←	0
44	SOLAR DEODORIZING FILTER	1	CWMD00C0002	←	←	0
45	PIPE SENSOR HOLDER	1	CWH32143	←	←	

(Note)

- All parts are supplied from MAICO, Malaysia (Vendor Code: 061).
- "O" marked parts are recommended to be kept in stock.

# 17 Exploded View

CU-2V14BK



Note:  
 The above exploded view is for the purpose of parts disassembly and replacement.  
 The non-numbered parts are not kept as standard service parts.

# 18 Replacement Parts List

<Model: CU-2V14BKP5G>

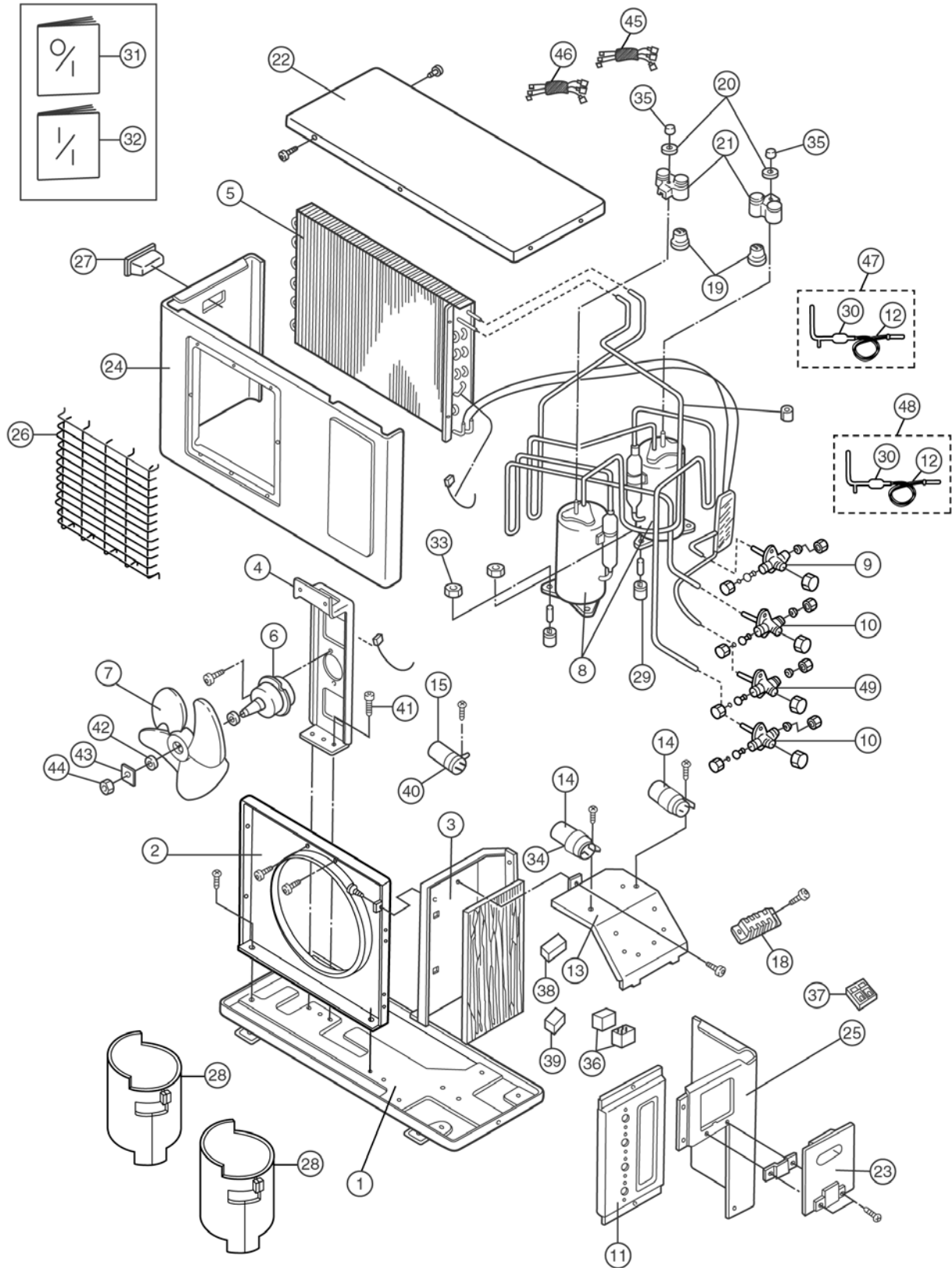
NO.	DESCRIPTION & NAME	Q'TY	CU-2V14BKP5G	REMARKS
1	CHASSY ASS'Y	1	CWD50K573A	
2	SOUND PROOF BOARD	1	CWH15066	
3	FAN MOTOR BRACKET	1	CWD54168	
4	CONDENSER	1	CWB322215	
5	FAN MOTOR	1	CWA951202	0
6	PROPELLER FAN	1	CWH00022	
7	COMPRESSOR	1	GB134PAA	0
8	2-WAY VALVE (LIQUID SIDE)	2	CWB021085	0
9	3-WAY VALVE (GAS SIDE)	2	CWB011107	0
10	HOLDER COUPLING	1	CWH35075A	
11	CAPILLARY TUBE	1	CWB152161	
12	CAPILLARY TUBE	2	CWB152161	
13	2 WAY VALVE	1	CWB021078	
14	V - COIL COMPLETE	1	CWA43C2090	0
15	CONTROL BOARD	1	CWH10967	
16	TRANSFORMER	1	CWA40C192	0
17	ELECTRONIC CONTROLLER	1	CWA741123	0
18	CAPACITOR - COMPRESSOR	1	F0GAH356A001 (400VAC, 35 $\mu$ F)	0
19	CAPACITOR - FAN MOTOR	1	CWA31709 (430VAC, 1 $\mu$ F)	0
20	TERMINAL BOARD	1	CWA28131	
21	OVERLOAD PROTECTOR	1	CWA121057	0
23	TERMINAL COVER - COMPRESSOR	1	CWH171021	
24	CABINET TOP PLATE	1	CWE03061A	
25	CABINET REAR PLATE	1	CWE02071A	
26	CONTROL BOARD COVER	1	CWH13236	
27	CABINET FRONT PLATE	1	CWE06C109A	
28	FAN GUARD	1	CWD04182	
29	HANDLE	1	CWE16000E	
30	SOUND - PROOF MATERIAL	1	CWG302143	
31	ANTI - VIBRATION BUSHING	3	CWH501024	
32	STRAINER	1	CWB11002	
33	OPERATING INSTRUCTION	1	CWF563539	
34	INSTALLATION INSTRUCTION	1	CWF612290	
35	NUT - COMPRESSOR	3	CWH4582065	
36	HOLDER CAPACITOR	1	CWH30060	
37	NUT TERMINAL COVER	1	CWH561020	

(Note)

- All parts are supplied from MAICO, Malaysia (Vendor Code: 061).
- "O" marked parts are recommended to be kept in stock.

# 19 Exploded View

## CU-2V18BK



**Note:**

The above exploded view is for the purpose of parts disassembly and replacement.  
 The non-numbered parts are not kept as standard service parts.

## 20 Replacement Parts List

<Model: CU-2V18BKP5G>

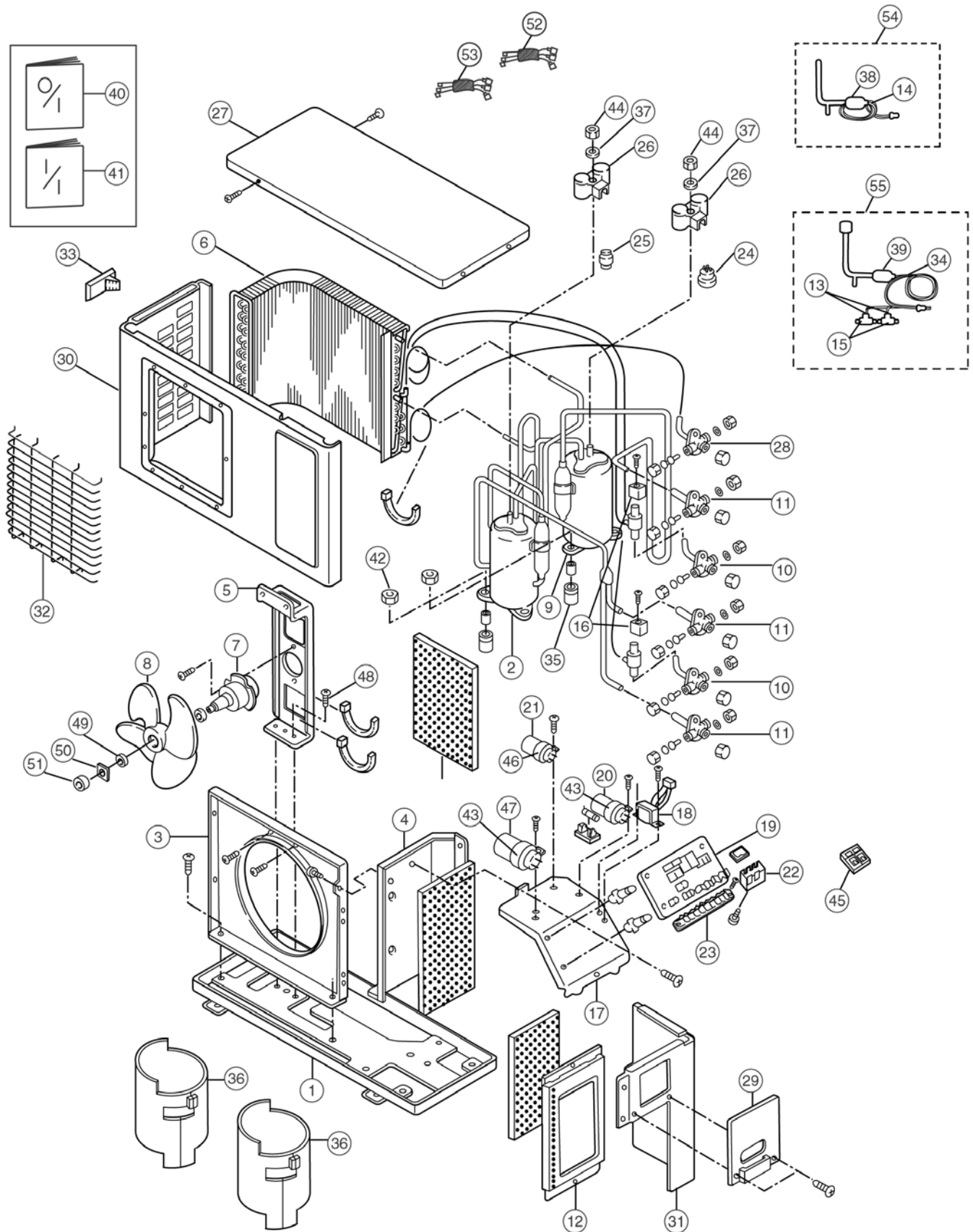
NO.	DESCRIPTION & NAME	Q'TY	CU-2V18BKP5G	REMARKS
1	CHASSY ASS'Y	1	CWD50K663A	
2	AIR GUIDER FOR PROPELLER FAN	1	CWD31094A	
3	SOUND PROOF BOARD	1	CWH15071	
4	FAN MOTOR BRACKET	1	CWD54179	
5	CONDENSER	1	CWB322216	
6	FAN MOTOR	1	CWA951203	0
7	PROPELLER FAN	1	CWH00023	
8	COMPRESSOR	2	GB102PAB	0
9	2-WAY VALVE (LIQUID SIDE) (1/4")	1	CWB021086	0
10	3-WAY VALVE (GAS SIDE) (3/8")	2	CWB011107	0
11	HOLDER COUPLING	1	CWH35083A	
12	CAPILLARY TUBE	2	CWB152181	
13	CONTROL BOARD	1	CWH102151	
14	CAPACITOR - COMPRESSOR	2	DS371306CPNA (370VAC, 30µF)	0
15	CAPACITOR - FAN MOTOR	1	F0GAH305A002 (450VAC, 3µF)	0
18	TERMINAL BOARD	1	CWA281006	0
19	OVERLOAD PROTECTOR	2	CWA121059	0
20	WASHER - TERMINAL COVER	2	CWH571022	
21	TERMINAL COVER - COMPRESSOR	2	CWH171021	
22	CABINET TOP PLATE	1	CWE03C026	
23	CONTROL BOARD COVER	1	CWH13244	
24	CABINET FRONT PLATE	1	CWE06C110A	
25	CABINET SIDE PLATE	1	CWE04069A	
26	FAN GUARD	1	CWD04183	
27	HANDLE	1	CWE16000E	
28	SOUND - PROOF MATERIAL	2	CWG302141	
29	ANTI - VIBRATION BUSHING	6	CWH501024	
30	STRAINER	2	CWB11002	
31	OPERATING INSTRUCTION	1	CWF563539	
32	INSTALLATION INSTRUCTION	1	CWF612290	
33	NUT - COMPRESSOR	6	CWH56000	
34	HOLDER CAPACITOR - COMP.	2	CWH30078	
35	NUT TERMINAL COVER	2	CWH561020	
36	MAGNETIC RELAY	2	CWA4000088	
37	TERMINAL BOARD ASS'Y	1	CWA28K234	
38	TERMINAL BOARD	1	CWA4711012	
39	ELECTRONIC CONTROLLER	1	CWA742811	
40	HOLDER CAPACITOR - FAN	1	CWH301005	
41	SCREW - BRACKET FAN MOTOR	4	CWH55027	
42	WASHER - PROPELLER FAN	1	CWH57066	
43	WASHER - PROPELLER FAN	1	CWH57067	
44	NUT - PROPELLER FAN	1	CWH56033	
45	LEAD WIRE COMPLETE - COMPRESSOR	1	CWA67C4205	
46	LEAD WIRE COMPLETE - COMPRESSOR	1	CWA67C4206	
47	TUBE ASS'Y (STRAINER, CAP.)	1	CWT01C2480	
48	TUBE ASS'Y (STRAINER, CAP.)	1	CWT01C2481	
49	2-WAY VALVE (LIQUID SIDE)	1	CWB021087	0

(Note)

- All parts are supplied from MAICO, Malaysia (Vendor Code: 061).
- "O" marked parts are recommended to be kept in stock.

# 21 Exploded View

## CU-3V20BK



**Note:**

The above exploded view is for the purpose of parts disassembly and replacement.  
 The non-numbered parts are not kept as standard service parts.

## 22 Replacement Parts List

<Model: CU-3V20BKP5G>

NO.	DESCRIPTION & NAME	Q'TY	CU-3V20BKP5G	REMARKS
1	CHASSY ASS'Y	1	CWD50K663A	
2	COMPRESSOR	1	GB134PAB	0
3	AIR GUIDER	1	CWD31094A	
4	SOUND PROOF BOARD	1	CWH15071	
5	FAN MOTOR BRACKET	1	CWD54179	
6	CONDENSER	1	CWB322217	
7	FAN MOTOR	1	CWA951203	
8	PROPELLER FAN	1	CWH00023	
9	COMPRESSOR	1	GB102PAB	
10	2-WAY VALVE (LIQUID SIDE) (1/4")	2	CWB021088	0
11	3-WAY VALVE (GAS SIDE) (3/8")	3	CWB011107	0
12	HOLDER COUPLING	1	CWH35127A	
13	CAPILLARY TUBE	2	CWB152164	
14	CAPILLARY TUBE	1	CWB152162	
15	2-WAY VALVE	2	CWB021080	
16	V - COIL COMPLETE	1	CWA43C2091	0
17	CONTROL BOARD	1	CWH102151	0
18	TRANSFORMER	1	CWA40C192	0
19	ELECTRONIC CONTROLLER	1	CWA741165	0
20	CAPACITOR - COMPRESSOR	1	DS371356CPNA (35µF, 370VAC)	0
21	CAPACITOR - FAN MOTOR	1	F0GAH305A002 (3.0µF, 450VAC)	0
22	TERMINAL BOARD	1	CWA4711012	
23	TERMINAL BOARD	1	CWA28064	
24	OVERLOAD PROTECTOR	1	CWA121057	0
25	OVERLOAD PROTECTOR	1	CWA121059	0
26	TERMINAL COVER - COMPRESSOR	2	CWH171021	
27	CABINET TOP PLATE	1	CWE03C026	
28	2-WAY VALVE (LIQUID SIDE)	1	CWB021085	0
29	CONTROL BOARD COVER	1	CWH13322	
30	CABINET FRONT PANEL	1	CWE06C111A	
31	CABINET SIDE PLATE	1	CWE04131A	
32	FAN GUARD	1	CWD04183	
33	HANDLE	1	CWE16037C	
34	CAPILLARY TUBE	1	CWB152163	
35	ANTI - VIBRATION BUSHING	6	CWH501024	
36	SOUND PROOF MATERIAL	2	CWG302141	
37	WASHER - TERMINAL COVER	2	CWH571022	
38	STRAINER	1	CWB11002	
39	STRAINER	1	CWB11004	
40	OPERATING INSTRUCTION	1	CWF563539	
41	INSTALLATION INSTRUCTION	1	CWF612290	
42	NUT - COMPRESSOR	6	CWH56000	
43	HOLDER CAPACITOR	2	CWH30078	
44	NUT - TERMINAL COVER	2	CWH561020	
45	TERMINAL BOARD ASS'Y	1	CWA28K234	
46	HOLDER CAPACITOR - FAN	1	CWH301005	
47	CAPACITOR - COMPRESSOR	1	DS371306CPNA (30µF, 370VAC)	0
48	SCREW - BRACKET FAN MOTOR	4	CWH55027	
49	WASHER - PROPELLER FAN	1	CWH57066	
50	WASHER - PROPELLER FAN	1	CWH57067	
51	NUT - PROPELLER FAN	1	CWH56033	
52	LEAD WIRE COMPLETE - COMPRESSOR	1	CWA67C4209	
53	LEAD WIRE COMPLETE - COMPRESSOR	1	CWA67C4205	
54	TUBE ASS'Y (STRAINER, CAP.)	1	CWT01C2485	
55	TUBE ASS'Y (STRAINER, CAP.)	1	CWT01C2486	

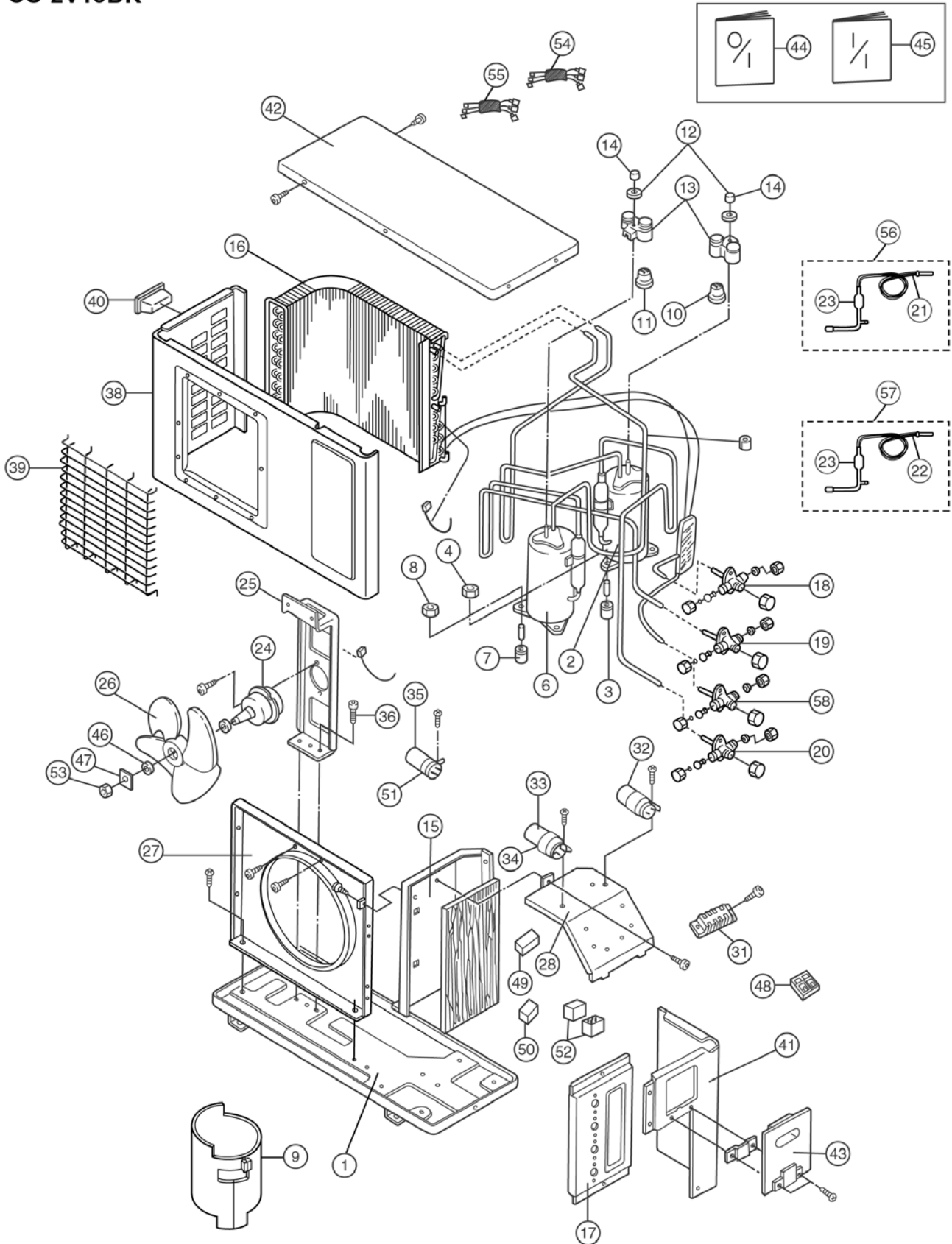
(Note)

- All parts are supplied from MAICO, Malaysia (Vendor Code: 061).
- "O" marked parts are recommended to be kept in stock.



# 23 Exploded View

## CU-2V19BK



**Note:**

The above exploded view is for the purpose of parts disassembly and replacement.  
 The non-numbered parts are not kept as standard service parts.

## 24 Replacement Parts List

<Model: CU-2V19BK>

NO.	DESCRIPTION & NAME	Q'TY	CU-2V19BKP5G	REMARKS
1	BASE ASS'Y	1	CWD50K2063A	
2	COMPRESSOR A	1	GB134PAB	0
3	MOUNT RUBBER	3	CWH501024	
4	NUT	3	CWH4582065	
6	COMPRESSOR B	1	GB080PAB	0
7	MOUNT RUBBER	3	CWH501024	
8	NUT	3	CWH56000	
9	SOUND PROOF MATERIAL	1	CWG302142	
10	OVERLOAD PROTECTOR A	1	CWA121057	0
11	OVERLOAD PROTECTOR B	1	CWA121058	0
12	WASHER - TERMINAL COVER	2	CWH571022	
13	TERMINAL COVER - COMP.	2	CWH171021	
14	NUT TERMINAL COVER	2	CWH561020	
15	SOUND PROOF PLATE	1	CWH15071	
16	CONDENSER	1	CWB322217	
17	COUPLING BRACKET	1	CWH35083A	
18	2-WAY VALVE (LIQUID SIDE) (1/4")	1	CWB021086	0
19	3-WAY VALVE (GAS SIDE) (3/8")	1	CWB011107	0
20	3-WAY VALVE (GAS SIDE) (1/2")	1	CWB011108	0
21	CAPILLARY TUBE	1	CWB152182	
22	CAPILLARY TUBE	1	CWB15303	
23	STRAINER	2	CWB11002	
24	FAN MOTOR	1	CWA951203	0
25	FAN MOTOR BRACKET	1	CWD54179	
26	PROPELLER FAN	1	CWH00023	
27	AIR GUIDER - P. FAN	1	CWD31094A	
28	CONTROL BOARD	1	CWH102151	
31	TERMINAL BOARD	1	CWA281006	
32	CAPACITOR - COMP. A (35 $\mu$ F, 370VAC)	1	DS371356CPNA	0
33	CAPACITOR - COMP. B (25 $\mu$ F, 370VAC)	1	CWA312075	0
34	HOLDER CAPACITOR	2	CWH30078	
35	CAPACITOR - FAN MOTOR (3.0 $\mu$ F, 450VAC)	1	FOGAH305A002	0
36	SCREW - BRACKET FAN MOTOR	4	CWH55027	0
38	CABINET FRONT PLATE	1	CWE06C111A	
39	FAN GUARD	1	CWD04183	
40	HANDLE	1	CWE16037C	
41	CABINET SIDE PLATE	1	CWE04069A	
42	CABINET TOP PLATE	1	CWE03C026	
43	CONTROL BOARD COVER	1	CWH13244	
44	OPERATING INSTRUCTION	1	CWF563539	
45	INSTALLATION INSTRUCTION	1	CWF612290	
46	WASHER - PROPELLER FAN	1	CWH57066	
47	WASHER - PROPELLER FAN	1	CWH57067	
48	TERMINAL BOARD ASS'Y	1	CWA28K234	
49	TERMINAL BOARD	1	CWA4711012	
50	ELECTRONIC CONTROLLER	1	CWA742811	
51	HOLDER CAPACITOR - FAN	1	CWH301005	
52	MAGNETIC RELAY	2	CWA4000088	
53	NUT - PROPELLER FAN	1	CWH56033	
54	LEAD WIRE COMPLETE - COMPRESSOR	1	CWA67C4205	
55	LEAD WIRE COMPLETE - COMPRESSOR	1	CWA67C4208	
56	TUBE ASS'Y (STRAINER, CAP.)	1	CWT01C2482	
57	TUBE ASS'Y (STRAINER, CAP.)	1	CWT01C2483	
58	2-WAY VALVE (LIQUID SIDE) (1/4")	1	CWB021087	0

(Note)

- All parts are supplied from MAICO, Malaysia (Vendor Code: 061).
- "O" marked parts are recommended to be kept in stock.