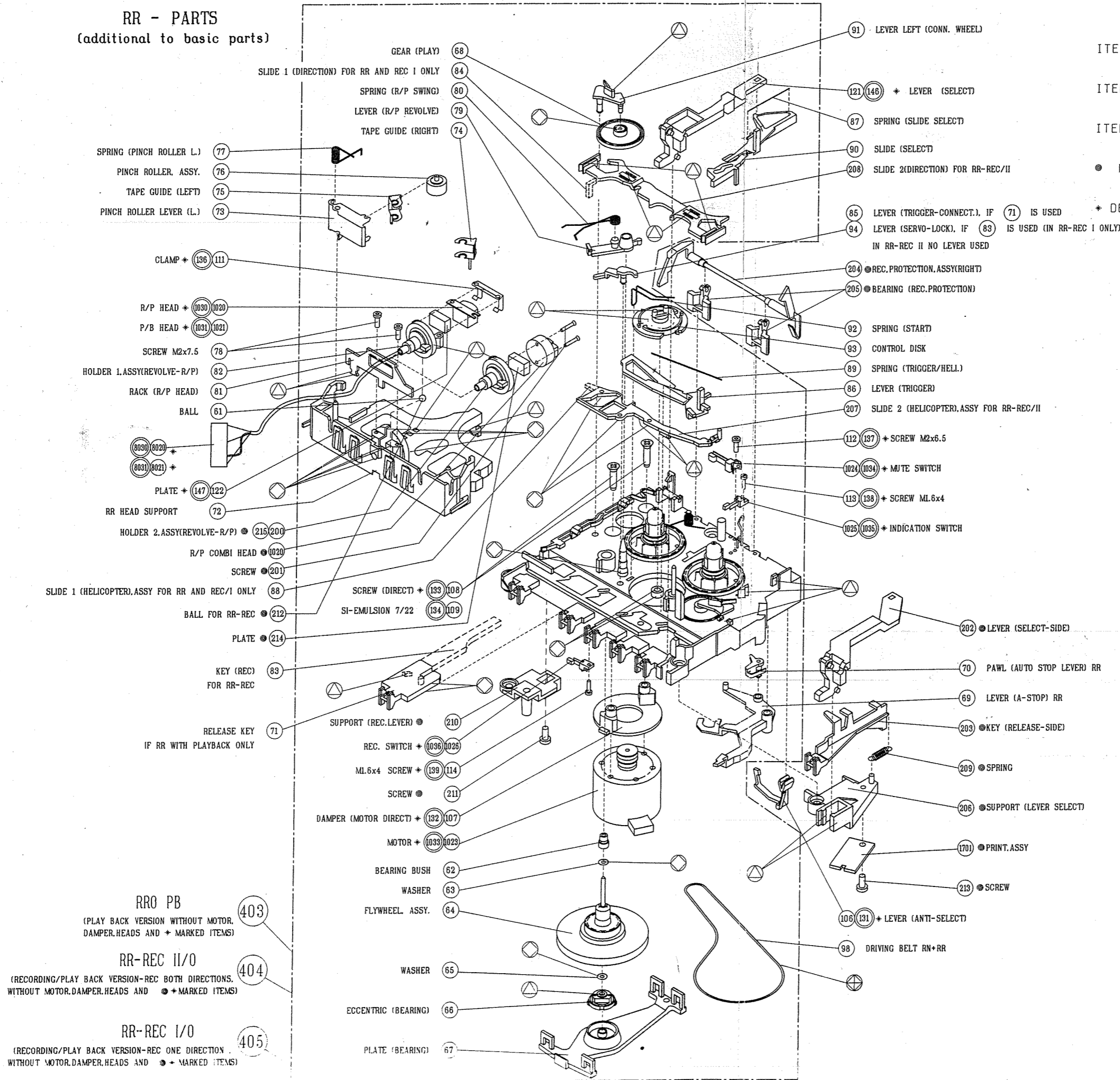


RR - PARTS
(additional to basic parts)



EXPLANATIONS FOR VERSIONS:

ITEM (100) TO (124) ON "DECK A"

ITEM (125) TO (149) ON "DECK B"

ITEM (200) TO (215) ONLY USED IN REC. VERSION

● NOT IN RR-REC I/O AND RR-REC II/O

* DEPENDENT ON VERSION, THEREFORE NOT IN RR 0 PB AND RR-REC I/O AND RR-REC II/O

| | | |
|-----|----------------|-------------------------|
| 67 | 4822 520 10718 | plate bearing |
| 73 | 4822 402 10038 | lever pinch roller left |
| 74 | 4822 535 92992 | tape guide right |
| 75 | 4822 535 92993 | tape guide left |
| 76 | 4822 528 70646 | pinch roller |
| 106 | 4822 403 70385 | lever |
| 111 | 4822 492 70393 | spring head clamping |
| 403 | 4822 691 10294 | RR0 PB assy |
| 404 | 4822 691 20665 | RR REC II/O assy |
| 405 | 4822 691 10295 | RR REC I/O assy |

Only those parts of which a service code number is stated are service parts.

- ⊙ LUBRICANT (MOBIL SHC 634) Item No. 48
- ⊙ GREASE (SHELL ALVANIA RS) Item No. 49
- ⊙ HANNOSIL-RELEASE AGENT M Item No. 50

FOR SERVICE NO LUBRICATION IS NECESSARY EXCEPT PART WILL BE RENEWED

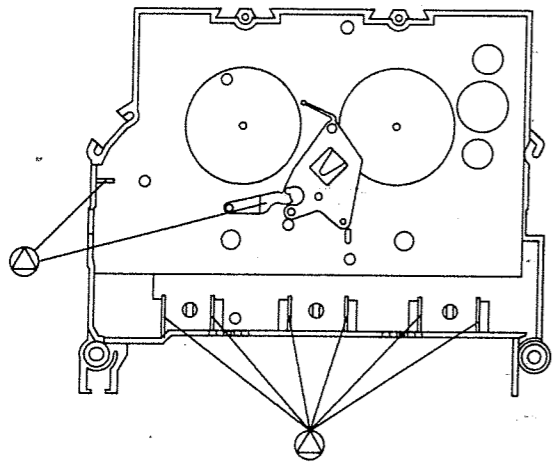
RRO PB
(PLAY BACK VERSION WITHOUT MOTOR, DAMPER, HEADS AND * MARKED ITEMS) (403)

RR-REC II/O
(RECORDING/PLAY BACK VERSION-REC BOTH DIRECTIONS, WITHOUT MOTOR, DAMPER, HEADS AND * MARKED ITEMS) (404)

RR-REC I/O
(RECORDING/PLAY BACK VERSION-REC ONE DIRECTION, WITHOUT MOTOR, DAMPER, HEADS AND * MARKED ITEMS) (405)

**BASIC PARTS
RN/RR-TAPE DECK**

BOTTOM VIEW OF CHASSIS WINDPLATE



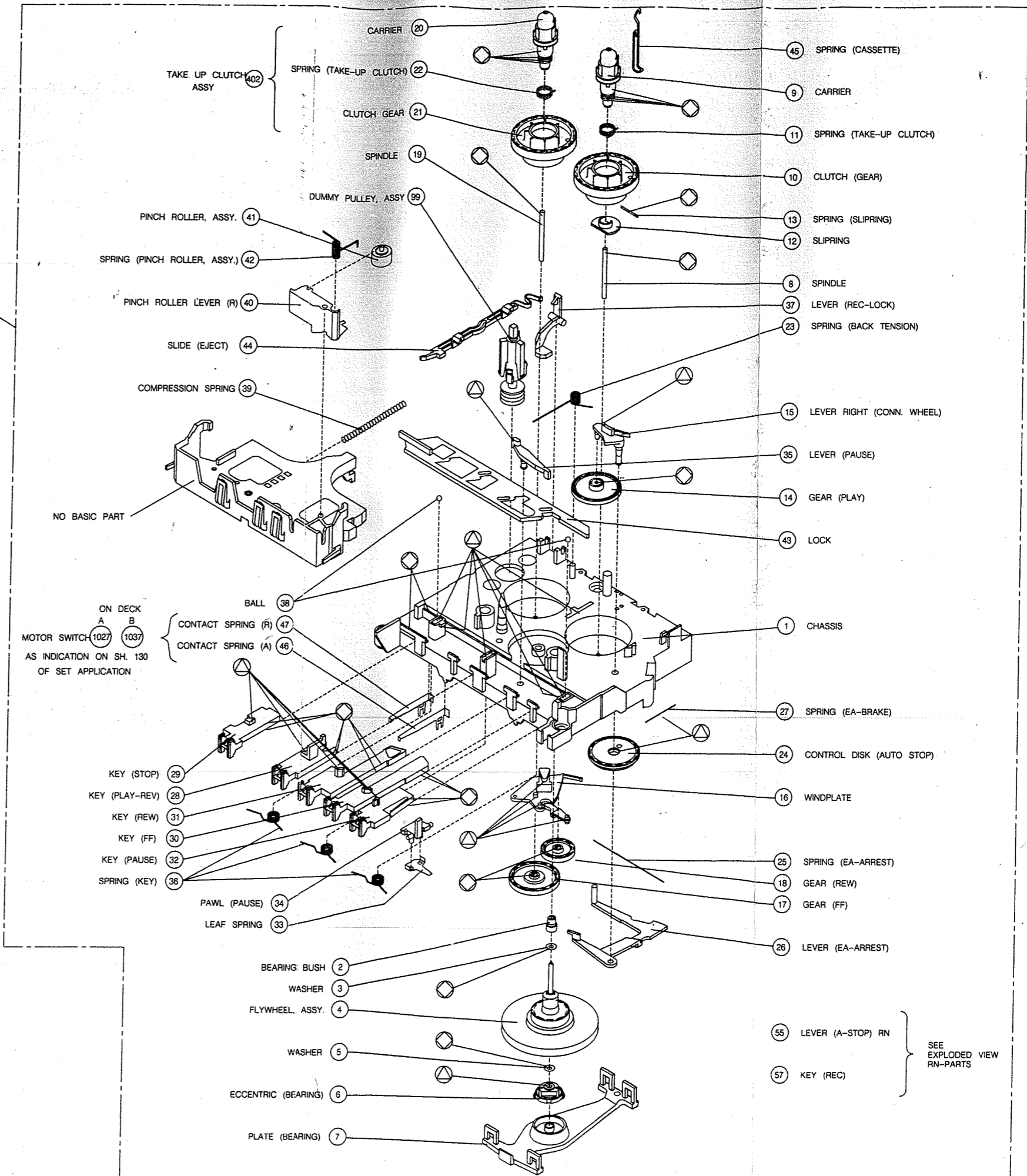
- ⊗ LUBRICANT (MOBIL SHC 634) term No. 48
- ⊕ GREASE (SHELL ALVANIA RS) term No. 49
- ⊙ HANNOSIL-RELEASE AGENT M term No. 50

FOR SERVICE NO LUBRICATION IS NECESSARY EXCEPT PART WILL BE RENEWED

| | | |
|-----|----------------|-------------------------|
| 7 | 4822 520 10718 | plate bearing |
| 40 | 4822 402 10037 | lever pinchroller right |
| 41 | 4822 528 70646 | pinch roller |
| 43 | 4822 404 10853 | slide, key locking |
| 401 | 4822 691 10296 | RN 0 assy |
| 402 | 4822 528 20676 | take up clutch assy |

Only those parts of which a service code number is stated are service parts.

RN0 401



SEE EXPLODED VIEW RN-PARTS