



Philips Domestic Appliances and Personal Care

Service Manual

PRODUCT INFORMATION

Shaving system

- 3-dimensional contour following system
- Super Lift & Cut system
- Used shaving lotion
- Waterproof

Power system

- Rechargeable
- 8 hour charge time
- Up to 45 minutes cordless shaving time
- World-wide automatic voltage selection

Features

- Travel pouch
- Cartridge holder
- Trimmer

Luxe

Safety information

- This product meets the requirements regarding interference suppression on radio and TV.
- After the product has been repaired, it should function properly and has to meet the safety requirements as officially laid down at this moment.

TECHNICAL INFORMATION

- Voltage : 100-240 V AC 50-60 Hz
- Power consumption : Motor depending
- Motor Voltage : 1,2 V
- Power system : rechargeable
- Shaving heads : HQ177 - 4222 036 09810
- Charging indication : duo LED yello/green
- SAP coding : HQ7740

DISASSEMBLY- AND RE-ASSEMBLY ADVISE

- Remove the shaving unit to prevent damage during repair.
- Remove the outer cover (item 19) and cartridge (item 20).
- Remove 5 A1 screws.

REPAIR INSTRUCTION

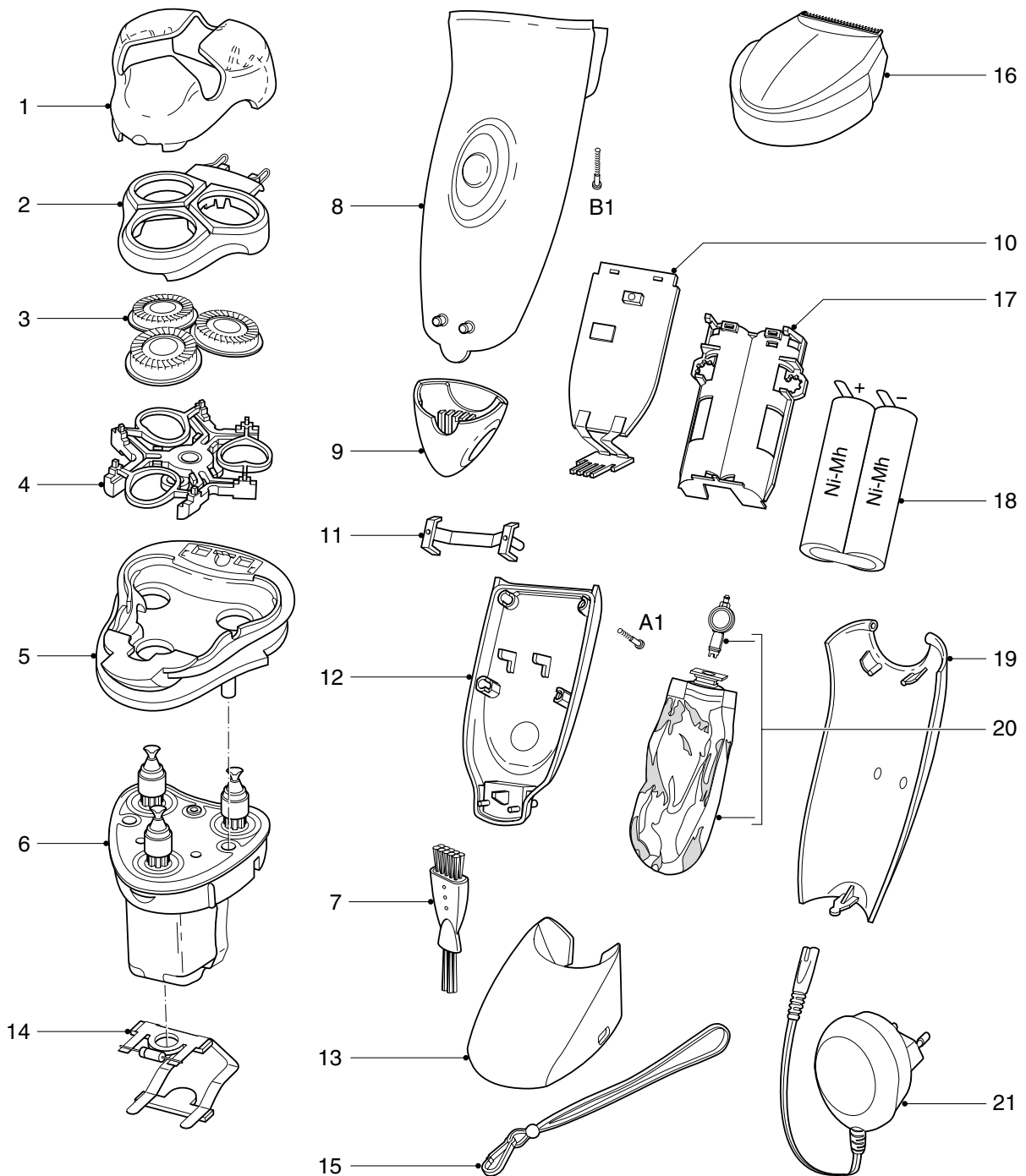
- After the cover (item 12) has been removed, it must be checked if its sealing has not been damaged.
- The cover (item 12) contains a sticker that is permeable to gas yet impermeable to water. This sticker may not be removed under any circumstances.
- Unsolder the motor connector and remove the PCB.
- To replace the motor or the driving unit (parts of item 6), screws B1 must be removed first. Then push the entire unit out of the housing (item 8) and check if its sealing is damaged.
- The entire driving unit is supplied as a single part to guarantee optimal sealing of the gear shafts.
- A replacement of the pump button is only possible after removal of the hair chamber (item 5).
- To guarantee that the shaver is completely watertight, only the original screws may be used.
- To charge the shaver only the original power plug may be used.

OPTIONAL (accessories)

- Travel pouch

PARTS LIST & EXPLODED VIEW

HQ7740



Pos	Service code	Description
1	4222 036 09790	Protecting cap Neptunus
2	4222 036 09800	Bracket assy
3	4222 036 09810	Shaving head (HQ177)
4	4222 036 09820	Holder assy
5	4222 036 09830	Hair chamber
6	4222 036 09840	Driving unit
7	4222 036 09850	Cleaning brush
8	4222 036 10100	Housing
9	4222 036 09880	Tail part
10	4222 036 10050	Power supplier
11	4822 256 10454	Bridge
12	4222 036 10060	Cover assy
13	4222 036 10000	Stand
14	4222 036 09930	Conneting strip assy
15	4222 036 10010	Hanging cord

Pos	Service code	Description
16	4222 036 10070	Trimmer
17	4222 036 09960	Battery holder
18	4822 138 10728	NiMh pack AA
19	4222 036 09970	Outer cover
20	4222 036 09980	Shaving gel
21	4222 036 10620	HQ170 5 pack sensitive
	4222 036 10630	HQ171 5 pack fresh gel
	4222 036 04080	Power plug EUR
	4222 036 04090	Power plug GBR
	4222 036 04850	Power plug KOR
A	4222 036 05110	Power plug CAN
	4222 036 05120	Power plug AUS
	4822 502 14544	Screw
B	4822 502 14545	Screw
	4222 036 10020	Pouch