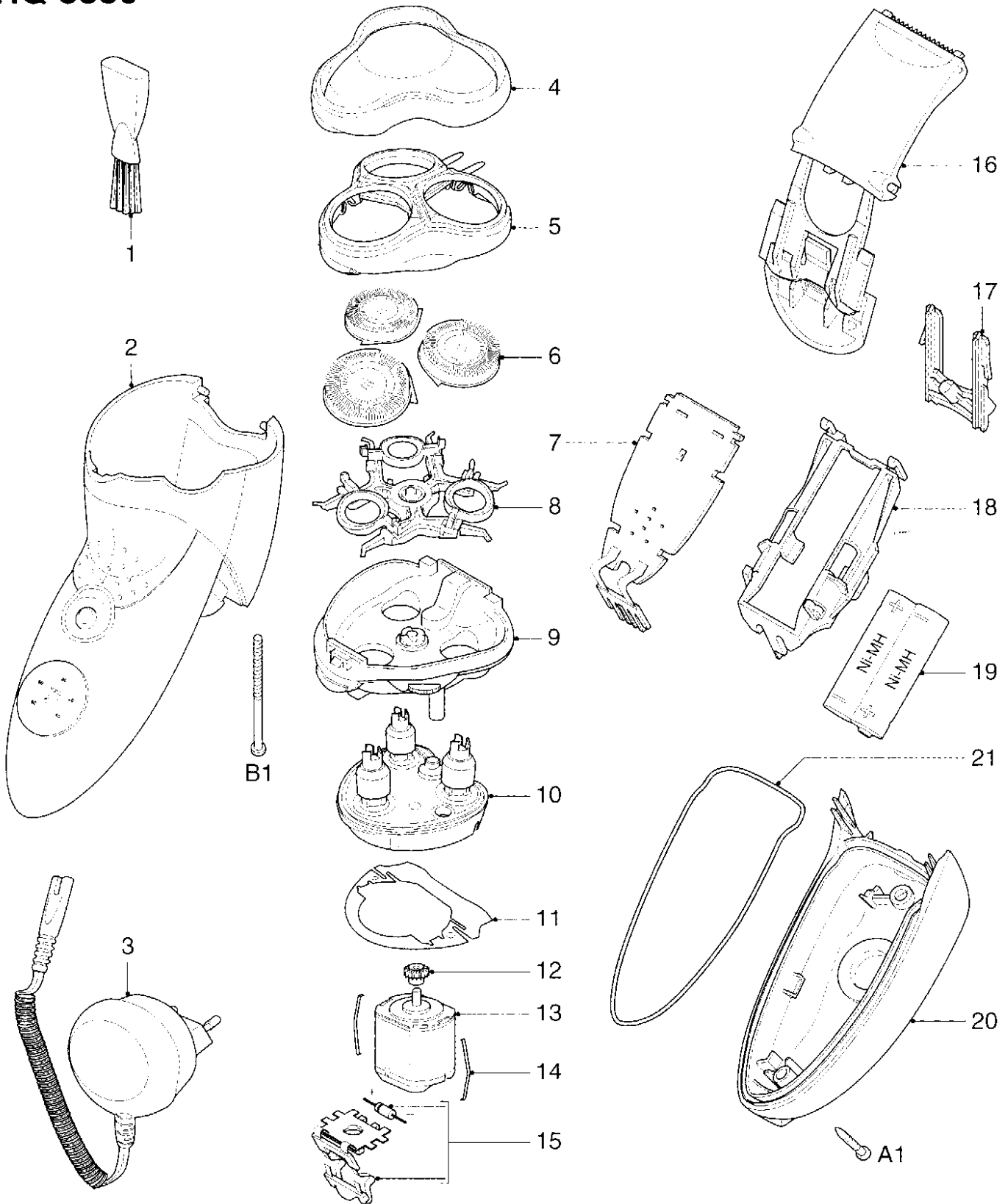


HQ 8880



- | | | | | | |
|----|----------------|-------------------|----|----------------|-----------------------|
| 1 | 4222 036 05770 | cleaning brush | 13 | 4822 361 21783 | motor |
| 2 | 4222 036 06230 | housing | 14 | 4822 492 71735 | motor spring |
| 3 | 4822 219 10711 | power plug | 15 | 4222 036 06000 | connecting strip assy |
| 4 | 4222 036 05800 | protecting cap | 16 | 4222 036 05870 | trimmer assy |
| 5 | 4222 036 05810 | bracket | 17 | 4222 036 05880 | bracket large |
| 6 | 4222 036 05820 | HQ8 shaving heads | 18 | 4222 036 06140 | spacer AA |
| 7 | 4222 036 06250 | PCB | 19 | 4822 138 10728 | 2-AA pack NiMH |
| 8 | 4222 036 05840 | holder assy | 20 | 4222 036 06210 | cover |
| 9 | 4222 036 05850 | hair chamber | 21 | 4222 036 05910 | rubber seal |
| 10 | 4222 036 05410 | driving unit | | | |
| 11 | 4822 466 12233 | dust seal | A | 4222 036 05920 | screw J1-6 |
| 12 | 4822 522 10763 | pinion | B | 4222 036 05930 | screw 1ADU |
| | | | | 4222 036 06220 | pouch |