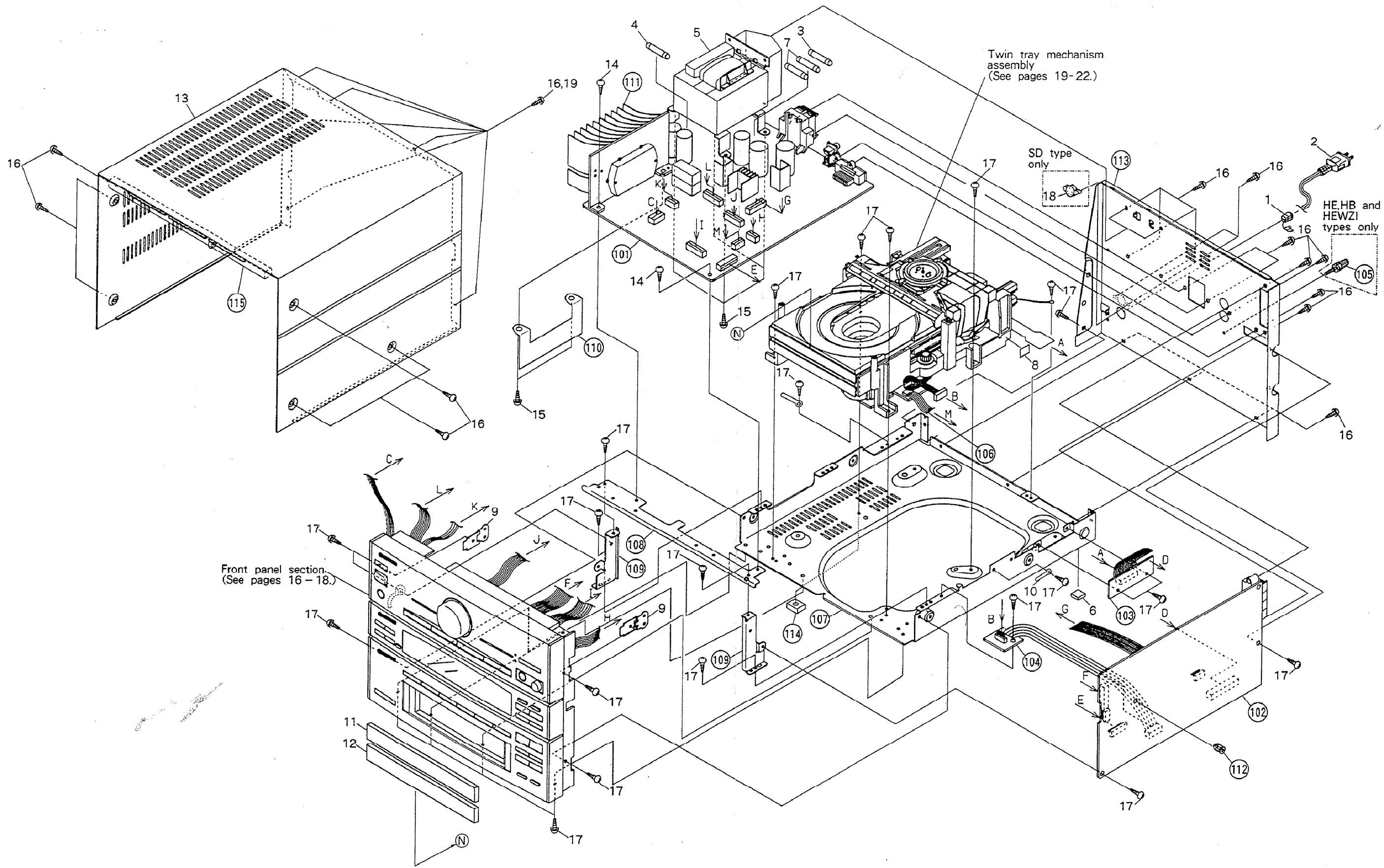


2.2 XC-P410T

2.2.1 Exterior

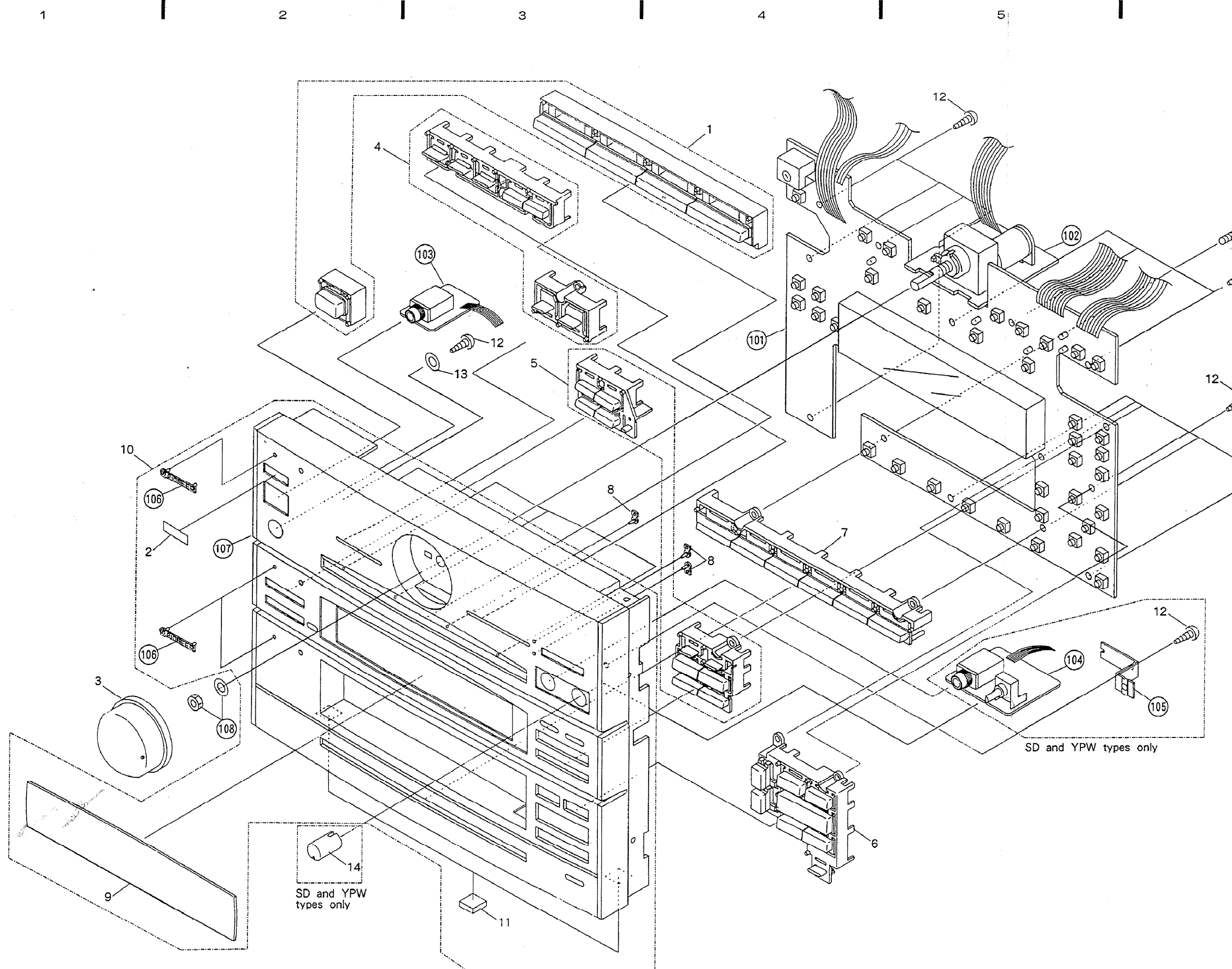


Front panel section.
(See pages 16-18.)

Twin tray mechanism
assembly
(See pages 19-22.)

SD type
only

HE, HB and
HEWZI
types only



106

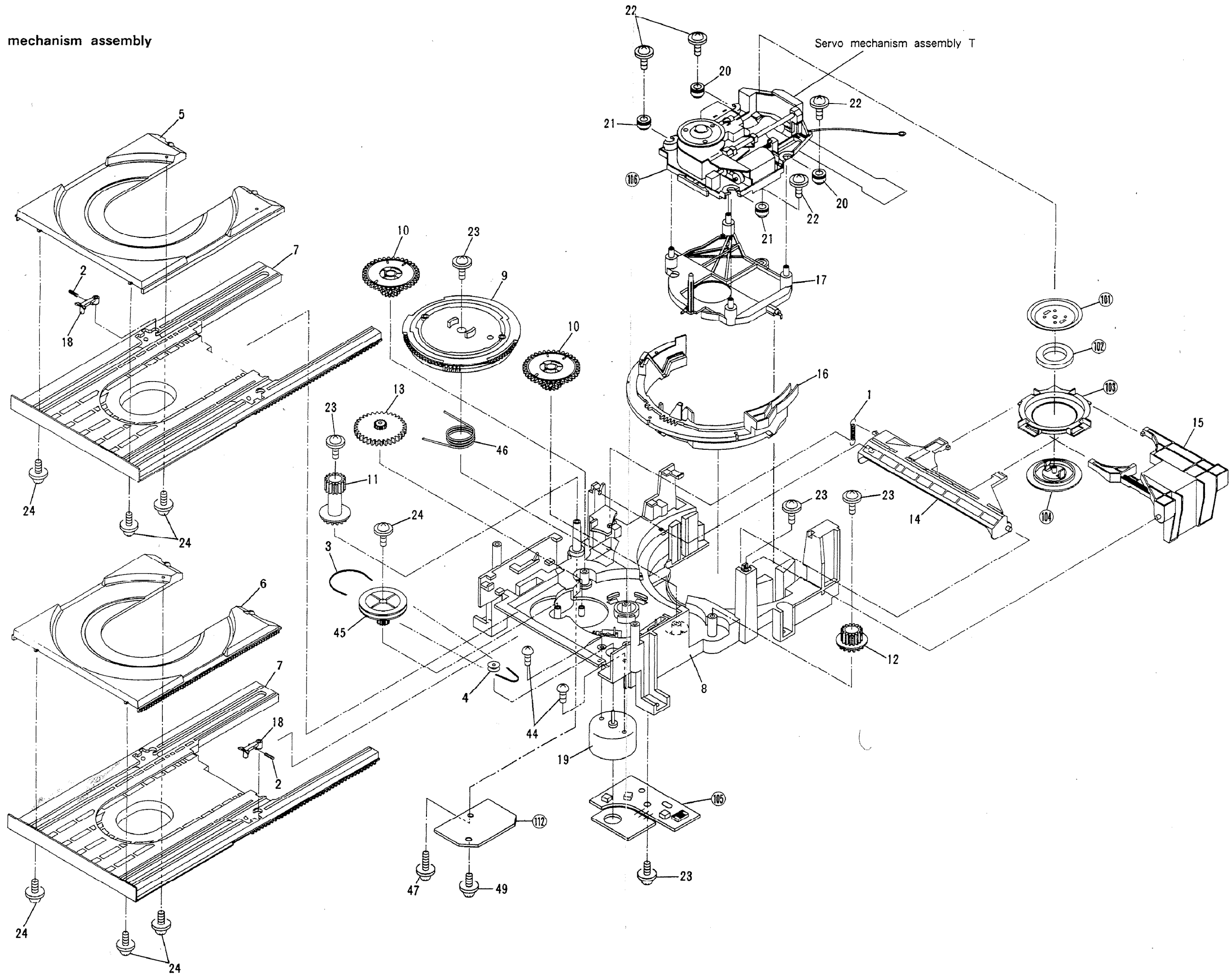
107

SD and YPW types only

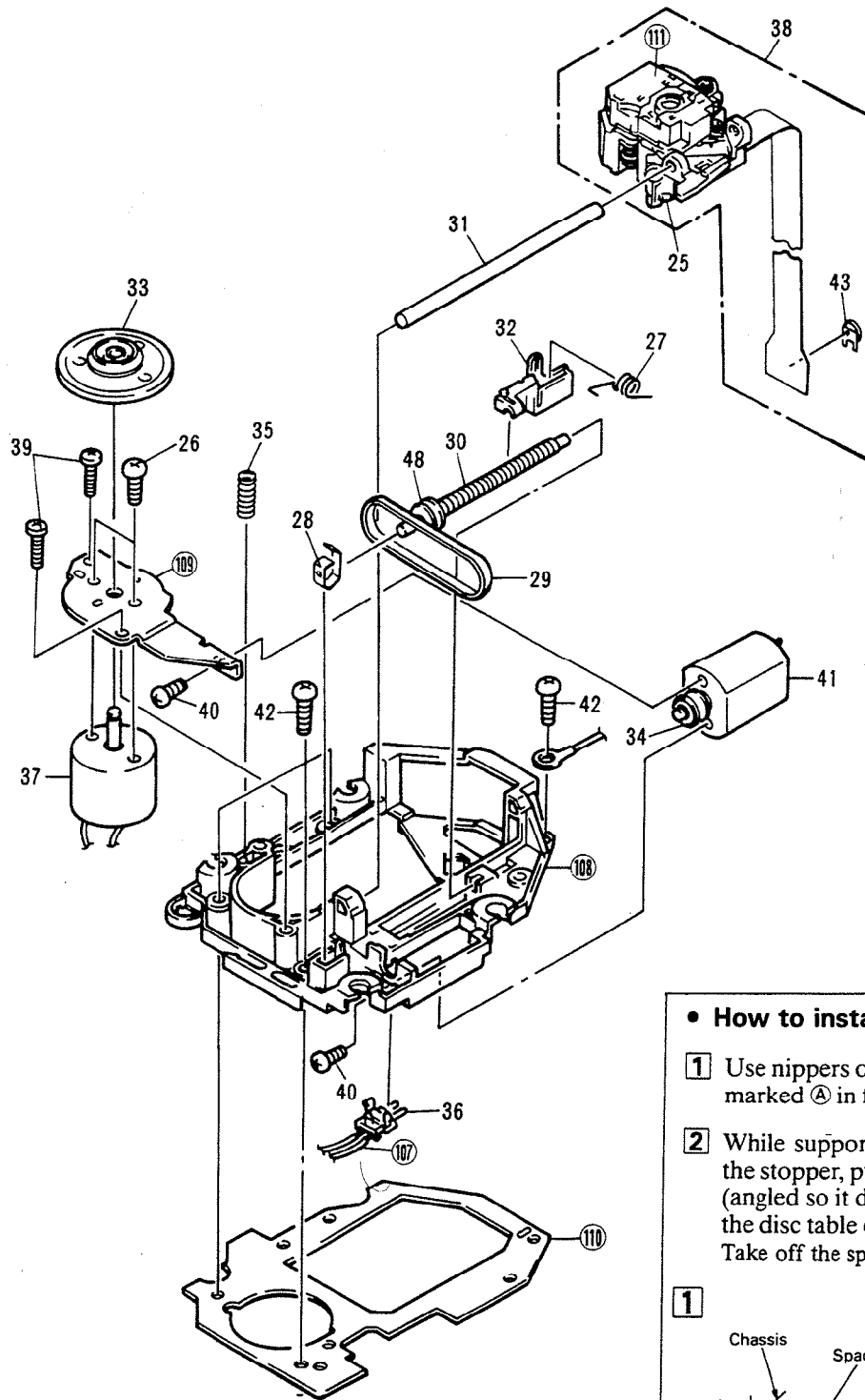
14

SD and YPW types only

2.2.3 Twin-tray mechanism assembly



• Servo mechanism assembly T



• How to install the disc table

- 1 Use nippers or other tool to cut the two sections marked ① in figure 1. Then remove the spacer.
- 2 While supporting the spindle motor shaft with the stopper, put spacer on top of the motor base (angled so it doesn't touch section ②), and stick the disc table on top (takes about 9kg pressure). Take off the spacer.

