

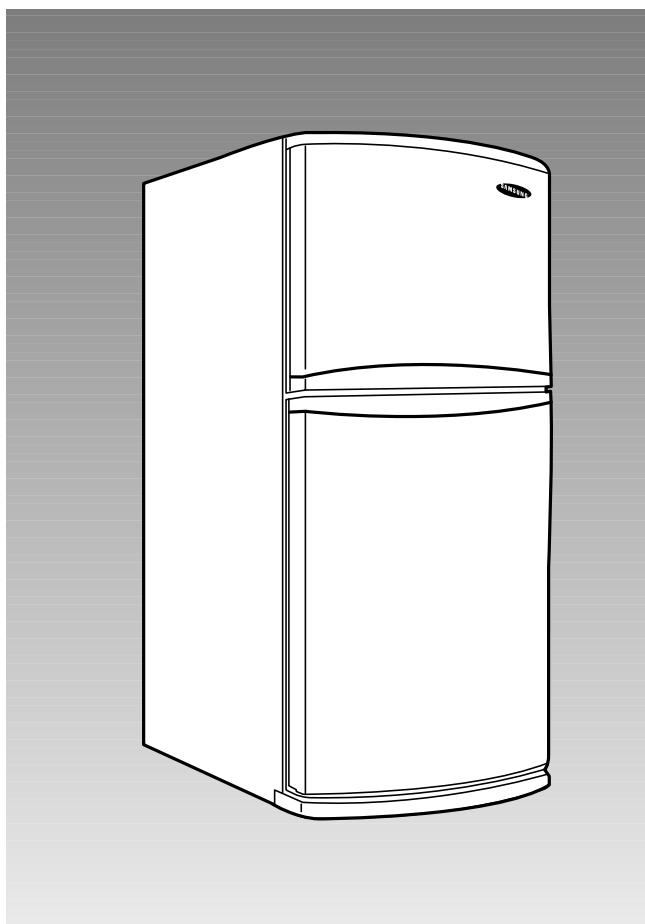
SAMSUNG

**Model: SR-21NME/21WME
SR-24NME/24WME**



***SERVICE* Manual**

REFRIGERATOR



CONTENTS

1. Safety precautions and warnings
2. Product specifications
3. Electrical part specifications & standard
4. Product dimension
5. Identifying and disassembling the parts
6. Schematic diagram of coolant gas circulation
7. Circuit diagram
8. Packing dimension
9. Schematic diagram of cold air flow
10. Troubleshooting method
11. Exploded view & part list

1.Safety precautions and warnings

Read all instructions before using this appliance in risk of accident order to avoid or property damage.

Warning/Caution

Description of symbols



Warning

This symbol is intended to alert the user to the possible death or injury.



Caution

This symbol is intended to alert the user to the possible injury or damage



Indicates prohibition



Do not disassemble



Do not contact



Adhere to the instruction strictly



Unplug from the electrical outlet



Earth the appliance to avoid the risk of an electric shock



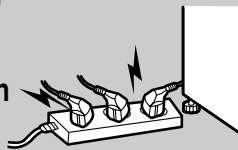
Warning

Do not plug multiple electrical appliances into the same outlet.

- This may cause abnormal heating or fire hazard.



Prohibition

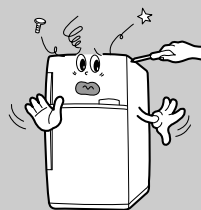


Do not attempt to make repairs yourself

- This could lead to fire hazard or abnormal operation causing severe personal injury.

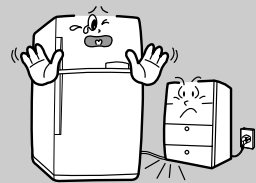


Do not disassemble



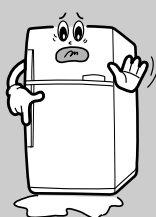
Make sure the power cord is not crushed or damaged.

- Repair immediately all power cords or outlets that have become frayed or otherwise damaged.



Check the operating environment.

- Do not install the refrigerator in a humid (with condensation) location or on an unstable surface.

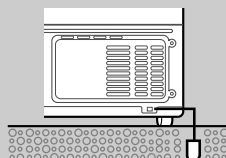


Do not attempt to make repairs yourself.

- This could lead to fire hazard or abnormal operation causing severe personal injury.

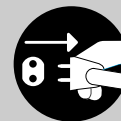


Earth

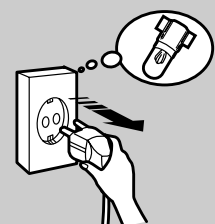


Make sure the power cord is not crushed or damaged.

- Repair immediately all power cords or outlets that have become frayed or otherwise damaged.



Unplug





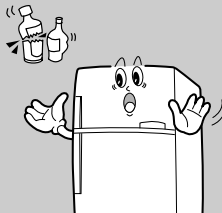
Caution

Do not store bottled food or drinks in the freezing compartment.

- Bottles may explode causing personal injury.



Prohibition



Do not store food in an unstable manner.

- Opening the door may trigger loose items to slip and cause injury.



Prohibition



Do not store anything other than food in the refrigerator.

- Medical supplies which need to be under strict not be stored in the refrigerator.



Prohibition



Do not put anything on top of the refrigerator.

- Opening or closing the door may trigger loose items to slip and cause injury.

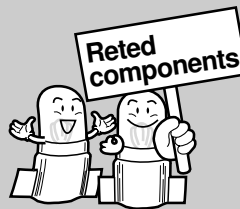


Prohibition



When replacing electric components, be sure to use rates components.

- Check the model, rated voltage, rated current, operating temperature etc. of the component.



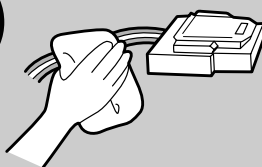
When servicing the refrigerator, completely remove dust or foreign substances from the housing, electric connections and etc.

- This can proect against the risk of fire hazard caused by tracking and short circuit.



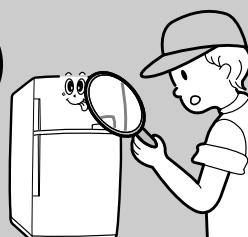
When servicing the refrigerator, completely remove dust or foreign substances from the housing, electric connections and etc.

- This can protect against the risk of fire hazard caused by tracking and short circuit.



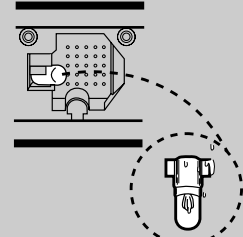
After serving the refrigerator, be sure to check the components are reassembled in a correct manner.

- The serviced unit should be reassembled and returned to its original assembly state.



Check the electrical parts for the trace of moisture penetration.

- When the trace of moisture penetration is detected, replace the part or dry insulation tapping.



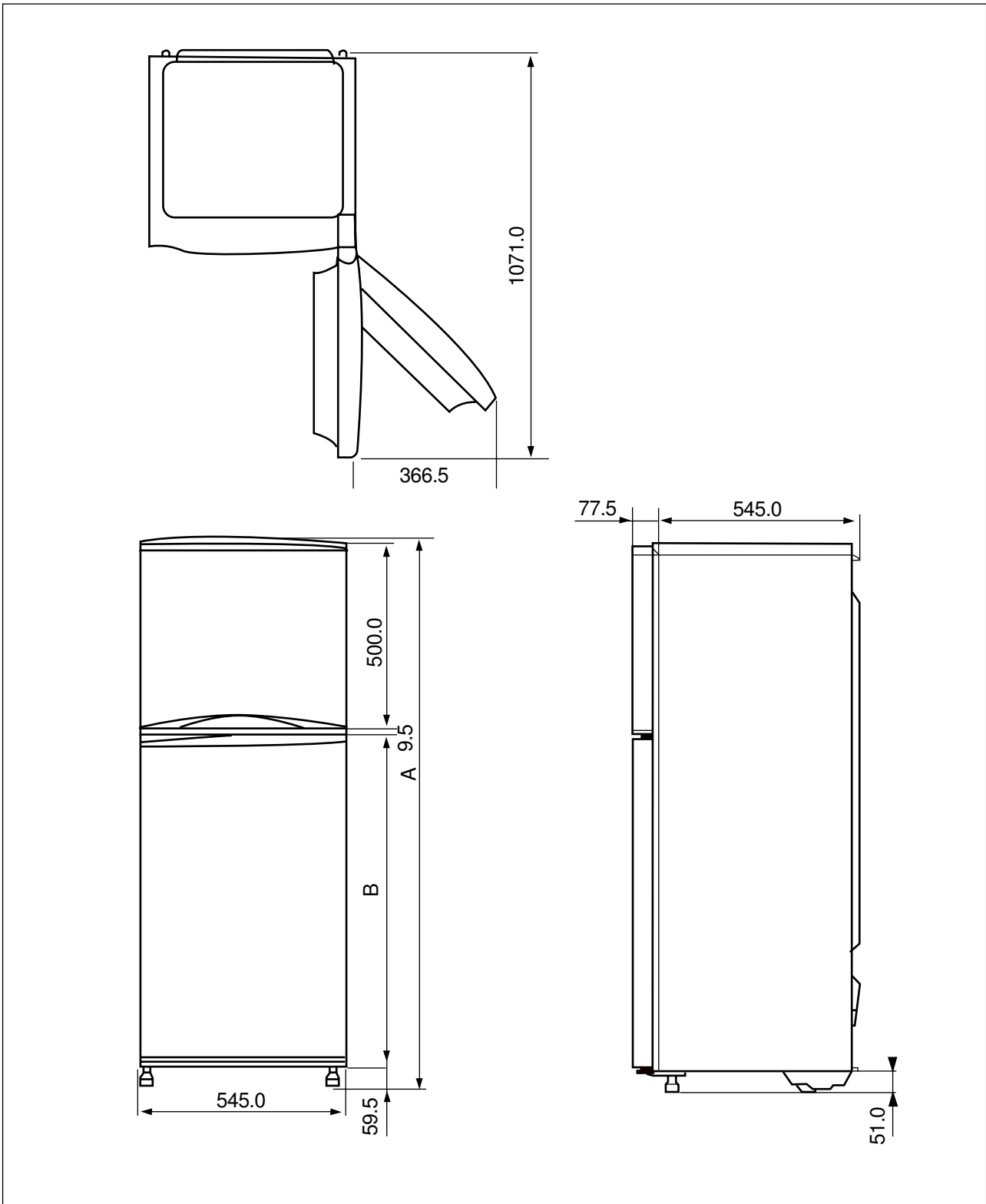
2.Product Specifications

ITEM		STANDARD	
Model name		SR-21NME/24WME	SR-24NME,24WME
Type		2-Door Freezer/Refrigerator	
Power source		AC 115V/60HZ, 127V/60Hz 220V/50~60Hz, 230~240V/50Hz	
Net capacity (it/cu.ft)	Freezer	52(1.8)	52(1.8)
	Refrigerator	133(4.7)	133(4.7)
	Total	182(6.5)	182(6.5)
Net dimension (mm)	Width	545	
	Depth	589	
	Height	1453	1553
Net weight (kg)			
Refrigerant		D-134a(130gr)	
Temperature control		Dial(Thermostat)	
Defrosting		Automatic(Start-Finish by Timer)	
Foam insulation	Cabinet	R-141b	
	Door	R-141b	
Liner / Door panel		ABS	
Accessory parts	Door storage	2 Guard-freezer 1 Guard-egg 1 Guard-variety 2 Guard-bottle	2 Guard-freezer 1 Guard-egg 1 Guard-variety 2 Guard-bottle
	inside storage	1 Base-tray ice(H) 1 Case-tray ice, assy(H) 1 Tray-ice cube 1 Shelf0freezer, sub(H) 1 Cover-vegetable 1 Tray-vegetable	2 Shelf-refrigerator(H) 1 Tray-chilled room(H) 1 Cover-chilled room(H) 1 Shelf-freezer wire(L) 1 Tray-ice,b(L) 1 Shelf-ref wire(L)
	interior Lamp(H/M)	1(Refrigerator)	
	Angle adjustment	2Legs(Front)	

3. Electrical part specification & standard

ITEM		STANDARD		
Model		SR-21NME, 21WME / SR-24NME, 24WME		
Power source		115V/60HZ	220V/50~60HZ	230~240V/50HZ
Compressor	Model	SD152C-L1W2	SD162H-L1U2	SD162Q-L1U2
	Starting type	C.S.R	R.S.C.R	
	Oil charge	FREOL α -15c / 200cc		
Evaporator		Split fin type		
Condenser		Forced & natural convection		
Dryer		Molecular sieve		
Capillary tube		I.D 0.75 x 3400 (mm)		
Thermostat	Freezer	8032		
	Refrigerator	D705-E9C		
Defrost-thermo	Bimetal (ON/OFF)	Type	AC250V / 5A	
		Oper. temp	ON:-5 \pm 3 $^{\circ}$ C/OFF:12 \pm 3 $^{\circ}$ C	
	Thermal fuse	Regularity	AC 250V / 10A	
		Oper. temp.	72 \pm 4 $^{\circ}$ C	
Defrost-timer	Type	TMDE714F1	TMD706SC1	
	Cycle	6Hr 35min		
	Time	13min 40s		
Starting-relay	Model	912X32E100MQ16APE3(60Hz)	912X32E100MQ16APE2	
	Resistance	40 Ω \pm 20%		33 Ω \pm 20%
Over load protector	Model	4TM427	4TM265	4TM222
		PHBYY-53	PHBYY-53	PHBYY-53
	Close temp	61 \pm 9 $^{\circ}$ C		
	Open temp	125 \pm 5 $^{\circ}$ C		
Capacitor	Running	125 μ F / 100VAC	3.5 μ F/350VAC	
	Starting	8 μ F / 250VAC	-	
Motor-fan		IS3210SMF6D	IS3210SNF7A	
Heater-defrost		130W/93 Ω	130W406.9 Ω	130W443 Ω
Lamp		110V / 15W	220V/15W	240V/15W
Door-switch		SSD-5 250V/0.5A		
Earth screw		BSBN(Brass screw)		

4.Product Dimension

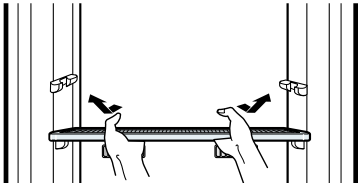


MODEL	A	B	Remark
SR-21NME, 21WME	1453	874.5	
SR-24NME, 24WME	1553	974.5	

5. Identifying and disassembling the parts

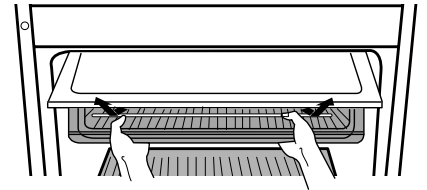
To remove shelves in the freezing compartment

- First remove the icemaking molds. Tilt the shell up at front, then lift it up pull it out of the tracks.



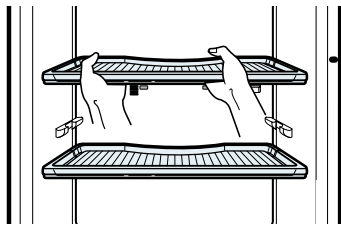
To remove shelves in the chilled compartment

- Lift up the cover, push the cover to the right until the mounting hook disengages, then disengage the other mounting hook and pull out the cover.
- Pull the shelf forward until it stops. Then lift it up and pull it out.



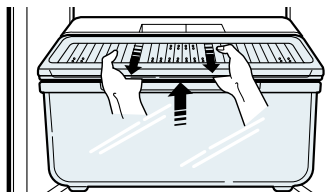
To remove shelves in the refrigerating compartment

- Hold the shelf by the front and pull it forward of the rack.



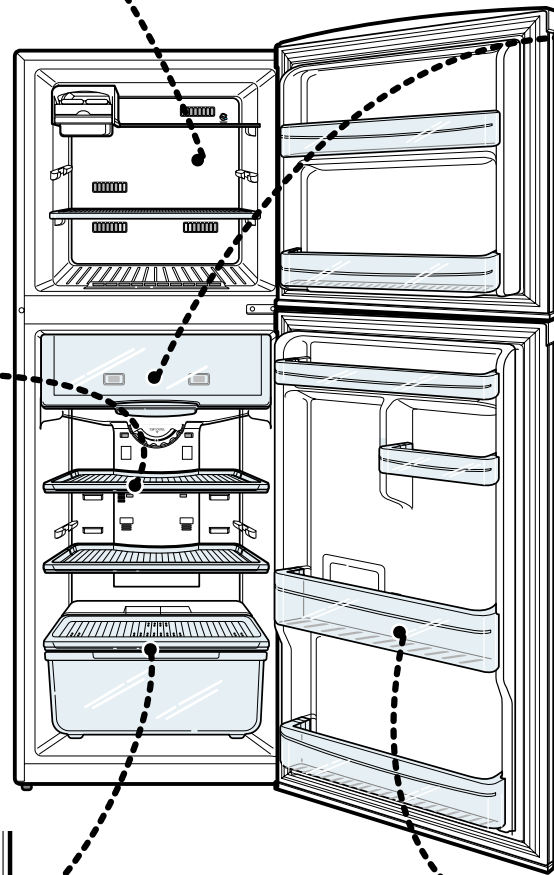
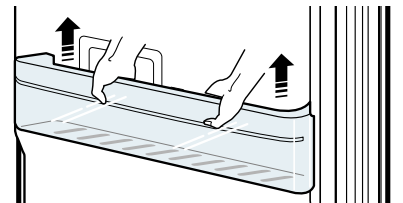
To remove storage drawers and covers

- Lift up to remove the cover. Pull the drawer out then lifting it up.



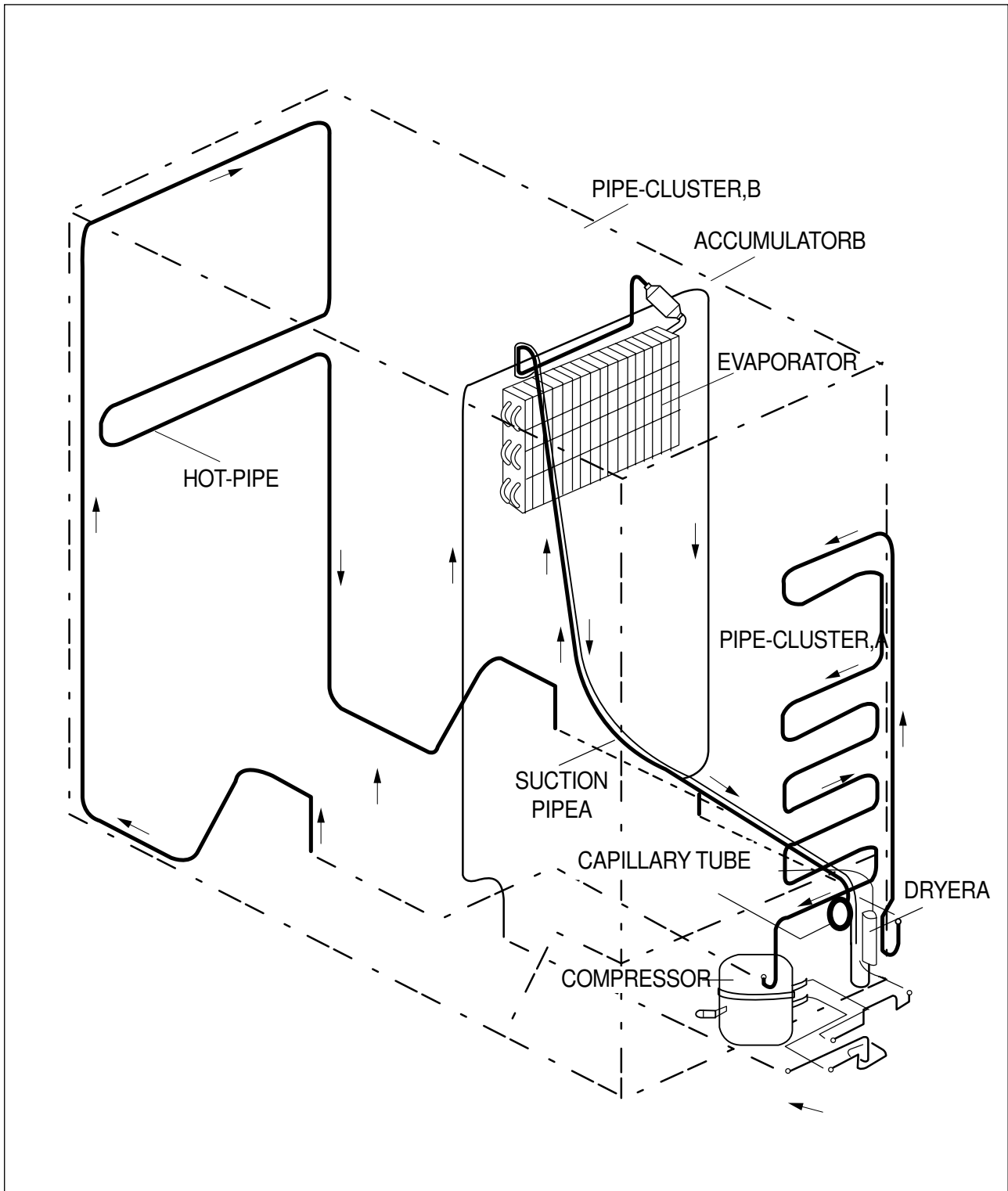
To remove door bins

- While pushing the bin to the left, lift it up to disengage.



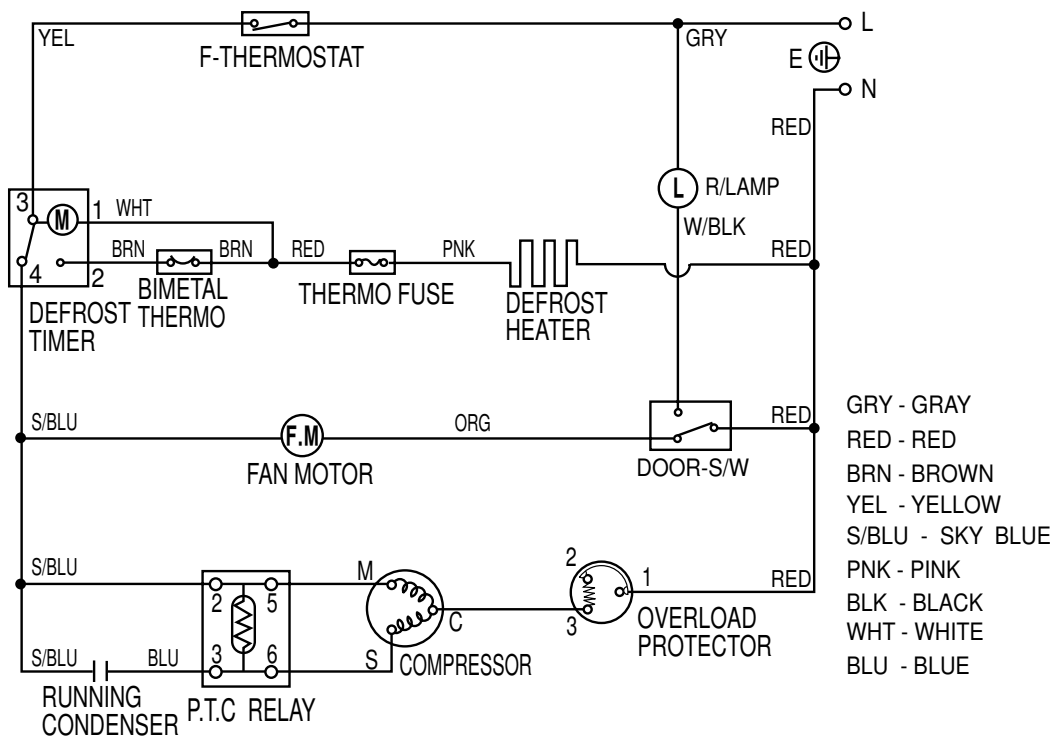
6. Schematic diagram of coolant circulation

COMPRESSOR → CLUSTER PIPE → HOT PIPE → DRYER → CAPILLARY TUBE
→ EVAPORATOR → ACCUMULATOR → SUCTION PIPE → COMPRESSOR

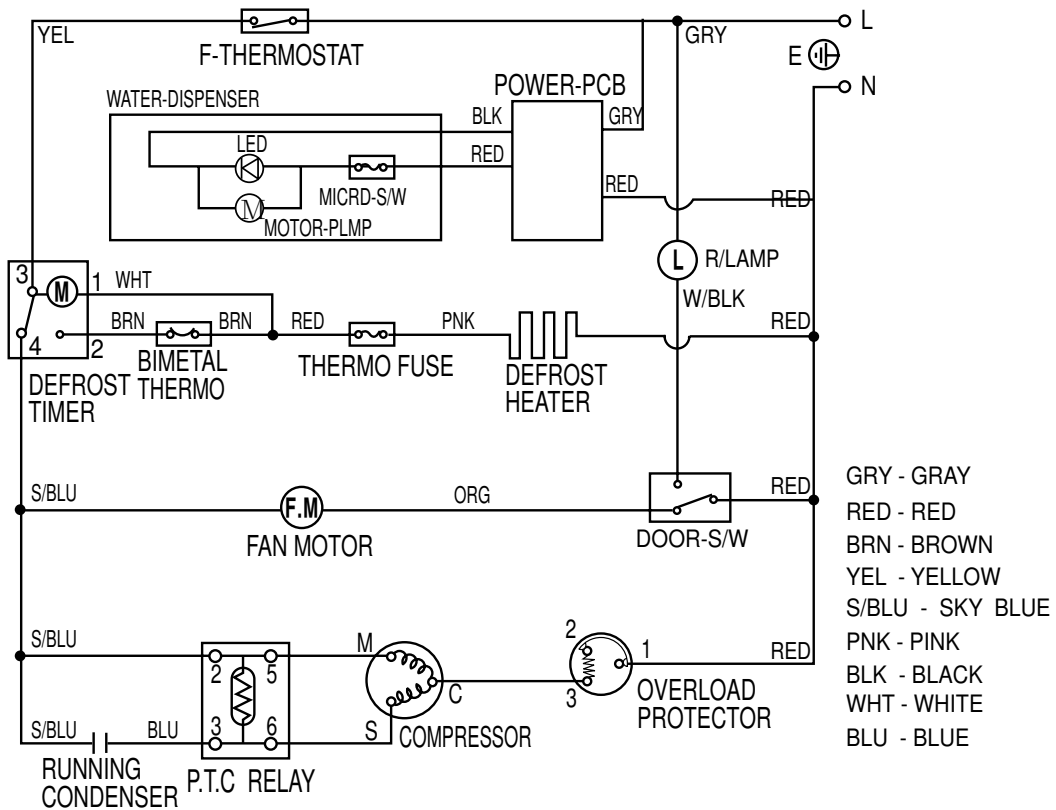


7.Circuit diagram

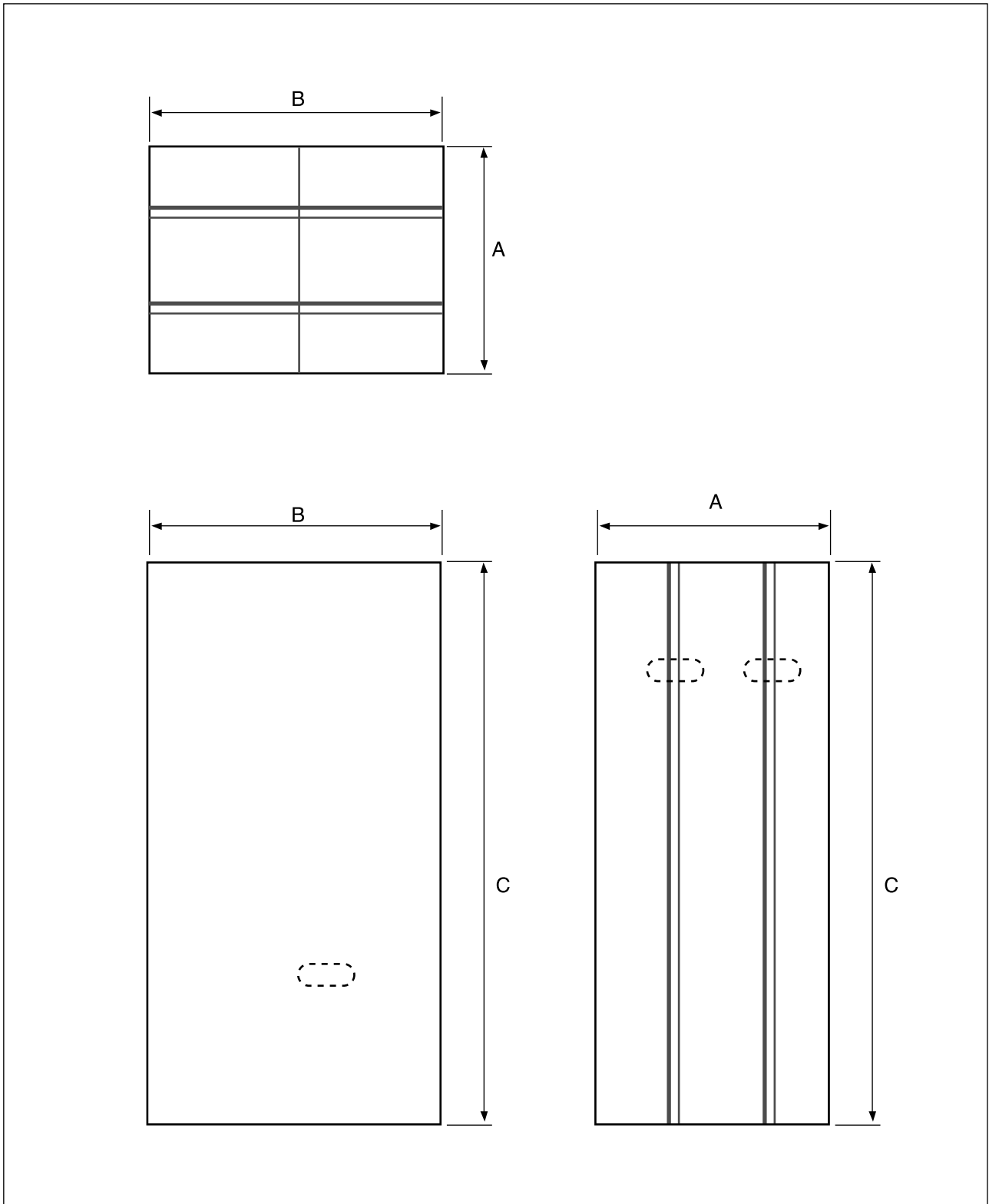
7-1. SR-21/24NME



7-2. SR-21/24WME



8.Packing dimension



MODEL	A	B	C	Remark
SR-21NME, 21WME	636	596	1581	
SR-24NME, 24WME	636	596	1681	

9. Schematic diagram of cold air flow

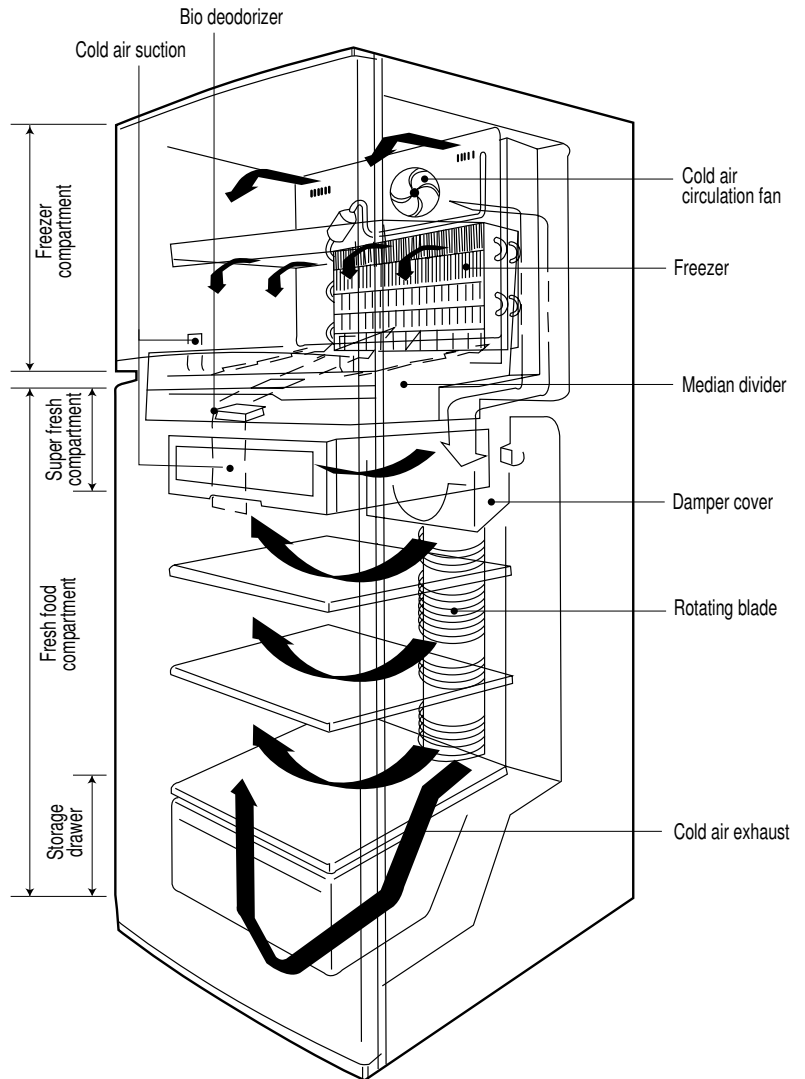
- Cold air generated from the cooling system is distributed to the freezing compartment and the refrigerating compartment by the air circulation fan.
- In the freezing compartment, cold air is distributed to the compartment as well as to the shelves from the cold air exhaust port, food is frozen in the freezing compartment by cold air shower.

Cold air that comes out of the freezing compartment is absorbed back to the lower part of the cooling system through the suction port on the median divider.

- In the refrigerating compartment, cold air is distributed to the damper cover through the median divider.

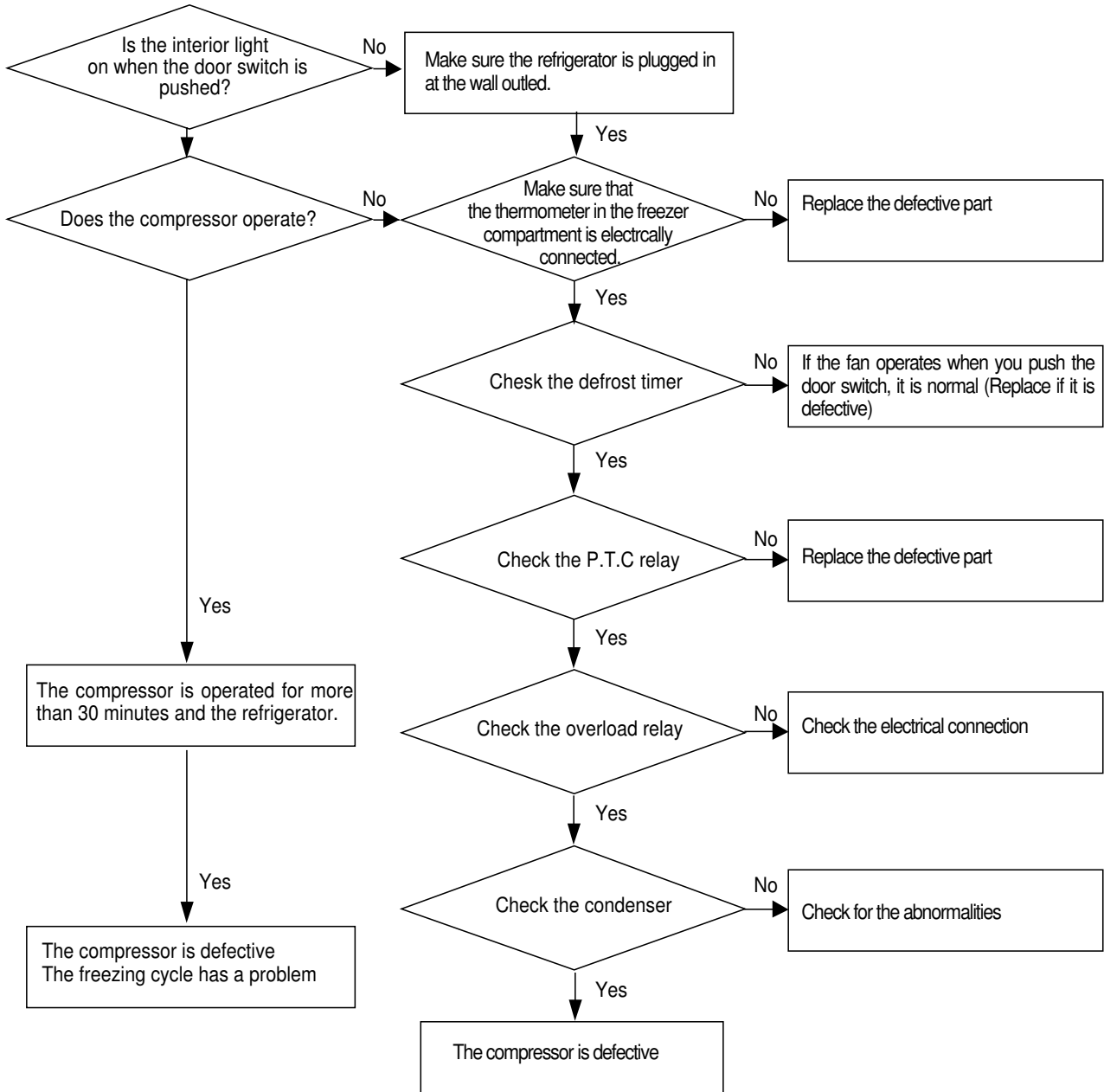
Cold air supplied to the damper cover passes through the rotating blade and evenly cools the refrigerating compartment.

After cooling the refrigerating compartment, cold air is absorbed to the lower part of the cooling system through the suction port the median divider.

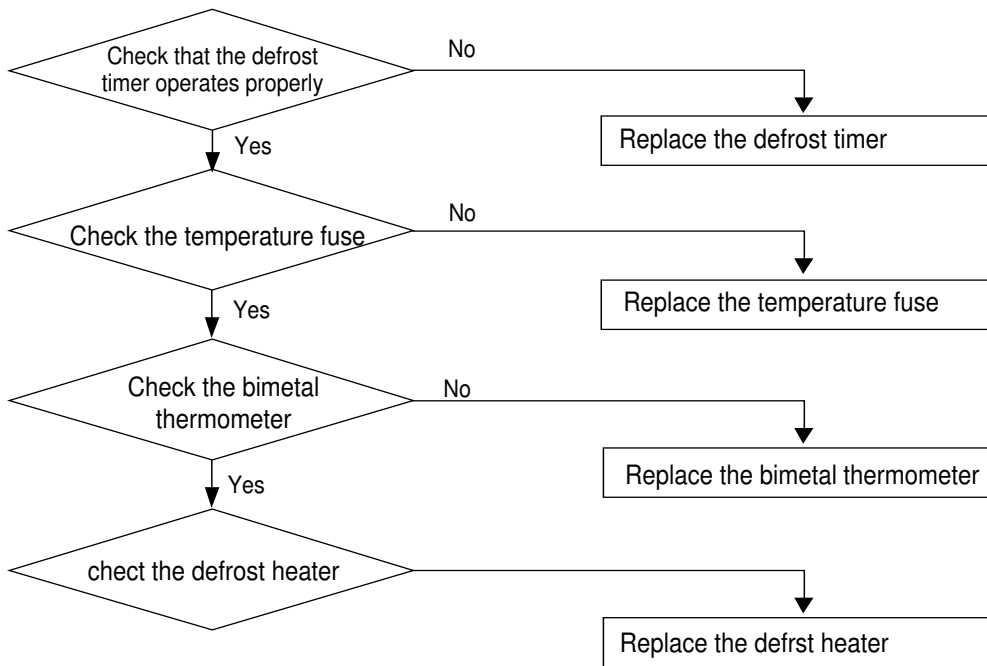


10.Troubleshooting method

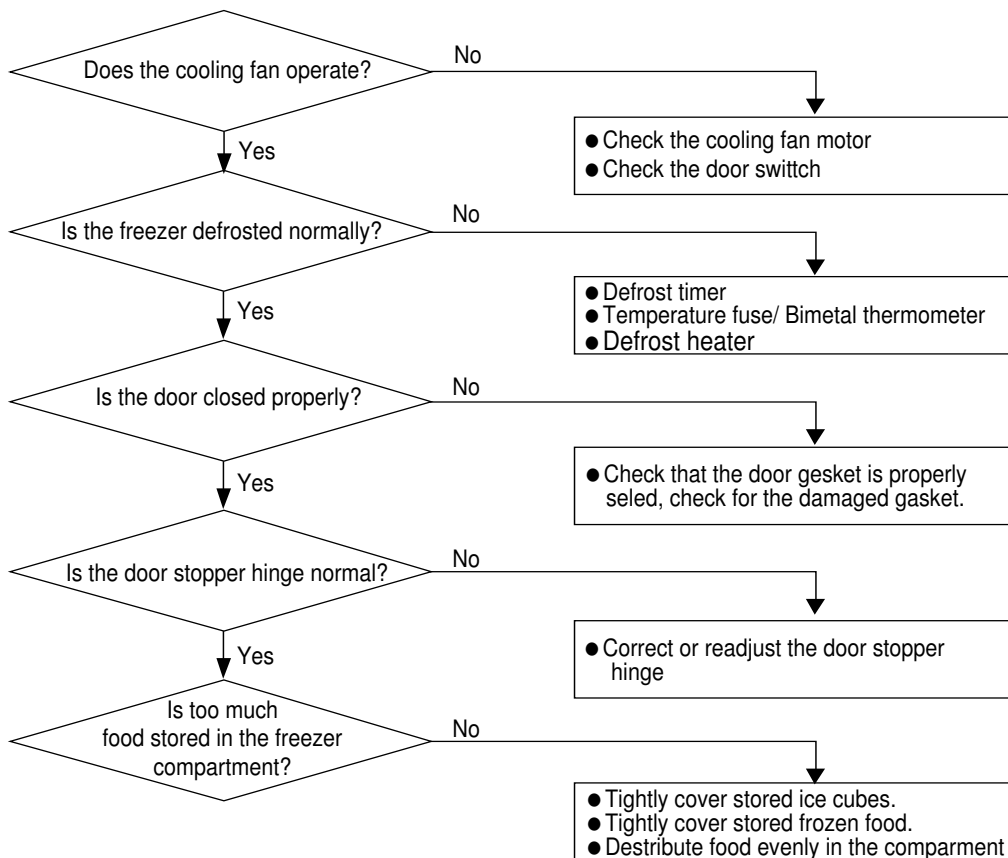
10-1 The refrigerator does not operate



10-2 Defrosting mechanism does not work



10-3 Defrosting mechanism does not work



10-4 Trouble check for the cooling cycle

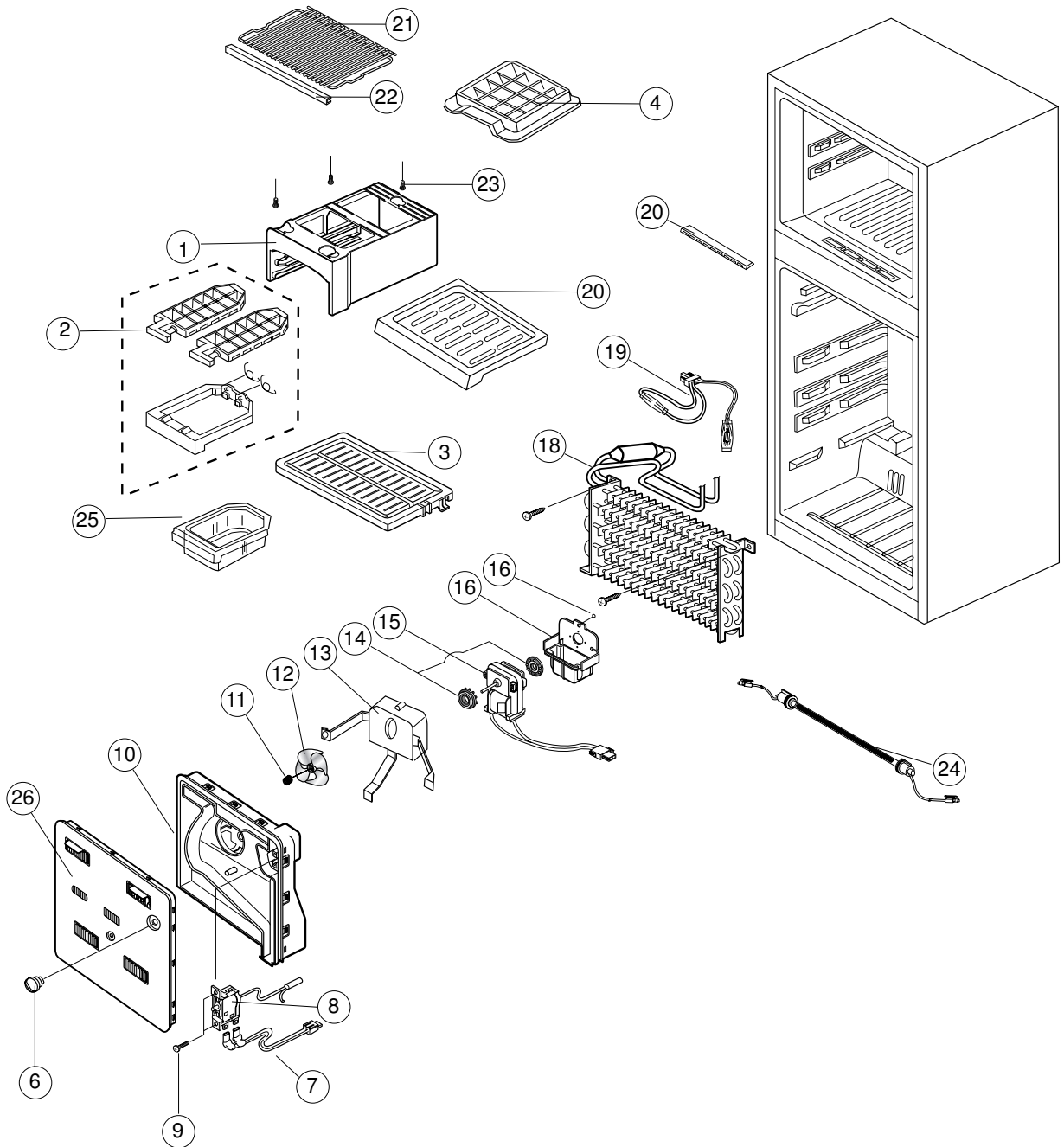
Symptom	Cause	Suggestions
<ul style="list-style-type: none"> • The EVAP cools down and warms again • The condenser warms in proportion as the EVAP cools, • The process continues to repeat. 	Moisture in the refrigerant causes the malfunction.	Replace the refrigerant
<ul style="list-style-type: none"> • The condenser is cold • The EVAP is not cold • The temperature of the compressor is high 	Foreign substances hamper the cooling cycle.	Locate the disturbed section and make repairs
<ul style="list-style-type: none"> • No difference in temperatures between suction pipe and discharge pipe • The temperature of the compressor is maintained at room temperature. • The EVAP does not cool down. 	The compressor is defective	Replace the compressor
<ul style="list-style-type: none"> • Frost on the suction pipe • The condenser is overheated. • The refrigeration in the EVAP is not efficient. 	Too much refrigerant	Replace the refrigerant
<ul style="list-style-type: none"> • The condenser is cold. • The compressor surface temperature is high. • The refrigerator is not easily cooled. 	Refrigerant leaks. (Slight refrigerant leakage causes partial cooling with frost on the EVAP)	After welding the leaked spot, replace the refrigerant

10-5 Diagnosing the main components

Components	Diagnosing methods and criteria	Location									
Compressor	<p>Use the tester to measure the resistance. - Bring the component to cool down completely before measuring.</p> <table border="1"> <thead> <tr> <th>Measuring point</th> <th>Normal</th> <th>Abnormal</th> </tr> </thead> <tbody> <tr> <td>Primary wire</td> <td>Approx 10~500kΩ</td> <td>0 Ω and</td> </tr> <tr> <td>Secondary wire</td> <td>3~20kΩ</td> <td>$\infty \Omega$</td> </tr> </tbody> </table>	Measuring point	Normal	Abnormal	Primary wire	Approx 10~500k Ω	0 Ω and	Secondary wire	3~20k Ω	$\infty \Omega$	Mechanical compartment
Measuring point	Normal	Abnormal									
Primary wire	Approx 10~500k Ω	0 Ω and									
Secondary wire	3~20k Ω	$\infty \Omega$									
P.T.C Relay	<p>Use the tester to measure the resistance. - Bring the component to cool down completely before measuring.</p> <table border="1"> <thead> <tr> <th>Normal</th> <th>Abnormal</th> </tr> </thead> <tbody> <tr> <td>Approx $\infty \Omega \sim k\Omega$</td> <td>0 Ω and $\infty \Omega$</td> </tr> </tbody> </table>	Normal	Abnormal	Approx $\infty \Omega \sim k\Omega$	0 Ω and $\infty \Omega$	Mechanical compartment					
Normal	Abnormal										
Approx $\infty \Omega \sim k\Omega$	0 Ω and $\infty \Omega$										
Condenser	<p>Use the tester to measure the resistance.</p> <table border="1"> <thead> <tr> <th>Normal</th> <th>Abnormal</th> </tr> </thead> <tbody> <tr> <td>Approx 10 $\Omega \sim 80k\Omega$</td> <td>0 Ω and $\infty \Omega$</td> </tr> </tbody> </table>	Normal	Abnormal	Approx 10 $\Omega \sim 80k\Omega$	0 Ω and $\infty \Omega$	Electrical equipment box					
Normal	Abnormal										
Approx 10 $\Omega \sim 80k\Omega$	0 Ω and $\infty \Omega$										
Overload relay	<p>Use the tester to measure the resistance. - Bring the component to cool down completely before measuring.</p> <table border="1"> <thead> <tr> <th>Normal</th> <th>Abnormal</th> </tr> </thead> <tbody> <tr> <td>Approx 200kΩ</td> <td>0 Ω and $\infty \Omega$</td> </tr> </tbody> </table>	Normal	Abnormal	Approx 200k Ω	0 Ω and $\infty \Omega$	Mechanical compartment					
Normal	Abnormal										
Approx 200k Ω	0 Ω and $\infty \Omega$										
Circuit-motor & Fan-motor	<p>Use the tester to measure the resistance. - Bring the component to cool down completely before measuring.</p> <table border="1"> <thead> <tr> <th>Normal</th> <th>Abnormal</th> </tr> </thead> <tbody> <tr> <td>Approx 100 $\Omega \sim 20k\Omega$</td> <td>0 Ω and $\infty \Omega$</td> </tr> </tbody> </table>	Normal	Abnormal	Approx 100 $\Omega \sim 20k\Omega$	0 Ω and $\infty \Omega$	Mechanical compartment Freezing compartment					
Normal	Abnormal										
Approx 100 $\Omega \sim 20k\Omega$	0 Ω and $\infty \Omega$										
Rotating blade geared-motor	<p>Use the tester to measure the resistance. - Bring the component to cool down completely before measuring.</p> <table border="1"> <thead> <tr> <th>Normal</th> <th>Abnormal</th> </tr> </thead> <tbody> <tr> <td>Approx 10 $\Omega \sim 20k\Omega$</td> <td>0 Ω and $\infty \Omega$</td> </tr> </tbody> </table>	Normal	Abnormal	Approx 10 $\Omega \sim 20k\Omega$	0 Ω and $\infty \Omega$	Refrigerating compartment					
Normal	Abnormal										
Approx 10 $\Omega \sim 20k\Omega$	0 Ω and $\infty \Omega$										
Door switch	<p>Use the tester to measure the resistance.</p> <table border="1"> <thead> <tr> <th>Measuring point</th> <th>Normal</th> <th>Abnormal</th> </tr> </thead> <tbody> <tr> <td>A B contact point</td> <td rowspan="2">Approx 200M Ω</td> <td>0 Ω and</td> </tr> <tr> <td>When the switch is on by the contact</td> <td>$\infty \Omega$</td> </tr> </tbody> </table>	Measuring point	Normal	Abnormal	A B contact point	Approx 200M Ω	0 Ω and	When the switch is on by the contact	$\infty \Omega$	Between the upper and the lower doors	
Measuring point	Normal	Abnormal									
A B contact point	Approx 200M Ω	0 Ω and									
When the switch is on by the contact		$\infty \Omega$									
Defrost timer	<p>Use the tester to measure the resistance.</p> <table border="1"> <thead> <tr> <th>Measuring point</th> <th>Normal</th> <th>Abnormal</th> </tr> </thead> <tbody> <tr> <td>Between terminals</td> <td>Approx 200kΩ</td> <td>0 Ω and</td> </tr> <tr> <td>Temperature fuse terminal</td> <td>Approx 10 $\Omega \sim 300k\Omega$</td> <td>$\infty \Omega$</td> </tr> </tbody> </table>	Measuring point	Normal	Abnormal	Between terminals	Approx 200k Ω	0 Ω and	Temperature fuse terminal	Approx 10 $\Omega \sim 300k\Omega$	$\infty \Omega$	Electrical equipment box
Measuring point	Normal	Abnormal									
Between terminals	Approx 200k Ω	0 Ω and									
Temperature fuse terminal	Approx 10 $\Omega \sim 300k\Omega$	$\infty \Omega$									
Defrost heater	<p>Use the tester to measure the resistance. - Bring the component to cool down completely before measuring.</p> <table border="1"> <thead> <tr> <th>Normal</th> <th>Abnormal</th> </tr> </thead> <tbody> <tr> <td>Approx 3k$\Omega \sim 6k\Omega$</td> <td>$\infty M \Omega \sim \infty \Omega$</td> </tr> </tbody> </table>	Normal	Abnormal	Approx 3k $\Omega \sim 6k\Omega$	$\infty M \Omega \sim \infty \Omega$	Lower EVAP					
Normal	Abnormal										
Approx 3k $\Omega \sim 6k\Omega$	$\infty M \Omega \sim \infty \Omega$										
Bimetal Temperature fuse	<p>Use the tester to measure the resistance.</p> <table border="1"> <thead> <tr> <th>Measuring point</th> <th>Normal</th> <th>Abnormal</th> </tr> </thead> <tbody> <tr> <td>Bimetal terminal</td> <td rowspan="2">Approx 200M Ω</td> <td rowspan="2">$\infty \Omega \sim \infty \Omega$</td> </tr> <tr> <td>Temperature fuse terminal</td> </tr> </tbody> </table>	Measuring point	Normal	Abnormal	Bimetal terminal	Approx 200M Ω	$\infty \Omega \sim \infty \Omega$	Temperature fuse terminal	EVAP		
Measuring point	Normal	Abnormal									
Bimetal terminal	Approx 200M Ω	$\infty \Omega \sim \infty \Omega$									
Temperature fuse terminal											

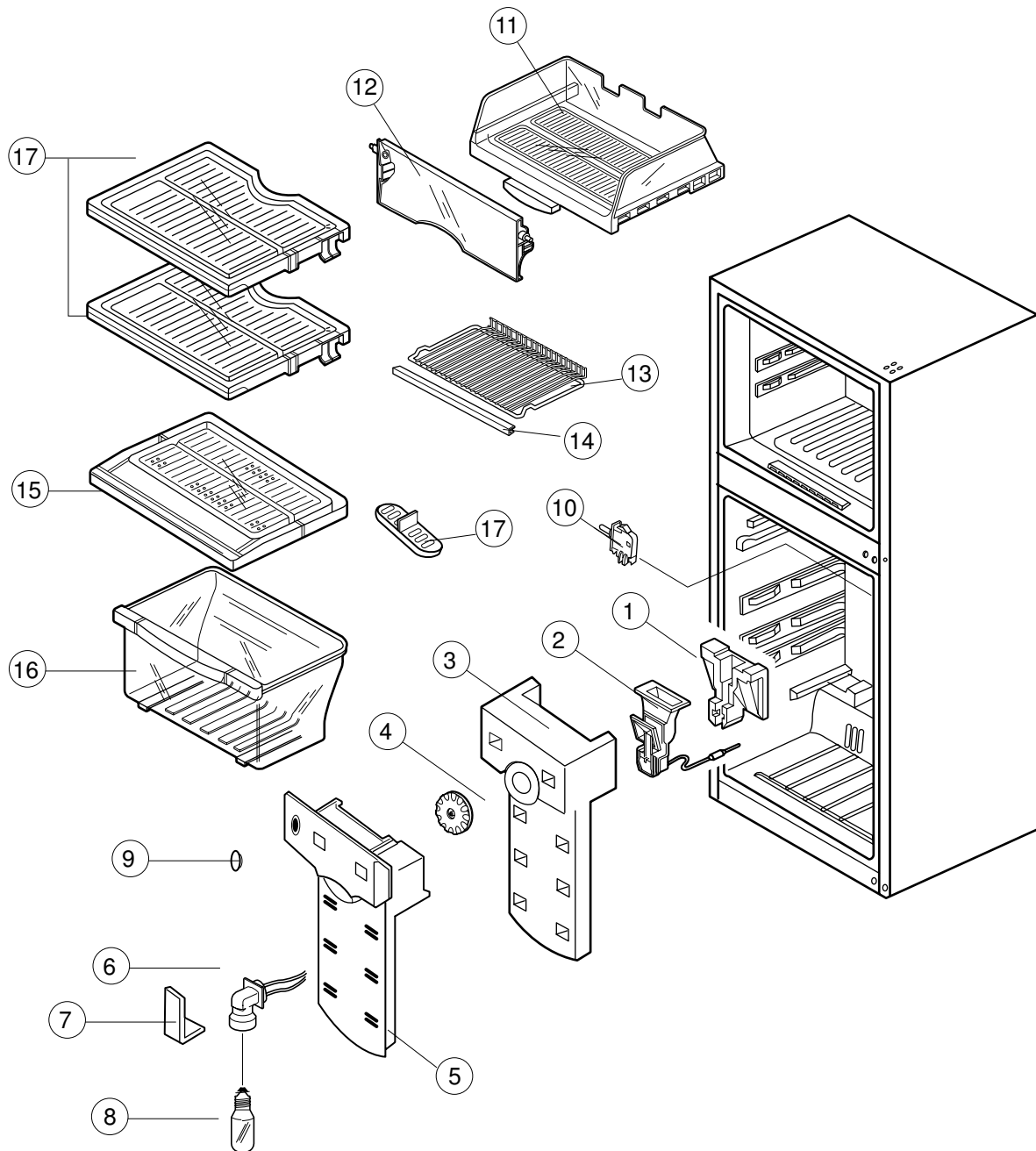
11. Exploded View & Parts List

11-1 Freezing compartment



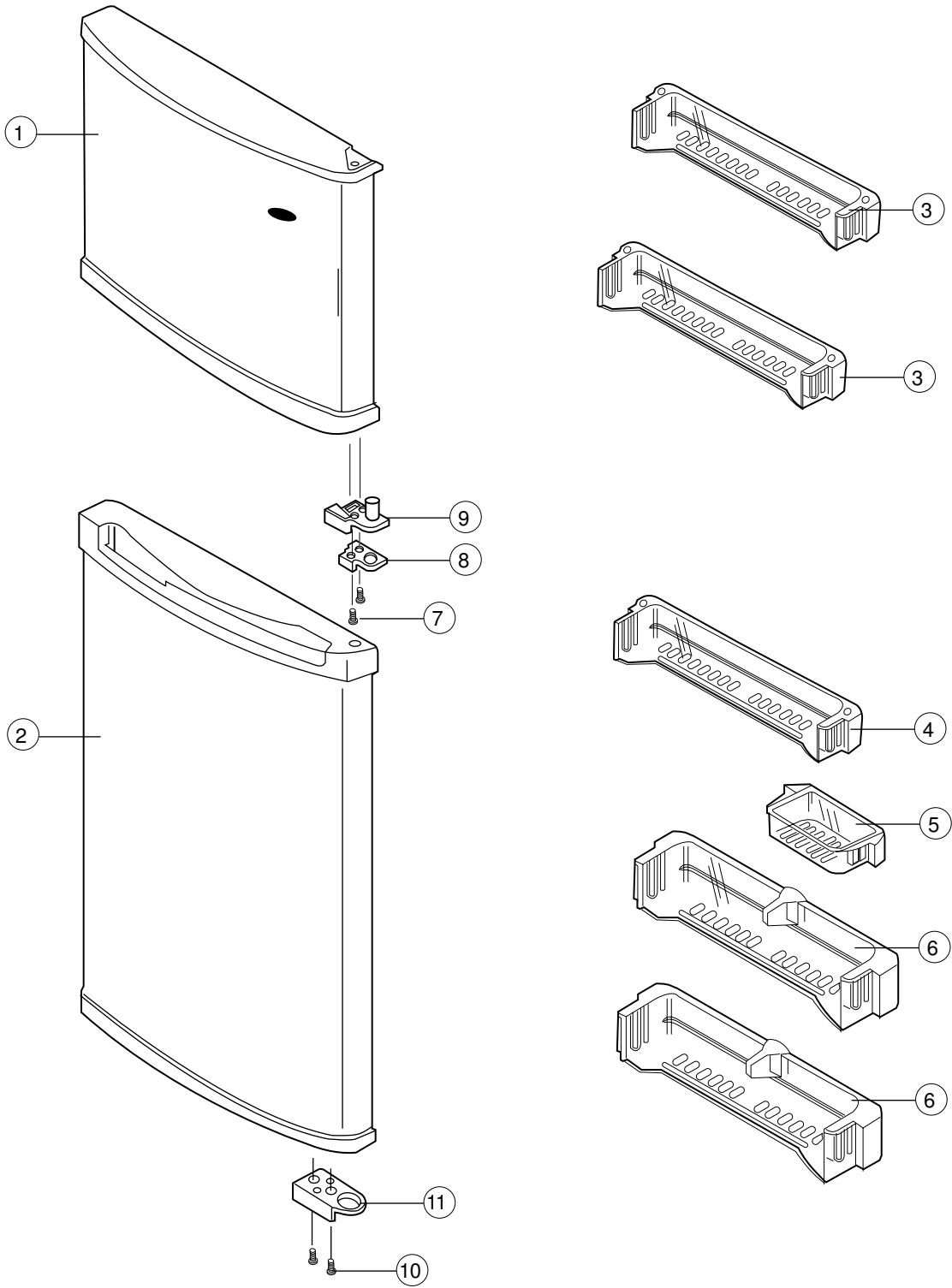
NO	CODE-NO	Items	Specifications	N-SAFETY						Safety		Asstrlia	
				110-127V/60Hz		220V/50Hz		230V/50Hz		230V/50Hz		230V/50Hz	
				SR-21 NME	SR-24 NME	SR-21 NME	SR-24 NME	SR-21 NME	SR-24 NME	SR-21 NME	SR-24 NME	SR-21 NME	SR-24 NME
1	DA61-70264A	SUPT-TRAY ICE	HIPS	1	1	1	1	1	1	1	1	1	1
2	DA67-00449A	CASE TRAY ICE ASSY	SAMSUNG	1	1	1	1	1	1	1	1	1	1
3	DA67-20321B	SHELF FREEZER	GPPS	1	1	1	1	1	1	1	1	1	1
4	DA67-40329A	TRAY ICE B	PP	1	1	1	1	1	1	1	1	1	1
5	DA67-20323A	SHELF FREEZER SUB	GPPS	1	1	1	1	1	1	1	1	1	1
6	DA64-00363A	KNON F-THERMO	HIPS	1	1	1	1	1	1	1	1	1	1
7	DA39-20410A	WIRE HARMESS THERMO	110~240V	1	1	1	1	1	1	1	1	1	1
8	DA47-10167A	THERMOSTAT	MARCOT 8032	1	1	1	1	1	1	1	1	1	1
9	6002-000470	SCREW TAP, TH	M4.0, L10	1	1	1	1	1	1	1	1	1	1
10	DA72-40478A	COVER EVAP REAR	FOAM, PS	1	1	1	1	1	1	-	-	1	1
	DA72-40478B	COVER EVAP REAR	FOAM,VO	-	-	-	-	-	-	1	1	-	-
11	DA61-20149A	SPRING FAN	STS27WR	1	1	1	1	1	1	1	1	1	1
12	DA31-20138A	FAN	ABS	1	1	1	1	1	1	1	1	1	1
13	DA71-50233A	BRACKET MOTOR	ABS	1	1	1	1	1	1	-	-	1	1
	DA71-50233B	BRACKET MOTOR	VO	-	-	-	-	-	-	1	1	-	-
14	DA63-40289A	GROMMET FAN MOTOR	NBR	2	2	2	2	2	2	2	2	2	2
15	DA31-10109H	MOTOR FAN	115V/60HZ	1	1	-	-	-	-	-	-	-	-
	DA31-10109G	MOTOR-FAN	220V/50~60HZ	-	-	1	1	-	-	-	-	-	-
	DA31-10109J	MOTOR-FAN	1240V/50HZ	-	-	-	-	1	1	1	1	1	1
16	DA63-1105A	COVER MOTOR	PP	1	1	1	1	1	1	-	-	1	1
	DA63-11051B	COVER MOTOR	VO	-	-	-	-	-	-	1	1	-	-
17	DA60-10104B	SCREW TAP, TH	P15.0,L13	1	1	1	1	1	1	1	1	1	1
18	DA59-40243A	EVPAPORATOR	SR-21/24NM, YOOWON	1	1	1	1	1	1	1	1	1	1
19	DA47-10150E	THERMO BIMETAL ASSY	125/150V	1	1	1	1	1	1	1	1	-	-
	DA67-10150B	THERMO BIMETAL ASSY	AUSTALIA ONLY	-	-	-	-	-	-	-	-	1	1
20	DA63-11050A	COVER AIR COLD	HIPS, SC-93437R	1	1	1	1	1	1	1	1	1	1
21	DA67-20324B	SHELF WIRE FRE	NSWR10, SR-9343R	1	1	1	1	1	1	1	1	1	1
22	DA64-20206C	TRIM SHELF FRE	PVC, L397	1	1	1	1	1	1	1	1	1	1
23	6002-000526	SCREW TAP, TH	M4.0, L12	1	1	1	1	1	1	1	1	1	1
24	DA47-20210A	GLASS HETER	220~240V	-	-	1	1	1	1	1	1	-	-
	DA47-20210B	GLASS HETER	110~127V	1	1	-	-	-	-	-	-	-	-
	DA47-20210C	GLASS HETER	240V(AUS)	-	-	-	-	-	-	-	-	1	1
25	DA67-40328A	TRAY ICE CUBE	GPPS, SC-94452M	1	1	1	1	1	1	1	1	1	1
26		COVER-EVAP, FRONT	PP	1	1	1	1	1	1	1	1	1	1

11-2 Refrigerating compartment



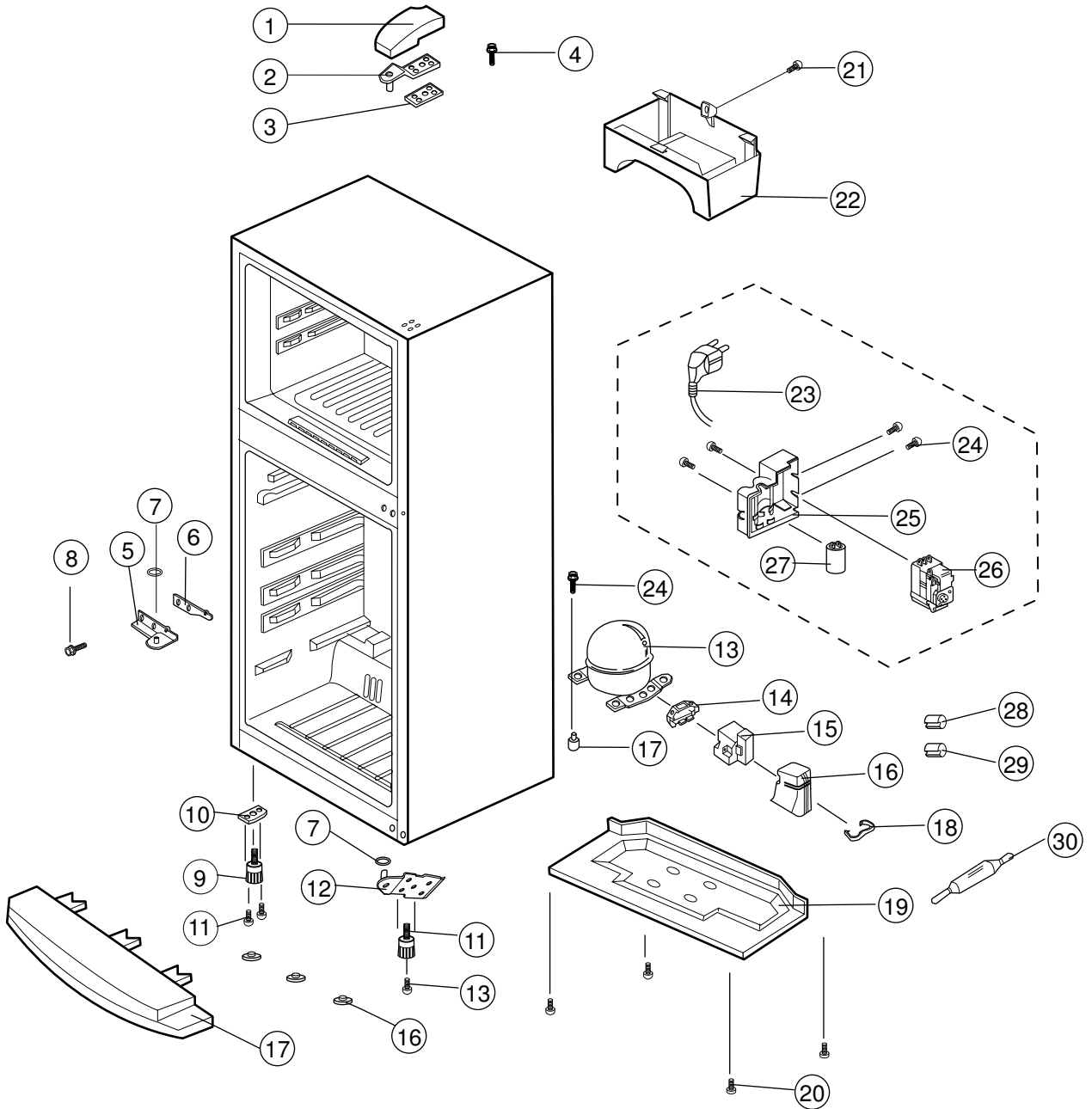
NO	CODE-NO	Items	Specifications	N-SAFETY						Safety		Asstrlia	
				110-127V/60Hz		220V/50Hz		230V/50Hz		230V/50Hz		230V/50Hz	
				SR-21 NME	SR-24 NME	SR-21 NME	SR-24 NME	SR-21 NME	SR-24 NME	SR-21 NME	SR-24 NME	SR-21 NME	SR-24 NME
1	DA72-40482A	Ins-Damper B	FOAM PS	1	1	1	1	1	1	1	1	1	
2	DA67-10264B	Case Damper Therm-Ass	705-E9C	1	1	1	1	1	1	1	1	1	
3	DA72-40476A	Ins-Damper A	FOAM PS	1	1	1	1	1	1	1	1	1	
4	DA64-0034A	Knob-Thermo Damper	ABS	1	1	1	1	1	1	1	1	1	
5	DA63-00679A	Cover Damper Ref	PP	1	1	1	1	1	1	1	1	1	
6	DA47-40119A	Lam Holder	E17-, 110~240V, N-safety	1	1	1	1	-	-	1	1	1	1
	DA47-40112L	Lam Holder	E14-, 220~240V, safety	-	-	-	-	1	1	-	-	-	-
7	DA63-11052A	Cover Lamp Ref	GPPS	1	1	1	1	1	1	1	1	1	
8	4713-000185	Lamp Incandescent	E17-, 110~127V	1	1	-	-	-	-	-	-	-	-
	4713-001037	Lamp Incandescent	E17-, 220~240V	-	-	1	1	1	1	-	-	1	1
	4713-000213	Lamp Incandescent	E14,220~240V,Safety	-	-	-	-	-	-	1	1	-	-
9	DA68-00346A	Label Grommet	PVC	1	1	1	1	1	1	1	1	1	
10	DA34-10108D	Switch Door	300/125V, SSD-5	1	1	1	1	1	1	1	1	1	
11	DA67-40326A	Tray Chil Room	GPPS	1	1	1	1	1	1	1	1	-	-
	DA67-40326B-	Tray Chil Room	SAN-Bio	-	-	-	-	-	-	-	-	1	1
12	DA63-00677A	Cover Chil Room	Gpps, Screen E-Type	1	1	1	1	1	1	1	1	1	
13	DA67-20326B	Shelf Wire Ref	MSWR10	-	-	-	-	-	-	-	-	-	-
14	DA64-20206D	Trim Shelf Ref	PVC } Option Parts	-	-	-	-	-	-	-	-	-	-
15	DA63-11053A	Cover Tray Vegetable	GPPS	1	1	1	1	1	1	1	1	1	
16	DA67-00448A	Tray Vegetable	GPPS, Screen E-Type	1	1	1	1	1	1	1	1	1	
17	DA67-20322A	Shelf Ref	GPPS	1	1	1	1	1	1	1	1	1	
18	DA67-10465A	Contorol Humidity Veg	HIPS	1	1	1	1	1	1	1	1	1	

11-3 Door parts



NO	CODE-NO	Items	Specifications	SR-21NME				SR-24NME				SR-25NME	
				MG	LG	SW	TO	MG	LG	SW	TO	MG	LG
1	DA91-01341A	Assy Door Foam Fre	SR-21/24NM,E-Type	1	-	-	-	1	-	-	-	1	
	DA91-01269B	Assy Door Foam Fre	SR-21/24NM,E-Type	-	1	-	-	-	1	-	-	-	
	DA91-01341G	Assy Door Foam Fre	SR-21/24NM,E-Type	-	-	1	-	-	-	1	-	-	1
	DA91-01341H	Assy Door Foam Fre	SR-21/24NM,E-Type	-	-	-	1	-	-	-	1	-	-
2	DA90-00832E	Assy Door Foam Ref	SR-21NM,E-TYPE,N-Key	1	-	-	-	-	-	-	-	-	-
	DA90-00832F	Assy Door Foam Ref	SR-21NM,E-TYPE,N-Key	-	1	-	-	-	-	-	-	-	-
	DA90-00832Q	Assy Door Foam Ref	SR-21NM,E-TYPE,N-Key	-	-	1	-	-	-	-	-	-	-
	DA90-00832S	Assy Door Foam Ref	SR-21NM,E-TYPE,N-Key	-	-	-	1	-	-	-	-	-	-
	DA90-00832A	Assy Door Foam Ref	SR-21NM,E-TYPE,Key	1	-	-	-	-	-	-	-	-	-
	DA90-00832B	Assy Door Foam Ref	SR-21NM,E-TYPE,Key	-	1	-	-	-	-	-	-	-	-
	DA90-00832L	Assy Door Foam Ref	SR-21NM,E-TYPE,Key	-	-	1	-	-	-	-	-	-	-
	DA90-00832M	Assy Door Foam Ref	SR-21NM,E-TYPE,Key	-	-	-	1	-	-	-	-	-	-
	DA90-00833E	Assy Door Foam Ref	SR-24NM,E-TYPE,N-Key	-	-	-	-	1	-	-	-	1	-
	DA90-00833F	Assy Door Foam Ref	SR-24NM,E-TYPE,N-Key	-	-	-	-	-	1	-	-	-	
	DA90-00833Q	Assy Door Foam Ref	SR-24NM,E-TYPE,N-Key	-	-	-	-	-	-	1	-	-	1
	DA90-00833S	Assy Door Foam Ref	SR-24NM,E-TYPE,N-Key	-	-	-	-	1	-	-	1	-	-
	DA90-00833A	Assy Door Foam Ref	SR-24NM,E-TYPE,Key	-	-	-	-	-	1	-	-	-	-
	DA90-00833B	Assy Door Foam Ref	SR-24NM,E-TYPE,Key	-	-	-	-	-	-	1	-	-	-
DA90-00833L	Assy Door Foam Ref	SR-24NM,E-TYPE,Key	-	-	-	-	-	-	-	-	-	-	
DA90-00833M	Assy Door Foam Ref	SR-24NM,E-TYPE,Key	-	-	-	-	-	-	-	-	1	-	
3	DA63-00684A	Guard Freezer	GPPS, E-Type	2	2	2	2	2	2	2	2	2	2
4	DA63-00683A	Guard Egg	GPPS, E-Type	1	1	1	1	1	1	1	1	1	1
5	DA63-00680A	Guard Variety	GPPS, E-Type	1	1	1	1	2	2	2	2	2	2
6	DA63-00681A	Guard Bottle A	GPPS, E-Type	2	2	2	2	2	2	2	2	2	2
7	6001-000701	Screw Machince	M4, L12	1	1	1	1	1	1	1	1	1	1
8	DA71-40185A	Stopper door C	SPC1	1	1	1	1	1	1	1	1	1	1
9	DA71-40186A	Stopper door A	POM	1	-	-	-	1	-	-	-	1	1
	DA71-40186B	Stopper door A	POM	-	1	-	-	-	1	-	-	-	-
	DA71-40186D	Stopper door A	POM	-	-	1	-	-	-	1	-	-	-
	DA71-40186F	Stopper door A	POM	-	-	-	1	-	-	-	1	-	-
10	6001-000039	Screw Machince	M4, L8	1	1	1	1	1	1	1	1	1	1
11	DA61-00162A	Stopper door B	T2.5	1	1	1	1	1	1	1	1	1	1
12	DA68-50209B	Inlay Mascot	PET+UV. S/S	1	1	1	1	1	1	1	1	-	-
	DA68-50209C	Inlay Mascot	India only	-	-	-	-	-	-	-	-	1	1

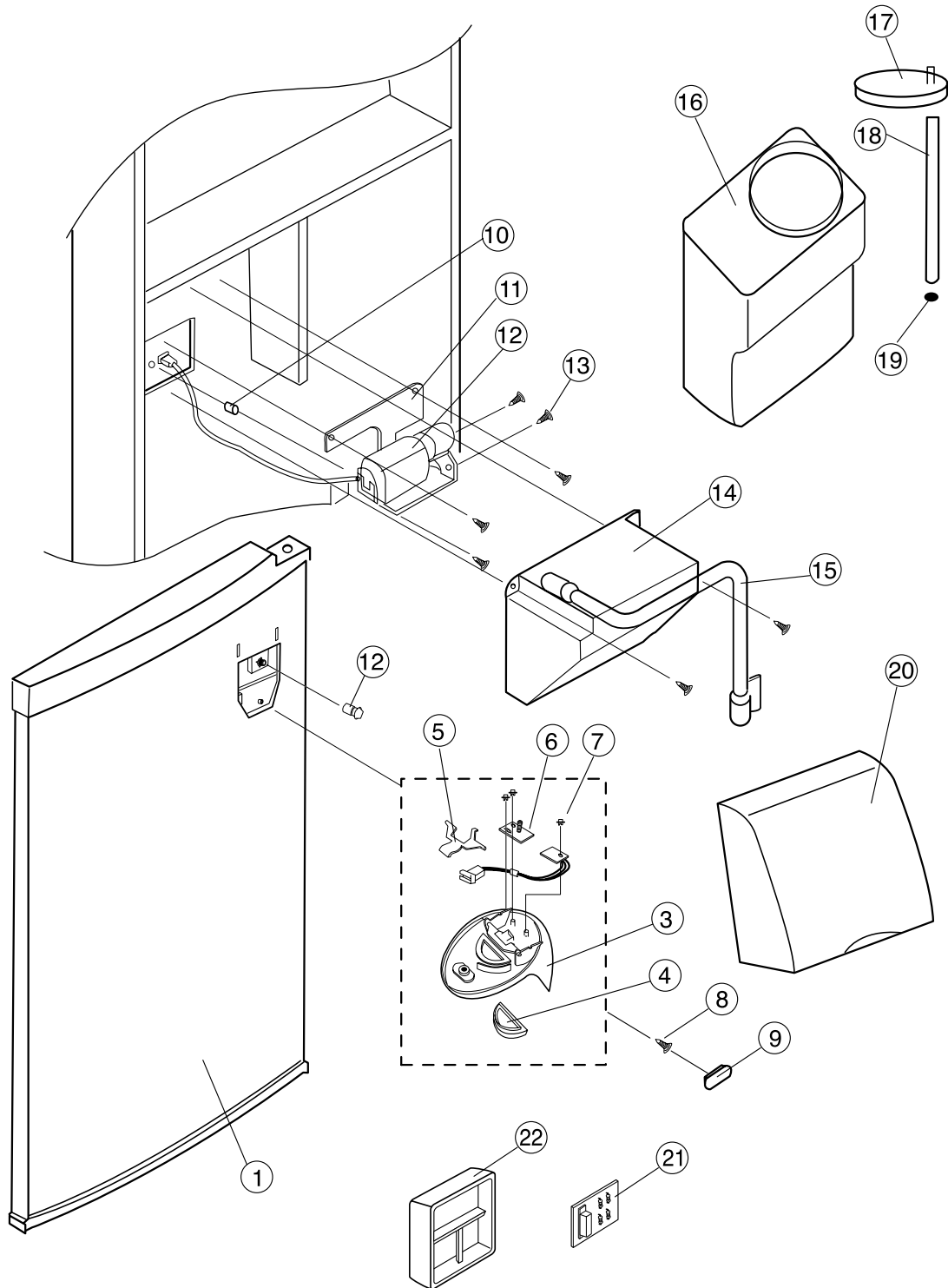
11-4 Cabinet Parts & Unit



NO	CODE-NO	Items	Specifications	SR-21/24NME - N-Safety									SR-21/24NME Safety													
				110~127V/60HZ			110~127V/60HZ			110~127V/60HZ			110~127V/60HZ			110~127V/60HZ			110~127V/60HZ							
				M	L	S	M	L	S	M	L	S	M	L	S	M	L	S	M	L	S					
1	DA67-00360B	Cap Hing Up	PP.	1	-	-	1	-	-	1	-	-	1	-	-	1	-	-	1	-	-	1	-	-		
	DA67-00360A	Cap Hing Up	PP.	-	1	-	-	1	-	-	1	-	-	1	-	-	1	-	-	1	-	-	1	-	-	
	DA67-00360C	Cap Hing Up	PP.	-		1	-	-	1	-	-	1	-	-	1	-	-	1	-	-	1	-	-	1	-	-
2	DA71-10543B	HING Up	SHP1	1	1	1	1	1	1	1	1	1	1	1	1	1	1	1	1	1	1	1	1	1	1	1
3	DA63-00697A	Shim hing Up	RD. PVC.0.5t	1	1	1	1	1	1	1	1	1	1	1	1	1	1	1	1	1	1	1	1	1	1	1
4	DA60-10124B	Screw tap Tite	HH, M6, L12, ZPC2-Y	3	3	3	3	3	3	3	3	3	3	3	3	3	3	3	3	3	3	3	3	3	3	3
5	DA61-10232A	Hing Mid	SHP1	1	1	1	1	1	1	1	1	1	1	1	1	1	1	1	1	1	1	1	1	1	1	1
6	DA63-50209A	Shim hing Mid	RD, PVC	1	1	1	1	1	1	1	1	1	1	1	1	1	1	1	1	1	1	1	1	1	1	1
7	DA60-40127A	Washer	NY88	2	2	2	2	2	2	2	2	2	2	2	2	2	2	2	2	2	2	2	2	2	2	2
8	DA60-10124B	Screw tap Tite	HH, M6, L12, ZPC2-Y	2	2	2	2	2	2	2	2	2	2	2	2	2	2	2	2	2	2	2	2	2	2	2
9	DA61-30131A	Foot Front	PP	2	2	2	2	2	2	2	2	2	2	2	2	2	2	2	2	2	2	2	2	2	2	2
10	DA71-10542A	Reing Leg	SCP1	1	1	1	1	1	1	1	1	1	1	1	1	1	1	1	1	1	1	1	1	1	1	1
11	DA60-10124B	Screw Tap Tite	HH, M6, L12, ZPC2-Y	6	6	6	6	6	6	6	6	6	6	6	6	6	6	6	6	6	6	6	6	6	6	6
12	DA61-00163B	Hing Low	SHP1	1	1	1	1	1	1	1	1	1	1	1	1	-	-	-	-	-	-	-	-	-	-	-
13	DA59-00139A	Compresspr	AE1360YK-K, 220V/50Hz	-	-	-	1	1	1	-	-	-	-	-	-	-	-	-	-	-	-	-	-	-	-	-
14	DA35-00015A	O/L Protector	AE1360YK-K	-	-	-	1	1	1	-	-	-	-	-	-	-	-	-	-	-	-	-	-	-	-	-
15	DA35-00014A	Relay starting	AE1360YK-K	-	-	-	1	1	1	-	-	-	-	-	-	-	-	-	-	-	-	-	-	-	-	-
	DA60-40142A	SCREW Machine	TH,M4,L8	-	-	-	1	1	1	-	-	-	-	-	-	-	-	-	-	-	-	-	-	-	-	-
	DA60-40125A	Washer Hex	ID8.2,OD22, T0.0.8	-	-	-	3	3	1	-	-	-	-	-	-	-	-	-	-	-	-	-	-	-	-	-
	DA61-70259A	Supt	SCP1, TO.8,ZPCwht	-	-	-	3	3	1	-	-	-	-	-	-	-	-	-	-	-	-	-	-	-	-	-
	DA63-01001A	Cover Relay	Noryl,BLK, T2.0	-	-	-	1	1	1	-	-	-	-	-	-	-	-	-	-	-	-	-	-	-	-	-
	DA63-40269A	Grommet Comp	NR,H21.5, BLK	-	-	-	4	4	4	-	-	-	-	-	-	-	-	-	-	-	-	-	-	-	-	-
	DA65-20122A	Clamp	SK5,ZPC	-	-	-	1	1	1	--	--	--	--	--	--	--	--	--	--	--	--	--	--	--	--	--
	DA59-00097A	Compressor	SD152C-L1U2, 110V/60Hz	1	1	1	-	-	-	-	-	-	-	-	-	-	-	-	-	-	-	-	-	-	-	-
	DA35-10002A	PTC Relay	SD152C-L1U2,912X32E6R8MQ14APE2	1	1	1	-	-	-	-	-	-	-	-	-	-	-	-	-	-	-	-	-	-	-	-
	DA34-10003R	O/L Protector	SD152C-L1U2,4TM427PHBY-53	1	1	1	-	-	-	-	-	-	-	-	-	-	-	-	-	-	-	-	-	-	-	-
	DA59-50002A	Compressor	SD162H-L1U2,220V/50~60Hz	-	-	-	-	-	-	1	1	1	-	-	-	1	1	1	-	-	-	-	-	-	-	-
	DA35-10002D	PTC Relay	SD162H-L1U2,912X35E33MT20APE2	-	-	-	-	-	-	1	1	1	-	-	-	1	1	1	-	-	-	-	-	-	-	-
	DA34-10003V	O/L Protector	SD162H-L1U2,4TM265RHBY-53	-	-	-	-	-	-	1	1	1	-	-	-	1	1	1	-	-	-	-	-	-	-	-
	DA59-50003A	Compressor	SD162Q-L1U2,240V/50Hz	-	-	-	-	-	-	-	-	-	1	1	1	-	-	-	-	-	-	1	1	1	1	1
	DA35-10003D	PTC Relay	SD162Q-L1U2,PTHAS-T33M385D	-	-	-	-	-	-	-	-	-	1	1	1	-	-	-	-	-	-	1	1	1	1	1
	DA34-10003K	O/L Protector	SD152H-L1U2,4TM222PHBY-53	-	-	-	-	-	-	-	-	-	1	1	1	-	-	-	-	-	-	1	1	1	1	1
	DA60-20008A	Bolt Hex	SM30C, L42.6	4	4	4	4	4	4	4	4	4	4	4	4	4	4	4	4	4	4	4	4	4	4	4
16	DA63-10722A	Cover Relay	PP.,V451	1	1	1	1	1	1	1	1	1	1	1	1	1	1	1	1	1	1	1	1	1	1	1
17	DA63-40143A	Grommet Comp.	NBR,ID10,H9.7	4	4	4	4	4	4	4	4	4	4	4	4	4	4	4	4	4	4	4	4	4	4	4

NO	CODE-NO	Items	Specifications	SR-21/24NME - N-Safety									SR-21/24NME Safety								
				110~127V/60HZ			110~127V/60HZ			110~127V/60HZ			110~127V/60HZ			110~127V/60HZ			110~127V/60HZ		
				M	L	S	M	L	S	M	L	S	M	L	S	M	L	S	M	L	S
18	DA65-20113A	Clamp Cover Relay	SK,T0.5	1	1	1	1	1	1	1	1	1	1	1	1	1	1	1	1	1	1
19	DA71-60202A	Chassis Comp	SCP1	1	1	1	1	1	1	1	1	1	1	1	1	1	1	1	1	1	1
20	DA60-10124B	Screw Tap Tite	HH,m6L12,ZPC2-Y	2	2	2	2	2	2	2	2	2	2	2	2	2	2	2	2	2	2
21	6002-000470	Screw Tapping	TH,M4,L10,ZPC	1	1	1	1	1	1	1	1	1	1	1	1	1	1	1	1	1	1
22	DA67-40325B	Tray Drain Water	PP, NR	1	1	1	1	1	1	1	1	1	1	1	1	1	1	1	1	1	1
23	DA39-10156A	Cable Foam power	UCP2	-	-	-	1	1	1	-	-	-	-	-	-	-	-	-	-	-	-
	DA39-10139A	Cable Foam power	BF3	-	-	-	1	1	1	-	-	-	-	-	-	-	-	-	-	-	-
	DA39-10138A	Cable Foam power	EP2	1	1	1	-	-	-	1	1	1	1	1	1	1	1	1	1	1	1
	DA39-10172A	Cable Foam power	SPT3	1	1	1	-	-	-	1	1	1	1	1	1	1	1	1	1	1	1
	DA39-10105A	Cable Foam power	CP2	-	-	-	1	1	1	-	-	-	-	-	-	-	-	-	-	-	-
	DA39-10157A	Cable Foam power	AP3	-	-	-	-	-	-	-	-	-	1	1	1	-	-	-	1	1	1
	DA39-10160A	Cable Foam power	WSO13	-	-	-	-	-	-	1	1	1	-	-	-	1	1	1	-	-	-
24	6002-000470	Screw Tapping	TH,M4,L10, ZPC	2	2	2	2	2	2	2	2	2	2	2	2	2	2	2	2	2	2
25	DA67-10464E	Case Junction	PP	1	1	1	1	1	1	1	1	1	1	1	1	-	-	-	-	-	-
	DA67-10464D	Case Junction	PP,VO,Safety	-	-	-	-	-	-	-	-	-	-	-	-	1	1	1	1	1	1
26	DA45-10003C	Timer Deforrst	220-240V	-	-	-	1	1	1	1	1	1	1	1	1	1	1	1	1	1	1
	DA45-10003A	Timer Deforrst	110~127V	1	1	1	-	-	-	-	-	-	-	-	-	-	-	-	-	-	-
27	2501-000427	C-oil(Run)	3.2UF/350VAC																		
	2501-000278	C-oil(Start)	12UF/250VAC																		
28	DA63-40171B	Grommet Discharge	NR-ID4	1	1	1	1	1	1	1	1	1	1	1	1	1	1	1	1	1	1
29	DA63-40171D	Grommet Discharge	NR-ID6																		
30	DA73-30111A	Dryer	C122OT,OD18,85,ID4,75.L100	1	1	1	1	1	1	1	1	1	1	1	1	1	1	1	1	1	1

11-5 Assy-water dispenser parts



NO	CODE-NO	Items	Specifications	SR-21NME				SR-24NME				
				LG	MG	SW	TO	LG	MG	SW	TO	
1	DA91-00994B	Assy - Door Foam Fre	SR-21WME,N-KEY,LG	1	-	-	-	-	-	-	-	
	DA91-00994A	Assy - Door Foam Fre	SR-21WME,N-KEY,MG	-	1	-	-	-	-	-	-	
	DA91-01132B	Assy - Door Foam Fre	SR-21WME,N-KEY,SW	-	-	1	-	-	-	-	-	
		Assy - Door Foam Fre	SR-21WME,N-KEY,TO	-	-	-	1	-	-	-	1	
	DA90-00770B	Assy - Door Foam Ref	SR-21WME,N-KEY,LG	1	-	-	-	-	-	-	-	
	DA90-00554G	Assy - Door Foam Ref	SR-21WME,N-KEY,MG	-	1	-	-	-	-	-	-	
	DA90-00770C	Assy - Door Foam Ref	SR-21WME,N-KEY,SW	-	-	1	-	-	-	-	-	
		Assy - Door Foam Fre	SR-21WME,N-KEY,TO	-	-	-	1	-	-	-	1	
	DA91-00994C	Assy - Door Foam Fre	SR-24WME,N-KEY,LG	-	-	-	-	1	-	-	-	
	DA91-00994D	Assy - Door Foam Fre	SR-24WME,N-KEY,MG	-	-	-	-	-	1	-	-	
	DA91-01132D	Assy - Door Foam Fre	SR-24WME,N-KEY,SW	-	-	-	-	-	-	1	-	
		Assy - Door Foam Fre	SR-21WME,N-KEY,TO	-	-	-	1	-	-	-	1	
	DA90-00554H	Assy - Door Foam Ref	SR-24WME,N-KEY,LG	-	-	-	-	1	-	-	-	
	DA90-00774B	Assy - Door Foam Ref	SR-24WME,N-KEY,MG	-	-	-	-	-	1	-	-	
	DA90-00774C	Assy - Door Foam Ref	SR-24WME,N-KEY,SW	-	-	-	-	-	-	1	-	
		Assy - Door Foam Ref	SR-21WME,N-KEY,TO	-	-	1	-	-	-	-	1	
2	DA67-00364A	Hose-water, font	SR-21/24WME,NBR,BLK	1	1	1	1	1	1	1	1	
3	DA63-00517A	Cover-dispenser	SR-21/24WME,ABS,LG	1	-	-	-	1	-	-	-	
	DA63-00517B	Cover-dispenser	SR-21/24WME,ABS,MG	-	1	-	-	-	1	-	-	
	DA63-00517L	Cover-dispenser	SR-21/24WME,ABS,SW	-	-	1	-	-	-	1	-	
	DA63-00517L	Cover-dispenser	SR-21/24WME,ABS,TO	-	-	-	1	-	-	-	1	
4	DA63-00518A	Cover-button	SR-21/24WME,ABS,GRY	1	1	1	1	1	1	1	1	
5	DA64-00267A	Button-switch	SR-21/24WME,NY-66,NTR	1	1	1	1	1	1	1	1	
6	DA39-00137A	W/H-dispenser	SR-21/24WME	1	1	1	1	1	1	1	1	
7	6003-000334	Screw-tap,TH	SR-21/24WME,M3*8	3	3	3	3	3	3	3	3	
8	6002-000526	Screw-tap,TH	SR-21/24WME,M4*12	1	1	1	1	1	1	1	1	
9	6002-000367A	CAP-SCREW	SR-21/24WME,ABS,LG	1	-	-	-	1	-	-	-	
	6002-000367F	CAP-SCREW	SR-21/24WME,ABS,MG	-	1	-	-	-	1	-	-	
	6002-000367L	CAP-SCREW	SR-21/24WME,ABS,SW	-	-	1	-	-	-	1	-	
	6002-000367H	CAP-SCREW	SR-21/24WME,ABS,TO	-	-	-	1	-	-	-	1	
10	DA67-00415A	Hose-connect, b	SR-21/24WME,NBR	1	1	1	1	1	1	1	1	
11	DA61-00168A	Bracket-motor	SR-21/24WME,SBHG1	1	1	1	1	1	1	1	1	
12	DA66-00123A	Motor-pump, assy	SR-21/24WME,	1	1	1	1	1	1	1	1	
13	6002-000526	Screw-tap, TH	SR-21/24WME,M4*12	7	7	7	7	7	7	7	7	
14	DA63-00519A	Cover-moter	SR-21/24WME,HIPS,WHT	1	1	1	1	1	1	1	1	
15	DA67-00365A	Hose-water line, b	SR-21WME,NTR	1	1	1	1	-	-	-	-	

NO	CODE-NO	Items	Specifications	SR-21NME				SR-24NME				
				LG	MG	SW	TO	LG	MG	SW	TO	
	DA67-00365B	Hose-water line, b	SR-21WME,NTR	-	-	-	-	1	1	1	1	
16	DA61-00173A	Case-water tank	SR-21/24WME	1	1	1	1	1	1	1	1	
17	DA63-00524A	Cover-water tank	SR-21/24WME	1	1	1	1	1	1	1	1	
18	DA67-00410A	Hose-water line,c	SR-21/24WME	1	1	1	1	1	1	1	1	
19	DA62-00026A	Filter-qater line,c	SR-21/24WME	1	1	1	1	1	1	1	1	
20	DA63-00522A	Cover-water dispenser	SR-21/24WME	1	1	1	1	1	1	1	1	
21	DA41-00067A	PBA-MAIN	SR-21/24WME	1	1	1	1	1	1	1	1	
22	DA61-00170A	Case-junction	SR-21/24WME	1	1	1	1	1	1	1	1	

MEMO

