

## SECTION 8 EXPLODED VIEWS

**Note:**

- -XX and -X mean standardized parts, so they may have some difference from the original one.
- Items marked "\*" are not stocked since they are seldom required for routine service. Some delay should be anticipated when ordering these items.
- The mechanical parts with no reference number in the exploded views are not supplied.

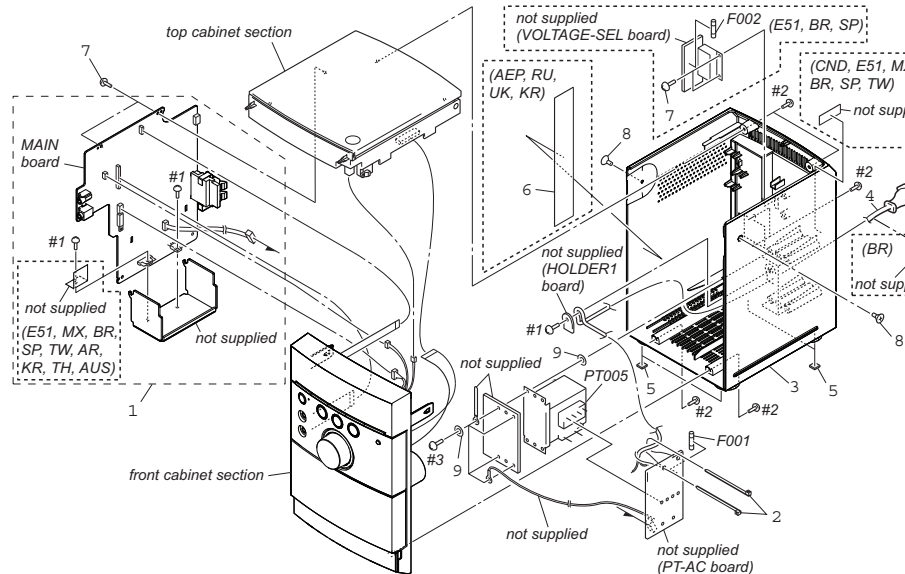
- Color Indication of Appearance Parts Example:  
KNOB, BALANCE (WHITE) . . . (RED)
- Accessories are given in the last of the electrical parts list.
- Abbreviation  
AR : Argentina model  
AUS : Australian model  
BR : Brazilian model  
CND : Canadian model  
E51 : Chilean and Peruvian model  
KR : Korean model

- MX : Mexican model
- RU : Russian model
- SP : Singapore model
- TH : Thai model
- TW : Taiwan model

The components identified by mark  $\Delta$  or dotted line with mark  $\Delta$  are critical for safety. Replace only with part number specified.

Les composants identifiés par une marque  $\Delta$  sont critiques pour la sécurité. Ne les remplacer que par une pièce portant le numéro spécifié.

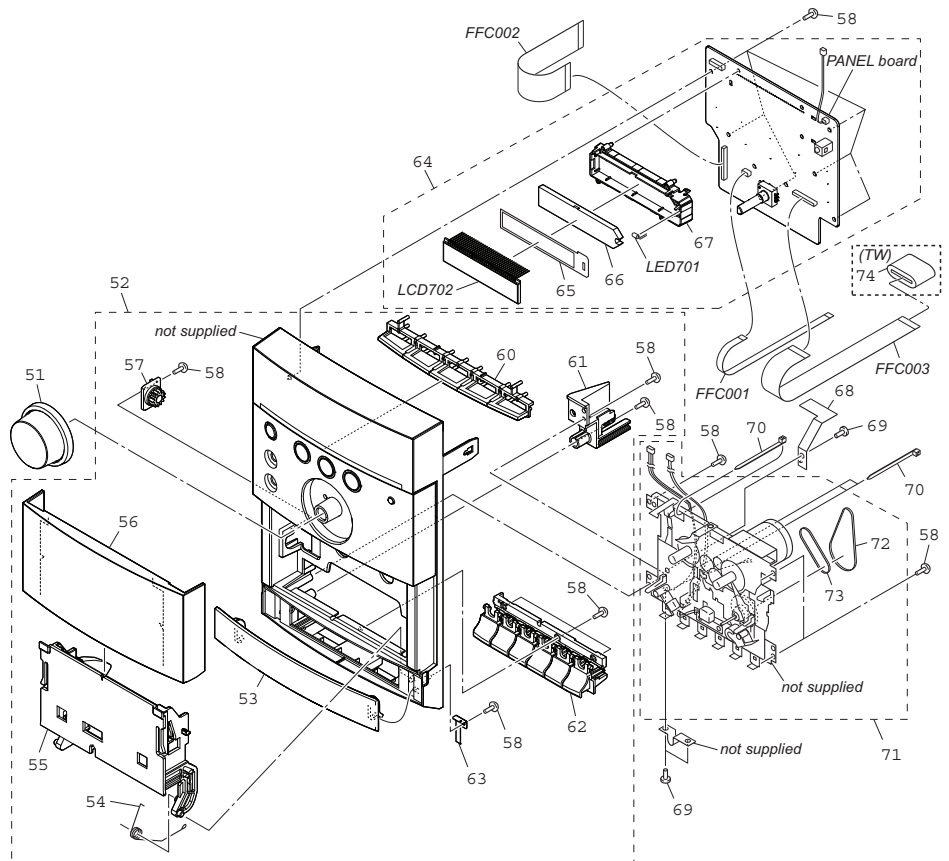
### 8-1. OVERALL SECTION



Ref. No.	Part No.	Description	Remark	Ref. No.	Part No.	Description	Remark
1	A-1508-439-A	MAIN BOARD, COMPLETE (AEP, UK)		$\Delta$ 4	1-833-218-21	POWER-SUPPLY CORD (BR)	
1	A-1508-519-A	MAIN BOARD, COMPLETE (CND)		$\Delta$ 4	1-834-697-21	CORD, POWER (TH)	
1	A-1508-544-A	MAIN BOARD, COMPLETE (AR, AUS)		$\Delta$ 4	1-834-966-31	CORD, POWER (AEP, UK)	
1	A-1508-664-A	MAIN BOARD, COMPLETE (E51, SP)		5	3-198-753-11	FOOT (FELT)	
1	A-1508-703-A	MAIN BOARD, COMPLETE (KR, TH)		6	3-700-085-01	SHEET, COPPER LEAF (AEP, RU, UK, KR)	
1	A-1508-735-A	MAIN BOARD, COMPLETE (MX, TW)		7	3-087-053-01	+BVTP2.6 (3CR)	
1	A-1542-780-A	MAIN BOARD, COMPLETE (RU)		8	2-580-644-01	SCREW, +KTP2 3X8	
1	A-1547-015-A	MAIN BOARD, COMPLETE (BR)		9	3-572-085-00	WASHER, FIBER	
2	4-147-421-01	HOLDER, WIRE		$\Delta$ F001	1-532-275-33	FUSE (T160mAL/250V)	(AEP, RU, UK, AR, KR, TH)
3	3-287-571-01	CABINET, REAR (AEP, RU, UK, TW, AR, KR, TH, AUS)		$\Delta$ F001	1-532-467-33	FUSE (T315mAL/250V)	(CND, E51, MX, BR, S)
3	3-287-571-11	CABINET, REAR (CND)		$\Delta$ F002	1-532-275-33	FUSE (T160mAL/250V) (E51, BR, SP)	
3	3-287-571-21	CABINET, REAR (E51, SP)		$\Delta$ PT005	1-445-421-11	TRANSFORMER, POWER (AR, KR, TH)	
3	3-287-571-31	CABINET, REAR (MX)		$\Delta$ PT005	1-445-422-11	TRANSFORMER, POWER (AEP, RU, UK)	
3	3-287-571-51	CABINET, REAR (BR)		$\Delta$ PT005	1-445-423-11	TRANSFORMER, POWER (E51, SP, AUS)	
$\Delta$ 4	1-769-079-71	AC POWER-SUPPLY CORD (KR)		$\Delta$ PT005	1-445-424-11	TRANSFORMER, POWER (CND, MX, TW)	
$\Delta$ 4	1-775-790-81	CORD, POWER (AUS)		$\Delta$ PT005	1-445-513-11	TRANSFORMER, POWER (BR)	
$\Delta$ 4	1-790-757-52	CORD, POWER (CND, MX)		#1	7-685-646-79	SCREW +BVTP 3X8 TYPE2 IT-3	
$\Delta$ 4	1-827-597-81	CORD, POWER (TW)		#2	7-685-647-79	SCREW +BVTP 3X10 TYPE2 IT-3	
$\Delta$ 4	1-830-891-11	CORD, POWER (E51, SP, RU)		#3	7-685-649-79	SCREW +BVTP 3X14 TYPE2 IT-3	
$\Delta$ 4	1-832-228-11	CORD, POWER (AR)					

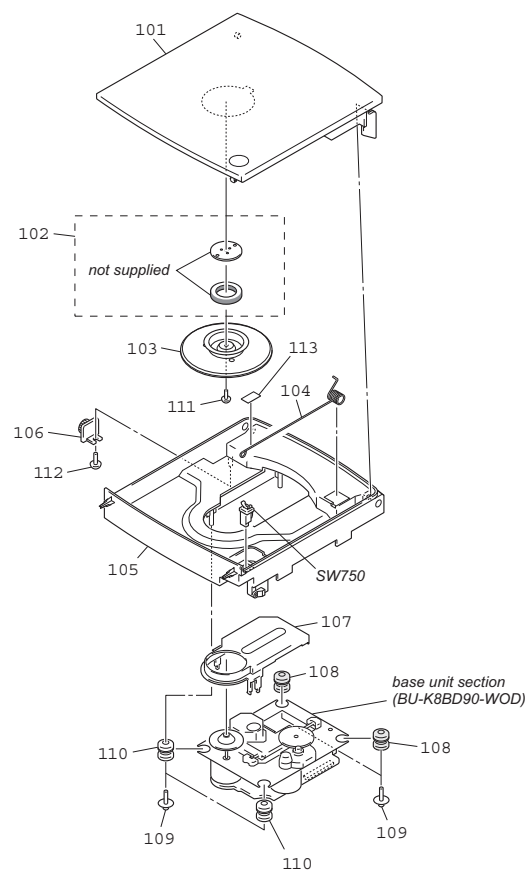
HCD-EH15  
Ver. 1.2

8-2. FRONT CABINET SECTION



Ref. No.	Part No.	Description	Remark	Ref. No.	Part No.	Description	Remark
51	3-280-084-01	KNOB (VOL)		65	2-636-545-01	SHEET (LCD)	
52	A-1508-461-A	CABINET ASSY, FRONT (EXCEPT AEP, RU, UK)		66	2-636-532-01	ILLUMINATOR (LCD)	
52	A-1518-789-A	CABINET ASSY, FRONT (AEP, UK)		67	2-636-531-01	HOLDER (LCD)	
52	A-1551-700-A	CABINET ASSY, FRONT (RU)		68	2-636-546-01	LEVER (REC)	
53	3-280-079-01	BUTTON COVER (C)		69	3-254-022-01	SCREW	
54	4-113-945-01	SPRING (CASSETTE)		70	4-147-421-01	HOLDER, WIRE	
55	3-288-035-01	HOLDER (CASSETTE)		71	A-1771-034-B	MF-EH15 (TAPE MECHANISM DECK)	
56	3-280-077-01	LID, CASSETTE		72	2-670-389-01	BELT (1)	
57	3-047-468-62	DAMPER		73	3-214-817-01	BELT (FR)	
58	3-087-053-01	+BVTP2.6 (3CR)		74	1-457-413-11	CORE, FERRITE (TW)	
60	3-280-083-02	BUTTON (OPERATION)		FFC001	1-832-796-21	CABLE, FLEXIBLE FLAT (5 CORE) (RU)	
61	2-636-524-01	HOLDER, PWB		FFC001	1-832-797-21	CABLE, FLEXIBLE FLAT (5 CORE)	(EXCEPT AEP, RU, UK)
62	3-280-081-01	BUTTON (CASSETTE)	(●▶▶▶◀◀◀▲■▶▶▶)	FFC001	1-832-807-21	CABLE, FLEXIBLE FLAT (7 CORE) (AEP, UK)	
63	3-280-088-01	SPRING (C-BUTTON LID)		FFC002	1-832-854-21	CABLE, FLEXIBLE FLAT (17 CORE)	
64	A-1508-455-A	PANEL BOARD, COMPLETE (AEP, UK)		FFC003	1-832-749-21	CABLE, FLEXIBLE FLAT (21 CORE) (TW)	
64	A-1508-530-A	PANEL BOARD, COMPLETE (CND, BR)		FFC003	1-835-211-21	CABLE, FLEXIBLE FLAT (EXCEPT TW)	
64	A-1508-558-A	PANEL BOARD, COMPLETE (SP, TW, KR, TH)		LCD702	1-802-381-11	DISPLAY PANEL, LIQUID CRYSTAL	
64	A-1508-593-A	PANEL BOARD, COMPLETE (E51, MX, AR)		LED701	6-502-498-01	LED SELU2B10A-SLF62FGH (LCD BACK LIGHT)	
64	A-1527-693-A	PANEL BOARD, COMPLETE (AUS)					
64	A-1542-781-A	PANEL BOARD, COMPLETE (RU)					

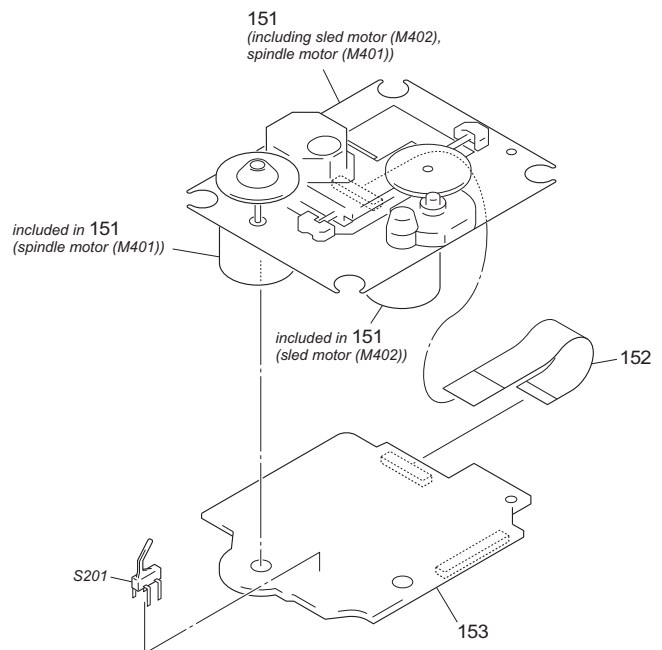
8-3. TOP CABINET SECTION



Ref. No.	Part No.	Description	Remark	Ref. No.	Part No.	Description	Remark
101	2-636-518-21	LID, CD		109	3-252-828-01	SCREW (B2.6), (+) PWH TAPPING	
102	1-452-899-11	MAGNET		110	3-931-379-31	RUBBER, VIBRATION PROOF (GREEN)	
103	3-019-395-01	PLATE, CHUCKING		111	3-253-143-01	SCREW (B2.6), (+) P TAPPING	
104	2-637-769-01	SPRING (CD)		112	3-087-053-01	+BVTP2.6 (3CR)	
105	2-636-515-02	CABINET, TOP		113	2-675-085-01	SPACER	
106	3-047-468-11	DAMPER		SW750	1-692-960-11	SWITCH, PUSH (1 KEY)	
107	4-247-493-01	COVER, CD				(CD LID OPEN/CLOSE D	
108	3-931-379-21	RUBBER, VIBRATION PROOF (RED)					

## HCD-EH15

### 8-4. BASE UNIT SECTION (BU-K8BD90-WOD)



Ref. No.	Part No.	Description	Remark	Ref. No.	Part No.	Description	Remark
△ 151	8-820-126-02	OPTICAL PICK-UP BLOCK (KSM-213CDP/C2NP) (Including spindle motor (M401), sled motor (M402))		153	A-1217-914-A	CD BOARD, COMPLETE	
152	1-834-268-21	WIRE (FLAT TYPE) (16 CORE)		S201	1-771-853-11	SWITCH, DETECTION (LIMIT)	

## SECTION 9 ELECTRICAL PARTS LIST

**Note:**

- Due to standardization, replacements in the parts list may be different from the parts specified in the diagrams or the components used on the set.
- -XX and -X mean standardized parts, so they may have some difference from the original one.
- Items marked "\*" are not stocked since they are seldom required for routine service. Some delay should be anticipated when ordering these items.
- CAPACITORS  
uF:  $\mu$ F
- COILS  
uH:  $\mu$ H

- RESISTORS  
All resistors are in ohms.  
METAL: Metal-film resistor.  
METAL OXIDE: Metal oxide-film resistor.  
F: nonflammable
- SEMICONDUCTORS  
In each case, u:  $\mu$ , for example:  
uA. . . :  $\mu$ A. . . , uPA. . . ,  $\mu$ PA. . .  
uPB. . . :  $\mu$ PB. . . , uPC. . . ,  $\mu$ PC. . .  
uPD. . . :  $\mu$ PD. . .
- Abbreviation  
AR : Argentina model  
AUS : Australian model  
BR : Brazilian model  
CND : Canadian model  
E51 : Chilean and Peruvian model  
KR : Korean model

- MX : Mexican model
- RU : Russian model
- SP : Singapore model
- TH : Thai model
- TW : Taiwan model

When indicating parts by reference number, please include the board name.

The components identified by mark  $\Delta$  or dotted line with mark  $\Delta$  are critical safety.  
Replace only with part number specified.

Les composants identifiés par une marque  $\Delta$  sont critiques pour la sécurité.  
Ne les remplacer que par une pièce portant le numéro spécifié.

Ref. No.	Part No.	Description	Remark	Ref. No.	Part No.	Description	Remark
	A-1217-914-A	CD BOARD, COMPLETE *****		C147	1-107-826-11	CERAMIC CHIP 0.1uF 10%	16V
		< CAPACITOR >		C148	1-162-923-11	CERAMIC CHIP 47PF 5%	50V
C100	1-164-360-11	CERAMIC CHIP 0.1uF	16V	C149	1-162-919-11	CERAMIC CHIP 22PF 5%	50V
C101	1-164-360-11	CERAMIC CHIP 0.1uF	16V	C150	1-162-964-11	CERAMIC CHIP 0.001uF 10%	50V
C102	1-164-360-11	CERAMIC CHIP 0.1uF	16V	C151	1-164-315-11	CERAMIC CHIP 470PF 5%	50V
C103	1-164-360-11	CERAMIC CHIP 0.1uF	16V	C152	1-164-315-11	CERAMIC CHIP 470PF 5%	50V
C104	1-164-360-11	CERAMIC CHIP 0.1uF	16V	C153	1-164-360-11	CERAMIC CHIP 0.1uF	16V
C105	1-164-360-11	CERAMIC CHIP 0.1uF	16V	C201	1-128-995-21	ELECT CHIP 100uF 20%	10V
C106	1-128-995-21	ELECT CHIP 100uF	20% 10V	C202	1-128-995-21	ELECT CHIP 100uF 20%	10V
C107	1-164-360-11	CERAMIC CHIP 0.1uF	16V	C204	1-164-360-11	CERAMIC CHIP 0.1uF	16V
C108	1-164-360-11	CERAMIC CHIP 0.1uF	16V	C205	1-164-360-11	CERAMIC CHIP 0.1uF	16V
C109	1-164-360-11	CERAMIC CHIP 0.1uF	16V	C206	1-165-908-11	CERAMIC CHIP 1uF 10%	10V
C110	1-164-360-11	CERAMIC CHIP 0.1uF	16V	C207	1-165-908-11	CERAMIC CHIP 1uF 10%	10V
C112	1-164-360-11	CERAMIC CHIP 0.1uF	16V	C301	1-164-360-11	CERAMIC CHIP 0.1uF	16V
C113	1-164-360-11	CERAMIC CHIP 0.1uF	16V	C302	1-137-710-91	CERAMIC CHIP 10uF 20%	6.3V
C115	1-124-778-00	ELECT CHIP 22uF	20% 6.3V	C303	1-137-710-91	CERAMIC CHIP 10uF 20%	6.3V
C116	1-164-360-11	CERAMIC CHIP 0.1uF	16V	C306	1-128-995-21	ELECT CHIP 100uF 20%	10V
C117	1-164-227-11	CERAMIC CHIP 0.022uF	10% 25V	C307	1-165-908-11	CERAMIC CHIP 1uF 10%	10V
C118	1-162-970-11	CERAMIC CHIP 0.01uF	10% 25V	C309	1-162-964-11	CERAMIC CHIP 0.001uF 10%	50V
C119	1-164-227-11	CERAMIC CHIP 0.022uF	10% 25V	C401	1-128-394-11	ELECT CHIP 220uF 20%	10V
C120	1-162-970-11	CERAMIC CHIP 0.01uF	10% 25V	C403	1-164-360-11	CERAMIC CHIP 0.1uF	16V
C122	1-164-315-11	CERAMIC CHIP 470PF	5% 50V	C404	1-164-360-11	CERAMIC CHIP 0.1uF	16V
C123	1-164-315-11	CERAMIC CHIP 470PF	5% 50V	C405	1-164-360-11	CERAMIC CHIP 0.1uF	16V
C124	1-162-968-11	CERAMIC CHIP 0.0047uF	10% 50V			< CONNECTOR >	
C125	1-162-968-11	CERAMIC CHIP 0.0047uF	10% 50V	CN201	1-784-833-51	CONNECTOR, FFC (LIF (NON-ZIF)) 21P	
C126	1-107-826-11	CERAMIC CHIP 0.1uF	10% 16V	CN301	1-770-425-51	CONNECTOR, FFC/FPC 16P	
C127	1-162-966-11	CERAMIC CHIP 0.0022uF	10% 50V			< IC >	
C128	1-162-910-11	CERAMIC CHIP 5PF	0.25PF 50V	IC101	6-709-624-01	IC TC94A70FG-006	
C130	1-162-910-11	CERAMIC CHIP 5PF	0.25PF 50V	IC201	6-710-808-01	IC TK63115SCL-G@GT	
C132	1-164-360-11	CERAMIC CHIP 0.1uF	16V	IC401	6-710-637-01	IC BA5826HFP-E2	
C133	1-107-826-11	CERAMIC CHIP 0.1uF	10% 16V			< TRANSISTOR >	
C136	1-162-923-11	CERAMIC CHIP 47PF	5% 50V	Q301	6-551-120-01	TRANSISTOR 2SA2119K	
C137	1-162-970-11	CERAMIC CHIP 0.01uF	10% 25V			< RESISTOR >	
C138	1-164-315-11	CERAMIC CHIP 470PF	5% 50V	R101	1-216-813-11	METAL CHIP 220 5%	1/10
C139	1-162-970-11	CERAMIC CHIP 0.01uF	10% 25V	R102	1-216-833-11	METAL CHIP 10K 5%	1/10
C140	1-162-970-11	CERAMIC CHIP 0.01uF	10% 25V	R104	1-216-295-91	SHORT CHIP 0	
C141	1-162-966-11	CERAMIC CHIP 0.0022uF	10% 50V	R105	1-216-857-11	METAL CHIP 1M 5%	1/10
C142	1-107-826-11	CERAMIC CHIP 0.1uF	10% 16V	R106	1-216-821-11	METAL CHIP 1K 5%	1/10
C143	1-162-970-11	CERAMIC CHIP 0.01uF	10% 25V	R108	1-216-864-11	SHORT CHIP 0	
C144	1-107-826-11	CERAMIC CHIP 0.1uF	10% 16V	R110	1-216-833-11	METAL CHIP 10K 5%	1/10
C145	1-162-970-11	CERAMIC CHIP 0.01uF	10% 25V				
C146	1-164-315-11	CERAMIC CHIP 470PF	5% 50V				

# HCD-EH15

Ver. 1.2

CD MAIN

Ref. No.	Part No.	Description			Remark	Ref. No.	Part No.	Description			Remark
R111	1-216-809-11	METAL CHIP	100	5%	1/10W			< VIBRATOR >			
R112	1-216-809-11	METAL CHIP	100	5%	1/10W						
R113	1-216-833-11	METAL CHIP	10K	5%	1/10W	X102	1-795-101-21	VIBRATOR, CERAMIC (16.9344MHz)			
R114	1-216-833-11	METAL CHIP	10K	5%	1/10W	*****					
R118	1-216-845-11	METAL CHIP	100K	5%	1/10W			A-1508-439-A	MAIN BOARD, COMPLETE (UK)		
R120	1-216-864-11	SHORT CHIP	0					A-1508-519-A	MAIN BOARD, COMPLETE (CND)		
R125	1-216-864-11	SHORT CHIP	0					A-1508-544-A	MAIN BOARD, COMPLETE (AR, AUS)		
R126	1-216-864-11	SHORT CHIP	0					A-1508-664-A	MAIN BOARD, COMPLETE (E51, SP)		
								A-1508-703-A	MAIN BOARD, COMPLETE (KR)		
R127	1-216-864-11	SHORT CHIP	0					A-1508-735-A	MAIN BOARD, COMPLETE (MX, TW)		
R128	1-216-853-11	METAL CHIP	470K	5%	1/10W			A-1542-780-A	MAIN BOARD, COMPLETE (RU)		
R129	1-216-821-11	METAL CHIP	1K	5%	1/10W			*****			
R130	1-216-829-11	METAL CHIP	4.7K	5%	1/10W			7-685-646-79	SCREW +BVTP 3X8 TYPE2 N-S		
R134	1-216-857-11	METAL CHIP	1M	5%	1/10W			< BAND PASS FILTER >			
R135	1-216-853-11	METAL CHIP	470K	5%	1/10W			BPF801	1-236-711-21	FILTER, BAND PASS	
R136	1-216-837-11	METAL CHIP	22K	5%	1/10W			< CAPACITOR/RESISTOR >			
R139	1-216-841-11	METAL CHIP	47K	5%	1/10W			C101	1-128-549-11	ELECT 3300uF 20%	35V
R140	1-216-864-11	SHORT CHIP	0					C105	1-100-566-91	CERAMIC CHIP 0.1uF 10%	25V
R142	1-216-837-11	METAL CHIP	22K	5%	1/10W			C105	1-117-863-11	CERAMIC CHIP 0.47uF 10%	6.3V
R143	1-216-841-11	METAL CHIP	47K	5%	1/10W			C109	1-162-970-11	CERAMIC CHIP 0.01uF 10%	25V
R144	1-216-837-11	METAL CHIP	22K	5%	1/10W			C110	1-115-467-11	CERAMIC CHIP 0.22uF 10%	10V
R145	1-216-864-11	SHORT CHIP	0					C111	1-164-156-11	CERAMIC CHIP 0.1uF	25V
R146	1-216-864-11	SHORT CHIP	0					C113	1-126-953-11	ELECT 2200uF 20%	35V
R147	1-216-864-11	SHORT CHIP	0					C114	1-100-566-91	CERAMIC CHIP 0.1uF	10%
R148	1-216-864-11	SHORT CHIP	0					C115	1-164-156-11	CERAMIC CHIP 0.1uF	25V
R149	1-216-864-11	SHORT CHIP	0					C118	1-126-933-11	ELECT 100uF 20%	16V
R150	1-216-864-11	SHORT CHIP	0					C121	1-117-863-11	CERAMIC CHIP 0.47uF	10%
R151	1-216-864-11	SHORT CHIP	0					C122	1-126-923-91	ELECT 220uF	20%
R153	1-216-857-11	METAL CHIP	1M	5%	1/10W			C141	1-162-970-11	CERAMIC CHIP 0.01uF	10%
R154	1-216-857-11	METAL CHIP	1M	5%	1/10W			C142	1-162-970-11	CERAMIC CHIP 0.01uF	10%
R155	1-216-805-11	METAL CHIP	47	5%	1/10W			C155	1-165-621-91	CERAMIC CHIP 0.1uF	50V
R156	1-216-809-11	METAL CHIP	100	5%	1/10W			C156	1-165-621-91	CERAMIC CHIP 0.1uF	50V
R157	1-216-809-11	METAL CHIP	100	5%	1/10W			C181	1-164-156-11	CERAMIC CHIP 0.1uF	25V
R201	1-216-295-91	SHORT CHIP	0					C182	1-164-156-11	CERAMIC CHIP 0.1uF	25V
R202	1-216-295-91	SHORT CHIP	0					C183	1-164-156-11	CERAMIC CHIP 0.1uF	25V
R203	1-216-809-11	METAL CHIP	100	5%	1/10W			C184	1-164-156-11	CERAMIC CHIP 0.1uF	25V
R204	1-216-809-11	METAL CHIP	100	5%	1/10W			C187	1-216-829-11	METAL CHIP 4.7K	5%
R205	1-216-809-11	METAL CHIP	100	5%	1/10W			C188	1-216-829-11	METAL CHIP 4.7K	5%
R206	1-216-809-11	METAL CHIP	100	5%	1/10W			C189	1-100-566-91	CERAMIC CHIP 0.1uF	10%
R207	1-216-809-11	METAL CHIP	100	5%	1/10W			C190	1-126-964-11	ELECT 10uF	20%
R208	1-216-809-11	METAL CHIP	100	5%	1/10W			C191	1-100-566-91	CERAMIC CHIP 0.1uF	10%
R209	1-216-809-11	METAL CHIP	100	5%	1/10W			C192	1-100-566-91	CERAMIC CHIP 0.1uF	10%
R210	1-216-809-11	METAL CHIP	100	5%	1/10W			C193	1-100-566-91	CERAMIC CHIP 0.1uF	10%
R211	1-216-809-11	METAL CHIP	100	5%	1/10W			C194	1-100-566-91	CERAMIC CHIP 0.1uF	10%
R212	1-216-809-11	METAL CHIP	100	5%	1/10W			C196	1-100-566-91	CERAMIC CHIP 0.1uF	10%
R218	1-216-845-11	METAL CHIP	100K	5%	1/10W			C197	1-100-566-91	CERAMIC CHIP 0.1uF	10%
R219	1-216-845-11	METAL CHIP	100K	5%	1/10W			C198	1-100-566-91	CERAMIC CHIP 0.1uF	10%
R220	1-216-845-11	METAL CHIP	100K	5%	1/10W			C199	1-126-923-91	ELECT 220uF	20%
R221	1-216-845-11	METAL CHIP	100K	5%	1/10W			C301	1-162-966-11	CERAMIC CHIP 0.0022uF	10%
R222	1-216-845-11	METAL CHIP	100K	5%	1/10W			C302	1-162-964-11	CERAMIC CHIP 0.001uF	10%
R223	1-216-845-11	METAL CHIP	100K	5%	1/10W			C303	1-126-963-11	ELECT 4.7uF	20%
R301	1-216-845-11	METAL CHIP	100K	5%	1/10W			C304	1-126-933-11	ELECT 100uF	20%
R302	1-216-864-11	SHORT CHIP	0					C305	1-126-960-11	ELECT 1uF	20%
R303	1-216-789-11	METAL CHIP	2.2	5%	1/10W			C306	1-126-960-11	ELECT 1uF	20%
R304	1-216-789-11	METAL CHIP	2.2	5%	1/10W			C307	1-126-767-11	ELECT 1000uF	20%
R402	1-216-825-11	METAL CHIP	2.2K	5%	1/10W			C308	1-126-767-11	ELECT 1000uF	20%
R405	1-216-833-11	METAL CHIP	10K	5%	1/10W						
R408	1-216-825-11	METAL CHIP	2.2K	5%	1/10W						
R414	1-216-829-11	METAL CHIP	4.7K	5%	1/10W						
R415	1-216-841-11	METAL CHIP	47K	5%	1/10W						

Note: Refer to supplement-1 for MAIN board (AEP, Brazilian and Thai models).

Ref. No.	Part No.	Description	Remark	Ref. No.	Part No.	Description	Remark
C309	1-162-964-11	CERAMIC CHIP	0.001uF 10% 50V	C544	1-162-964-11	CERAMIC CHIP	0.001uF 10% 50V
C310	1-162-964-11	CERAMIC CHIP	0.001uF 10% 50V	C561	1-162-966-11	CERAMIC CHIP	0.0022uF 10% 50V
C311	1-162-962-11	CERAMIC CHIP	470PF 10% 50V	C562	1-162-966-11	CERAMIC CHIP	0.0022uF 10% 50V
C312	1-162-962-11	CERAMIC CHIP	470PF 10% 50V	C564	1-162-970-11	CERAMIC CHIP	0.01uF 10% 25V
C315	1-162-964-11	CERAMIC CHIP	0.001uF 10% 50V	C565	1-115-156-11	CERAMIC CHIP	1uF 10% 50V
C371	1-164-156-11	CERAMIC CHIP	0.1uF 10% 25V	C567	1-130-479-00	MYLAR	0.0047uF 5% 50V
C381	1-162-964-11	CERAMIC CHIP	0.001uF 10% 50V	C800	1-164-156-11	CERAMIC CHIP	0.1uF 10% 25V
C382	1-162-970-11	CERAMIC CHIP	0.01uF 10% 25V	C801	1-126-933-11	ELECT	100uF 20% 16V
C401	1-126-956-91	ELECT	0.1uF 20% 50V	C802	1-100-566-91	CERAMIC CHIP	0.1uF 10% 25V
C402	1-126-933-11	ELECT	100uF 20% 16V	C803	1-162-970-11	CERAMIC CHIP	0.01uF 10% 25V
C403	1-100-566-91	CERAMIC CHIP	0.1uF 10% 25V	C804	1-100-566-91	CERAMIC CHIP	0.1uF 10% 25V
C404	1-115-467-11	CERAMIC CHIP	0.22uF 10% 10V	C806	1-162-964-11	CERAMIC CHIP	0.001uF 10% 50V
C405	1-126-956-91	ELECT	0.1uF 20% 50V	C807	1-162-966-11	CERAMIC CHIP	0.0022uF 10% 50V
C406	1-115-467-11	CERAMIC CHIP	0.22uF 10% 10V	C809	1-100-566-91	CERAMIC CHIP	0.1uF 10% 25V
C407	1-162-968-11	CERAMIC CHIP	0.0047uF 10% 50V	C810	1-115-467-11	CERAMIC CHIP	0.22uF 10% 10V
C408	1-162-968-11	CERAMIC CHIP	0.0047uF 10% 50V	C811	1-164-156-11	CERAMIC CHIP	0.1uF 10% 25V
C409	1-100-566-91	CERAMIC CHIP	0.1uF 10% 25V	C812	1-164-156-11	CERAMIC CHIP	0.1uF 10% 25V
C410	1-100-566-91	CERAMIC CHIP	0.1uF 10% 25V	C813	1-126-923-91	ELECT	220uF 20% 10V
C412	1-126-933-11	ELECT	100uF 20% 16V	C814	1-164-156-11	CERAMIC CHIP	0.1uF 10% 25V
C413	1-126-933-11	ELECT	100uF 20% 16V	C815	1-162-927-11	CERAMIC CHIP	100PF 5% 50V
C415	1-100-566-91	CERAMIC CHIP	0.1uF 10% 25V	C816	1-115-467-11	CERAMIC CHIP	0.22uF 10% 10V
C416	1-100-566-91	CERAMIC CHIP	0.1uF 10% 25V	C817	1-100-566-91	CERAMIC CHIP	0.1uF 10% 25V
C421	1-100-566-91	CERAMIC CHIP	0.1uF 10% 25V	C818	1-216-864-11	SHORT CHIP	0
C431	1-126-960-11	ELECT	1uF 20% 50V	C819	1-162-964-11	CERAMIC CHIP	0.001uF 10% 50V
C432	1-126-960-11	ELECT	1uF 20% 50V	C820	1-162-964-11	CERAMIC CHIP	0.001uF 10% 50V
C433	1-162-962-11	CERAMIC CHIP	470PF 10% 50V	C821	1-165-176-11	CERAMIC CHIP	0.047uF 10% 16V
C434	1-162-962-11	CERAMIC CHIP	470PF 10% 50V	C822	1-162-962-11	CERAMIC CHIP	470PF 10% 50V
C437	1-162-962-11	CERAMIC CHIP	470PF 10% 50V	C823	1-162-918-11	CERAMIC CHIP	18PF 5% 50V
C438	1-162-962-11	CERAMIC CHIP	470PF 10% 50V	C824	1-162-918-11	CERAMIC CHIP	18PF 5% 50V
C501	1-162-923-11	CERAMIC CHIP	47PF 5% 50V	C825	1-125-837-91	CERAMIC CHIP	1uF 10% 6.3V
C502	1-162-923-11	CERAMIC CHIP	47PF 5% 50V	C826	1-162-927-11	CERAMIC CHIP	100PF 5% 50V
C503	1-162-962-11	CERAMIC CHIP	470PF 10% 50V	C827	1-162-927-11	CERAMIC CHIP	100PF 5% 50V
C504	1-162-962-11	CERAMIC CHIP	470PF 10% 50V	C828	1-162-927-11	CERAMIC CHIP	100PF 5% 50V
C505	1-165-176-11	CERAMIC CHIP	0.047uF 10% 16V	C829	1-162-970-11	CERAMIC CHIP	0.01uF 10% 25V
C506	1-165-176-11	CERAMIC CHIP	0.047uF 10% 16V	C830	1-162-970-11	CERAMIC CHIP	0.01uF 10% 25V
C507	1-162-970-11	CERAMIC CHIP	0.01uF 10% 25V	C831	1-117-863-11	CERAMIC CHIP	0.47uF 10% 6.3V
C508	1-162-970-11	CERAMIC CHIP	0.01uF 10% 25V	C832	1-117-863-11	CERAMIC CHIP	0.47uF 10% 6.3V
C509	1-126-966-11	ELECT	33uF 20% 50V	C833	1-117-863-11	CERAMIC CHIP	0.47uF 10% 6.3V
C510	1-126-966-11	ELECT	33uF 20% 50V	C834	1-126-923-91	ELECT	220uF 20% 10V
C511	1-162-962-11	CERAMIC CHIP	470PF 10% 50V	C835	1-115-467-11	CERAMIC CHIP	0.22uF 10% 10V
C512	1-162-962-11	CERAMIC CHIP	470PF 10% 50V	C836	1-115-467-11	CERAMIC CHIP	0.22uF 10% 10V
C513	1-162-964-11	CERAMIC CHIP	0.001uF 10% 50V	C838	1-100-566-91	CERAMIC CHIP	0.1uF 10% 25V
C514	1-162-964-11	CERAMIC CHIP	0.001uF 10% 50V	C839	1-100-566-91	CERAMIC CHIP	0.1uF 10% 25V
C515	1-162-923-11	CERAMIC CHIP	47PF 5% 50V	C840	1-117-863-11	CERAMIC CHIP	0.47uF 10% 6.3V
C518	1-164-156-11	CERAMIC CHIP	0.1uF 10% 25V	C841	1-126-965-91	ELECT	22uF 20% 50V
C519	1-164-156-11	CERAMIC CHIP	0.1uF 10% 25V	C843	1-162-960-11	CERAMIC CHIP	220PF 10% 50V
C522	1-162-927-11	CERAMIC CHIP	100PF 5% 50V	C847	1-162-968-11	CERAMIC CHIP	0.0047uF 10% 50V (EXCEPT U
C523	1-162-970-11	CERAMIC CHIP	0.01uF 10% 25V	C847	1-162-970-11	CERAMIC CHIP	0.01uF 10% 25V (EXCEPT U
C524	1-162-970-11	CERAMIC CHIP	0.01uF 10% 25V	C848	1-162-968-11	CERAMIC CHIP	0.0047uF 10% 50V (EXCEPT U
C525	1-162-970-11	CERAMIC CHIP	0.01uF 10% 25V	C848	1-162-970-11	CERAMIC CHIP	0.01uF 10% 25V (EXCEPT U
C526	1-162-970-11	CERAMIC CHIP	0.01uF 10% 25V	C851	1-165-176-11	CERAMIC CHIP	0.047uF 10% 16V
C527	1-162-964-11	CERAMIC CHIP	0.001uF 10% 50V	C852	1-162-915-11	CERAMIC CHIP	10PF 0.5PF 50V
C528	1-162-964-11	CERAMIC CHIP	0.001uF 10% 50V	C853	1-164-227-11	CERAMIC CHIP	0.022uF 10% 25V
C529	1-162-927-11	CERAMIC CHIP	100PF 5% 50V	C854	1-162-915-11	CERAMIC CHIP	10PF 0.5PF 50V
C531	1-162-964-11	CERAMIC CHIP	0.001uF 10% 50V	C855	1-162-962-11	CERAMIC CHIP	470PF 10% 50V
C532	1-162-964-11	CERAMIC CHIP	0.001uF 10% 50V	C856	1-162-910-11	CERAMIC CHIP	5PF 0.25PF 50V
C533	1-100-566-91	CERAMIC CHIP	0.1uF 10% 25V				
C534	1-100-566-91	CERAMIC CHIP	0.1uF 10% 25V				
C535	1-100-566-91	CERAMIC CHIP	0.1uF 10% 25V				
C543	1-162-964-11	CERAMIC CHIP	0.001uF 10% 50V				

Note: Refer to supplement-1 for MAIN board (AEP, Brazilian and Thai models).

# HCD-EH15

Ver. 1.2

MAIN

Ref. No.	Part No.	Description	Remark	Ref. No.	Part No.	Description	Remark
C861	1-100-566-91	CERAMIC CHIP 0.1uF	10% 25V (UK)	< JACK/TERMINAL BOARD >			
C862	1-100-566-91	CERAMIC CHIP 0.1uF	10% 25V (UK)	J101	1-780-314-11	TERMINAL BOARD (SPEAKER)	
C863	1-126-965-91	ELECT 22uF	20% 50V (UK)	J102	1-815-629-11	JACK (PHONES)	
C864	1-162-962-11	CERAMIC CHIP 470PF	10% 50V (UK)	J105	1-566-822-51	JACK (AUDIO IN)	
C865	1-126-965-91	ELECT 22uF	20% 50V (UK)	< JUMPER RESISTOR >			
C866	1-162-962-11	CERAMIC CHIP 470PF	10% 50V (UK)	JR101	1-216-864-11	SHORT CHIP 0 (KR)	
C867	1-162-962-11	CERAMIC CHIP 470PF	10% 50V (UK)	JR102	1-216-864-11	SHORT CHIP 0 (MX, TW)	
C868	1-162-925-11	CERAMIC CHIP 68PF	5% 50V (UK)	JR103	1-216-864-11	SHORT CHIP 0 (AR, AUS)	
C869	1-162-923-11	CERAMIC CHIP 47PF	5% 50V (UK)	JR104	1-216-864-11	SHORT CHIP 0 (E51, SP)	
C873	1-162-907-11	CERAMIC CHIP 2PF	0.25PF 50V	JR105	1-216-864-11	SHORT CHIP 0 (CND)	
< FILTER/CAPACITOR >				JR106	1-216-864-11	SHORT CHIP 0 (UK)	
CF801	1-795-426-11	FILTER, CERAMIC		JR107	1-216-864-11	SHORT CHIP 0 (RU)	
CF802	1-128-821-51	CERAMIC 1000PF	5% 50V (EXCEPT UK, RU)	JR401	1-216-864-11	SHORT CHIP 0	
CF802	1-579-554-21	FILTER, CERAMIC (UK, RU)		JR402	1-216-864-11	SHORT CHIP 0	
CF803	1-781-962-21	FILTER, CERAMIC		JR403	1-216-864-11	SHORT CHIP 0	
< CONNECTOR >				JR404	1-216-864-11	SHORT CHIP 0	
CN105	1-784-778-11	CONNECTOR, FFC 17P		JR801	1-216-864-11	SHORT CHIP 0	
CN106	1-784-766-11	CONNECTOR, FFC 5P (EXCEPT UK)		JR802	1-216-864-11	SHORT CHIP 0	
CN106	1-568-826-11	CONNECTOR, FFC 7P (UK)		JR803	1-216-864-11	SHORT CHIP 0	
CNP501	1-815-445-11	PIN, CONNECTOR (PWB) 4P		JR861	1-216-864-11	SHORT CHIP 0 (UK)	
CNP502	1-815-444-11	PIN, CONNECTOR (PWB) 3P		< RESISTOR >			
* CNP802	1-506-680-11	PLUG, CONNECTOR (2.5mm) 3P (ANTENNA FM/AM)		JW137	1-249-385-11	CARBON 2.2 5% 1/4W (CND)	
< DIODE >				< COIL/FERRITE BEAD >			
D106	6-501-172-01	DIODE UDZW-TE17-8.2B		L103	1-469-152-11	FERRITE, EMI (SMD) (2012)	
D107	6-502-411-01	DIODE RL202-B322-1		L104	1-410-509-11	INDUCTOR 10uH	
D108	6-502-411-01	DIODE RL202-B322-1		L501	1-456-094-11	TRANSFORMER, BIAS OSCILLATION	
D109	6-502-411-01	DIODE RL202-B322-1		L803	1-433-741-11	TRANSFORMER, IF	
D110	6-502-411-01	DIODE RL202-B322-1		L804	1-457-163-22	COIL, AIR-CORE	
D111	6-501-582-01	DIODE 1N4002-B5		L805	1-457-162-22	COIL, AIR-CORE	
D112	6-501-582-01	DIODE 1N4002-B5 (E51, SP)		L806	1-457-168-11	COIL, DET	
D113	6-501-582-01	DIODE 1N4002-B5		L851	1-457-161-11	COIL, AM ANTENNA	
D114	6-501-582-01	DIODE 1N4002-B5 (E51, SP)		L852	1-456-596-11	COIL, MW OSC	
D131	6-500-334-01	DIODE MC2836-T112-1		< TRANSISTOR >			
D193	6-500-335-01	DIODE MC2838-T112-1		Q101	8-729-024-93	TRANSISTOR 2SB1565E	
D371	6-500-335-01	DIODE MC2838-T112-1		Q102	8-729-120-28	TRANSISTOR 2SC1623-L5L6	
D372	6-500-335-01	DIODE MC2838-T112-1		Q103	8-729-120-28	TRANSISTOR 2SC1623-L5L6	
D802	6-501-369-01	DIODE SVC230-TB-E		Q121	8-729-120-28	TRANSISTOR 2SC1623-L5L6	
D803	6-501-369-01	DIODE SVC230-TB-E		Q122	8-729-120-28	TRANSISTOR 2SC1623-L5L6	
D812	6-501-579-01	DIODE MC2837		Q123	8-729-120-28	TRANSISTOR 2SC1623-L5L6	
D813	6-501-579-01	DIODE MC2837		Q191	8-729-036-86	TRANSISTOR KTC3203Y-AT	
D815	6-501-579-01	DIODE MC2837		Q192	8-729-036-86	TRANSISTOR KTC3203Y-AT	
D851	6-501-142-01	DIODE SVC347A-TL-E		Q193	6-551-696-01	TRANSISTOR ISA1235AC1TP-1EF	
< FERRITE BEAD >				Q194	8-729-037-13	TRANSISTOR KTA1271Y	
FB101	1-469-152-11	FERRITE, EMI (SMD) (2012)		Q195	8-729-120-28	TRANSISTOR 2SC1623-L5L6	
FB102	1-469-152-11	FERRITE, EMI (SMD) (2012)		Q351	6-551-703-01	FET 2SJ599-ZK-E1-AZ	
FB103	1-469-152-11	FERRITE, EMI (SMD) (2012)		Q352	8-729-120-28	TRANSISTOR 2SC1623-L5L6	
< IC >				Q371	6-551-696-01	TRANSISTOR ISA1235AC1TP-1EF	
IC101	6-710-863-01	IC TK70540SCL-G		Q372	8-729-120-28	TRANSISTOR 2SC1623-L5L6	
IC301	6-706-641-01	IC LA4631-E		Q507	8-729-120-28	TRANSISTOR 2SC1623-L5L6	
IC401	6-702-895-01	IC BD3881FV		Q801	8-729-120-28	TRANSISTOR 2SC1623-L5L6	
IC801	6-708-840-01	IC LV23003VA		Q802	8-729-120-28	TRANSISTOR 2SC1623-L5L6	
IC861	6-708-918-01	IC PT2579SN (UK)		Q803	6-550-304-01	TRANSISTOR 2SC5477-T122-1	
				Q861	8-729-120-28	TRANSISTOR 2SC1623-L5L6 (UK)	
				Q862	8-729-120-28	TRANSISTOR 2SC1623-L5L6 (UK)	

Note: Refer to supplement-1 for MAIN board (AEP, Brazilian and Thai models).



Ref. No.	Part No.	Description	Remark	Ref. No.	Part No.	Description	Remark
		< RESISTOR >					
R101	1-216-833-11	METAL CHIP 10K 5%	1/10W	R340	1-216-809-11	METAL CHIP 100	5% 1/10W
R102	1-216-809-11	METAL CHIP 100 5%	1/10W	R351	1-216-833-11	METAL CHIP 10K	5% 1/10W
R103	1-216-841-11	METAL CHIP 47K 5%	1/10W	R352	1-216-825-11	METAL CHIP 2.2K	5% 1/10W
R104	1-216-845-11	METAL CHIP 100K 5%	1/10W	R353	1-216-833-11	METAL CHIP 10K	5% 1/10W
R105	1-216-845-11	METAL CHIP 100K 5%	1/10W	R354	1-216-833-11	METAL CHIP 10K	5% 1/10W
R106	1-216-836-11	METAL CHIP 18K 5%	1/10W	R355	1-216-833-11	METAL CHIP 10K	5% 1/10W
R107	1-216-817-11	METAL CHIP 470 5%	1/10W	R356	1-216-837-11	METAL CHIP 22K	5% 1/10W
R108	1-216-809-11	METAL CHIP 100 5%	1/10W	R365	1-216-825-11	METAL CHIP 2.2K	5% 1/10W
R109	1-216-817-11	METAL CHIP 470 5%	1/10W	R371	1-218-446-11	METAL CHIP 1	5% 1/10W
R110	1-216-845-11	METAL CHIP 100K 5%	1/10W	R372	1-218-446-11	METAL CHIP 1	5% 1/10W
R111	1-216-853-11	METAL CHIP 470K 5%	1/10W	R373	1-218-446-11	METAL CHIP 1	5% 1/10W
R112	1-216-853-11	METAL CHIP 470K 5%	1/10W	R374	1-218-446-11	METAL CHIP 1	5% 1/10W
R113	1-216-829-11	METAL CHIP 4.7K 5%	1/10W	R375	1-218-446-11	METAL CHIP 1	5% 1/10W
R114	1-216-829-11	METAL CHIP 4.7K 5%	1/10W	R376	1-218-446-11	METAL CHIP 1	5% 1/10W
R115	1-249-409-11	CARBON 220 5%	1/4W	R377	1-218-446-11	METAL CHIP 1	5% 1/10W
R116	1-249-409-11	CARBON 220 5%	1/4W	R378	1-218-446-11	METAL CHIP 1	5% 1/10W
R117	1-249-409-11	CARBON 220 5%	1/4W	R379	1-218-446-11	METAL CHIP 1	5% 1/10W
R118	1-249-409-11	CARBON 220 5%	1/4W	R380	1-218-446-11	METAL CHIP 1	5% 1/10W
R119	1-216-825-11	METAL CHIP 2.2K 5%	1/10W	R381	1-216-833-11	METAL CHIP 10K	5% 1/10W
R120	1-216-825-11	METAL CHIP 2.2K 5%	1/10W	R382	1-216-833-11	METAL CHIP 10K	5% 1/10W
R121	1-216-849-11	METAL CHIP 220K 5%	1/10W	R383	1-216-833-11	METAL CHIP 10K	5% 1/10W
R122	1-216-849-11	METAL CHIP 220K 5%	1/10W	R384	1-216-821-11	METAL CHIP 1K	5% 1/10W
R123	1-216-853-11	METAL CHIP 470K 5%	1/10W	R402	1-216-809-11	METAL CHIP 100	5% 1/10W
R124	1-216-809-11	METAL CHIP 100 5%	1/10W	R403	1-216-821-11	METAL CHIP 1K	5% 1/10W
R125	1-216-829-11	METAL CHIP 4.7K 5%	1/10W	R404	1-216-813-11	METAL CHIP 220	5% 1/10W
R126	1-216-841-11	METAL CHIP 47K 5%	1/10W	R405	1-216-864-11	SHORT CHIP 0	
R127	1-216-841-11	METAL CHIP 47K 5%	1/10W	R406	1-216-821-11	METAL CHIP 1K	5% 1/10W
R128	1-216-813-11	METAL CHIP 220 5%	1/10W	R410	1-216-845-11	METAL CHIP 100K	5% 1/10W
R129	1-216-813-11	METAL CHIP 220 5%	1/10W	R411	1-216-821-11	METAL CHIP 1K	5% 1/10W
R130	1-216-813-11	METAL CHIP 220 5%	1/10W	R412	1-216-813-11	METAL CHIP 220	5% 1/10W
R131	1-216-813-11	METAL CHIP 220 5%	1/10W	R419	1-216-839-11	METAL CHIP 33K	5% 1/10W
R151	1-216-833-11	METAL CHIP 10K 5%	1/10W	R420	1-216-839-11	METAL CHIP 33K	5% 1/10W
R152	1-216-833-11	METAL CHIP 10K 5%	1/10W	R423	1-216-829-11	METAL CHIP 4.7K	5% 1/10W
R175	1-216-845-11	METAL CHIP 100K 5%	1/10W	R424	1-216-829-11	METAL CHIP 4.7K	5% 1/10W
R176	1-216-845-11	METAL CHIP 100K 5%	1/10W	R425	1-216-829-11	METAL CHIP 4.7K	5% 1/10W
R177	1-216-845-11	METAL CHIP 100K 5%	1/10W	R426	1-216-829-11	METAL CHIP 4.7K	5% 1/10W
R178	1-216-833-11	METAL CHIP 10K 5%	1/10W	R427	1-216-845-11	METAL CHIP 100K	5% 1/10W
R179	1-216-833-11	METAL CHIP 10K 5%	1/10W	R428	1-216-845-11	METAL CHIP 100K	5% 1/10W
R181	1-216-797-11	METAL CHIP 10 5%	1/10W	R429	1-216-829-11	METAL CHIP 4.7K	5% 1/10W
R182	1-216-797-11	METAL CHIP 10 5%	1/10W	R430	1-216-829-11	METAL CHIP 4.7K	5% 1/10W
R185	1-247-807-31	CARBON 100 5%	1/4W	R433	1-216-837-11	METAL CHIP 22K	5% 1/10W
R186	1-247-807-31	CARBON 100 5%	1/4W	R434	1-216-837-11	METAL CHIP 22K	5% 1/10W
R187	1-247-807-31	CARBON 100 5%	1/4W	R439	1-216-829-11	METAL CHIP 4.7K	5% 1/10W
R188	1-216-837-11	METAL CHIP 22K 5%	1/10W	R440	1-216-829-11	METAL CHIP 4.7K	5% 1/10W
R189	1-216-837-11	METAL CHIP 22K 5%	1/10W	R441	1-216-841-11	METAL CHIP 47K	5% 1/10W
R192	1-216-845-11	METAL CHIP 100K 5%	1/10W	R442	1-216-841-11	METAL CHIP 47K	5% 1/10W
R195	1-216-809-11	METAL CHIP 100 5%	1/10W	R501	1-216-809-11	METAL CHIP 100	5% 1/10W
R196	1-216-809-11	METAL CHIP 100 5%	1/10W	R502	1-216-809-11	METAL CHIP 100	5% 1/10W
R197	1-247-807-31	CARBON 100 5%	1/4W	R503	1-216-829-11	METAL CHIP 4.7K	5% 1/10W
R198	1-247-807-31	CARBON 100 5%	1/4W	R504	1-216-829-11	METAL CHIP 4.7K	5% 1/10W
R199	1-247-807-31	CARBON 100 5%	1/4W	R505	1-216-833-11	METAL CHIP 10K	5% 1/10W
R301	1-216-837-11	METAL CHIP 22K 5%	1/10W	R506	1-216-833-11	METAL CHIP 10K	5% 1/10W
R302	1-216-837-11	METAL CHIP 22K 5%	1/10W	R507	1-216-825-11	METAL CHIP 2.2K	5% 1/10W
R303	1-216-825-11	METAL CHIP 2.2K 5%	1/10W	R508	1-216-825-11	METAL CHIP 2.2K	5% 1/10W
R304	1-216-825-11	METAL CHIP 2.2K 5%	1/10W	R509	1-216-853-11	METAL CHIP 470K	5% 1/10W
R305	1-216-829-11	METAL CHIP 4.7K 5%	1/10W	R510	1-216-853-11	METAL CHIP 470K	5% 1/10W
R306	1-216-829-11	METAL CHIP 4.7K 5%	1/10W	R511	1-216-861-11	METAL CHIP 2.2M	5% 1/10W
R307	1-216-837-11	METAL CHIP 22K 5%	1/10W	R512	1-216-861-11	METAL CHIP 2.2M	5% 1/10W
R308	1-216-837-11	METAL CHIP 22K 5%	1/10W	R513	1-216-809-11	METAL CHIP 100	5% 1/10W
R339	1-216-809-11	METAL CHIP 100 5%	1/10W	R514	1-216-809-11	METAL CHIP 100	5% 1/10W

Note: Refer to supplement-1 for MAIN board (AEP, Brazilian and Thai models).

## HCD-EH15

Ver. 1.2

MAIN

Ref. No.	Part No.	Description			Remark	Ref. No.	Part No.	Description			Remark
R515	1-216-805-11	METAL CHIP	47	5%	1/10W	R828	1-216-805-11	METAL CHIP	47	5%	1/10W
R516	1-216-805-11	METAL CHIP	47	5%	1/10W						(EXCEPT UK, RU)
R517	1-216-845-11	METAL CHIP	100K	5%	1/10W	R829	1-216-845-11	METAL CHIP	100K	5%	1/10W
R518	1-216-845-11	METAL CHIP	100K	5%	1/10W	R830	1-216-841-11	METAL CHIP	47K	5%	1/10W
R519	1-216-839-11	METAL CHIP	33K	5%	1/10W	R831	1-216-813-11	METAL CHIP	220	5%	1/10W
R520	1-216-839-11	METAL CHIP	33K	5%	1/10W	R833	1-216-833-11	METAL CHIP	10K	5%	1/10W
R521	1-216-837-11	METAL CHIP	22K	5%	1/10W	R834	1-216-837-11	METAL CHIP	22K	5%	1/10W
R522	1-216-837-11	METAL CHIP	22K	5%	1/10W	R835	1-216-829-11	METAL CHIP	4.7K	5%	1/10W
R523	1-216-829-11	METAL CHIP	4.7K	5%	1/10W	R836	1-216-833-11	METAL CHIP	10K	5%	1/10W
R524	1-216-829-11	METAL CHIP	4.7K	5%	1/10W	R837	1-216-821-11	METAL CHIP	1K	5%	1/10W
R525	1-216-833-11	METAL CHIP	10K	5%	1/10W	R838	1-216-821-11	METAL CHIP	1K	5%	1/10W
R526	1-216-833-11	METAL CHIP	10K	5%	1/10W	R839	1-216-809-11	METAL CHIP	100	5%	1/10W
R527	1-216-829-11	METAL CHIP	4.7K	5%	1/10W	R840	1-216-837-11	METAL CHIP	22K	5%	1/10W
R528	1-216-829-11	METAL CHIP	4.7K	5%	1/10W	R841	1-216-809-11	METAL CHIP	100	5%	1/10W
R529	1-216-825-11	METAL CHIP	2.2K	5%	1/10W	R842	1-216-841-11	METAL CHIP	47K	5%	1/10W
R530	1-216-825-11	METAL CHIP	2.2K	5%	1/10W	R843	1-216-853-11	METAL CHIP	470K	5%	1/10W
R531	1-216-829-11	METAL CHIP	4.7K	5%	1/10W	R844	1-216-797-11	METAL CHIP	10	5%	1/10W
R532	1-216-829-11	METAL CHIP	4.7K	5%	1/10W	R845	1-216-801-11	METAL CHIP	22	5%	1/10W
R533	1-216-833-11	METAL CHIP	10K	5%	1/10W	R846	1-216-825-11	METAL CHIP	2.2K	5%	1/10W
R534	1-216-833-11	METAL CHIP	10K	5%	1/10W	R847	1-216-801-11	METAL CHIP	22	5%	1/10W
R535	1-216-813-11	METAL CHIP	220	5%	1/10W	R848	1-216-821-11	METAL CHIP	1K	5%	1/10W
R536	1-216-813-11	METAL CHIP	220	5%	1/10W	R849	1-216-837-11	METAL CHIP	22K	5%	1/10W
R541	1-216-837-11	METAL CHIP	22K	5%	1/10W	R850	1-216-825-11	METAL CHIP	2.2K	5%	1/10W
R542	1-216-833-11	METAL CHIP	10K	5%	1/10W	R851	1-216-837-11	METAL CHIP	22K	5%	1/10W
R543	1-216-829-11	METAL CHIP	4.7K	5%	1/10W	R853	1-216-845-11	METAL CHIP	100K	5%	1/10W
R544	1-216-829-11	METAL CHIP	4.7K	5%	1/10W	R856	1-216-841-11	METAL CHIP	47K	5%	1/10W
R545	1-216-829-11	METAL CHIP	4.7K	5%	1/10W	R857	1-216-841-11	METAL CHIP	47K	5%	1/10W
R560	1-216-821-11	METAL CHIP	1K	5%	1/10W						(UK)
R561	1-216-837-11	METAL CHIP	22K	5%	1/10W	R859	1-216-821-11	METAL CHIP	1K	5%	1/10W
R564	1-216-793-11	METAL CHIP	4.7	5%	1/10W						(UK, RU)
R565	1-216-793-11	METAL CHIP	4.7	5%	1/10W	R859	1-216-837-11	METAL CHIP	22K	5%	1/10W
R801	1-216-825-11	METAL CHIP	2.2K	5%	1/10W						(EXCEPT UK, RU)
R802	1-216-797-11	METAL CHIP	10	5%	1/10W	R860	1-216-821-11	METAL CHIP	1K	5%	1/10W
R803	1-216-797-11	METAL CHIP	10	5%	1/10W						(UK, RU)
R804	1-216-864-11	SHORT CHIP	0			R860	1-216-837-11	METAL CHIP	22K	5%	1/10W
R805	1-216-845-11	METAL CHIP	100K	5%	1/10W						(EXCEPT UK, RU)
R806	1-216-864-11	SHORT CHIP	0			R861	1-216-833-11	METAL CHIP	10K	5%	1/10W
R807	1-216-845-11	METAL CHIP	100K	5%	1/10W						(UK)
R808	1-216-833-11	METAL CHIP	10K	5%	1/10W	R863	1-216-837-11	METAL CHIP	22K	5%	1/10W
R809	1-216-821-11	METAL CHIP	1K	5%	1/10W	R864	1-216-833-11	METAL CHIP	10K	5%	1/10W
R810	1-216-857-11	METAL CHIP	1M	5%	1/10W						(UK)
R811	1-216-829-11	METAL CHIP	4.7K	5%	1/10W	R866	1-216-833-11	METAL CHIP	10K	5%	1/10W
R812	1-216-817-11	METAL CHIP	470	5%	1/10W						(UK)
R813	1-216-833-11	METAL CHIP	10K	5%	1/10W	R867	1-216-833-11	METAL CHIP	10K	5%	1/10W
R814	1-216-809-11	METAL CHIP	100	5%	1/10W						(UK)
R815	1-216-829-11	METAL CHIP	4.7K	5%	1/10W	R868	1-216-833-11	METAL CHIP	10K	5%	1/10W
R816	1-216-833-11	METAL CHIP	10K	5%	1/10W						(UK)
R817	1-216-833-11	METAL CHIP	10K	5%	1/10W	R869	1-216-833-11	METAL CHIP	10K	5%	1/10W
R818	1-216-841-11	METAL CHIP	47K	5%	1/10W						(UK)
R819	1-216-841-11	METAL CHIP	47K	5%	1/10W	R870	1-216-853-11	METAL CHIP	470K	5%	1/10W
R820	1-216-833-11	METAL CHIP	10K	5%	1/10W						(UK)
R821	1-216-813-11	METAL CHIP	220	5%	1/10W	R871	1-216-849-11	METAL CHIP	220K	5%	1/10W
R822	1-216-825-11	METAL CHIP	2.2K	5%	1/10W						(UK)
R823	1-216-809-11	METAL CHIP	100	5%	1/10W	R872	1-216-813-11	METAL CHIP	220	5%	1/10W
R824	1-216-825-11	METAL CHIP	2.2K	5%	1/10W						(UK)
R825	1-216-817-11	METAL CHIP	470	5%	1/10W	R873	1-216-825-11	METAL CHIP	2.2K	5%	1/10W
R826	1-216-809-11	METAL CHIP	100	5%	1/10W						(UK)
R827	1-216-809-11	METAL CHIP	100	5%	1/10W	R874	1-216-845-11	METAL CHIP	100K	5%	1/10W
R828	1-216-801-11	METAL CHIP	22	5%	1/10W						(UK)

Note: Refer to supplement-1 for MAIN board (AEP, Brazilian and Thai models).

Ref. No.	Part No.	Description	Remark	Ref. No.	Part No.	Description	Remark
R876	1-216-841-11	METAL CHIP 47K 5%	1/10W (UK)			< IC >	
		< SWITCH >		IC701	A-1545-973-A	IC MB90F830PF-GE1 (for SERVICE)	
SW501	1-762-369-11	SWITCH, SLIDE (REC/PB)		IC703	6-600-349-31	IC NJL24H400A	
		< VIBRATOR >				< JUMPER RESISTOR >	
X801	1-767-388-21	VIBRATOR, CRYSTAL (75kHz) (EXCEPT UK, RU)		JR704	1-216-864-11	SHORT CHIP	0
X801	1-795-926-11	VIBRATOR, CRYSTAL (75kHz) (UK, RU)		JR705	1-216-864-11	SHORT CHIP	0
X861	1-579-900-21	VIBRATOR, CRYSTAL (4.332MHz) (UK)		JR706	1-216-864-11	SHORT CHIP	0
*****				JR707	1-216-864-11	SHORT CHIP	0
	A-1508-455-A	PANEL BOARD, COMPLETE (AEP, UK)		JR708	1-216-864-11	SHORT CHIP	0
	A-1508-530-A	PANEL BOARD, COMPLETE (CND, BR)		JR709	1-216-864-11	SHORT CHIP	0
	A-1508-558-A	PANEL BOARD, COMPLETE (SP, TW, KR, TH)		JR710	1-216-864-11	SHORT CHIP	0
	A-1508-593-A	PANEL BOARD, COMPLETE (E51, MX, AR)		JR713	1-216-864-11	SHORT CHIP	0
	A-1527-693-A	PANEL BOARD, COMPLETE (AUS)		JR714	1-216-864-11	SHORT CHIP	0
	A-1542-781-A	PANEL BOARD, COMPLETE (RU)	*****	JR719	1-216-864-11	SHORT CHIP	0
	2-636-531-01	HOLDER (LCD)		JR722	1-216-864-11	SHORT CHIP	0
	2-636-532-01	ILLUMINATOR (LCD)		JR723	1-216-864-11	SHORT CHIP	0
	2-636-545-01	SHEET (LCD)		JR743	1-216-864-11	SHORT CHIP	0
		< CAPACITOR >		JR744	1-216-864-11	SHORT CHIP	0
C701	1-164-156-11	CERAMIC CHIP 0.1uF	25V	JR747	1-216-864-11	SHORT CHIP	0
C702	1-162-970-11	CERAMIC CHIP 0.01uF	10% 25V	JR748	1-216-864-11	SHORT CHIP	0
C704	1-126-518-11	ELECT 470uF	20% 4V	JR749	1-216-864-11	SHORT CHIP	0
C706	1-164-156-11	CERAMIC CHIP 0.1uF	25V	JR750	1-216-864-11	SHORT CHIP	0
C707	1-162-964-11	CERAMIC CHIP 0.001uF	10% 50V	JR751	1-216-864-11	SHORT CHIP	0
C710	1-165-908-11	CERAMIC CHIP 1uF	10% 10V	JR752	1-216-864-11	SHORT CHIP	0
C711	1-164-156-11	CERAMIC CHIP 0.1uF	25V	JR755	1-216-864-11	SHORT CHIP	0
C712	1-164-156-11	CERAMIC CHIP 0.1uF	25V	JR756	1-216-864-11	SHORT CHIP	0
C716	1-164-156-11	CERAMIC CHIP 0.1uF	25V	JR757	1-216-864-11	SHORT CHIP	0
C719	1-165-176-11	CERAMIC CHIP 0.047uF	10% 16V	JR760	1-216-864-11	SHORT CHIP	0
C721	1-162-971-11	CERAMIC CHIP 0.001uF	10% 50V	JR762	1-216-864-11	SHORT CHIP	0
C722	1-162-971-11	CERAMIC CHIP 0.001uF	10% 50V	JR763	1-216-864-11	SHORT CHIP	0
C723	1-162-971-11	CERAMIC CHIP 0.001uF	10% 50V	JR775	1-216-864-11	SHORT CHIP	0
C724	1-113-905-11	CERAMIC 220PF	10% 250V	JR788	1-216-864-11	SHORT CHIP	0
C725	1-126-382-11	ELECT 100uF	20% 16V	JR789	1-216-864-11	SHORT CHIP	0
C726	1-162-970-11	CERAMIC CHIP 0.01uF	10% 25V	L701	1-216-864-11	SHORT CHIP	0
C727	1-162-923-11	CERAMIC CHIP 47PF	5% 50V	L702	1-216-864-11	SHORT CHIP	0
C728	1-162-923-11	CERAMIC CHIP 47PF	5% 50V			< LIQUID CRYSTAL DISPLAY >	
C729	1-162-964-11	CERAMIC CHIP 0.001uF	10% 50V	LCD702	1-802-381-11	DISPLAY PANEL, LIQUID CRYSTAL	
C731	1-164-156-11	CERAMIC CHIP 0.1uF	25V			< LED >	
C732	1-162-918-11	CERAMIC CHIP 18PF	5% 50V	LED701	6-502-498-01	LED SELU2B10A-SLF62FGH	(LCD BACK)
C733	1-162-919-11	CERAMIC CHIP 22PF	5% 50V	LED702	6-501-452-01	LED 1L4345V22DOTD02 (STANDBY)	
		< CONNECTOR >				< TRANSISTOR >	
CNP701	1-779-289-11	CONNECTOR, FFC (LIF (NON-ZIF)) 21P		Q701	6-551-696-01	TRANSISTOR ISA1235AC1TP-1EF	
CNP703	1-784-727-11	CONNECTOR, FFC 5P (EXCEPT AEP, UK)		Q702	8-729-120-28	TRANSISTOR 2SC1623-L5L6	
CNP703	1-568-850-11	CONNECTOR, FFC 7P (AEP, UK)		Q703	8-729-120-28	TRANSISTOR 2SC1623-L5L6	
CNP706	1-784-778-11	CONNECTOR, FFC 17P		Q704	8-729-038-28	TRANSISTOR RT1N441C-TP-1	
		< DIODE >		Q705	8-729-120-28	TRANSISTOR 2SC1623-L5L6	
D701	6-501-163-01	DIODE UDZW-TE17-3.6B		Q706	8-729-120-28	TRANSISTOR 2SC1623-L5L6	
D702	6-500-334-01	DIODE MC2836-T112-1		Q707	8-729-120-28	TRANSISTOR 2SC1623-L5L6	
D801	6-501-582-01	DIODE 1N4002-B5		Q713	8-729-038-28	TRANSISTOR RT1N441C-TP-1	
D804	6-501-582-01	DIODE 1N4002-B5		Q714	6-551-696-01	TRANSISTOR ISA1235AC1TP-1EF	
		< RESISTOR >				< RESISTOR >	
				R701	1-216-817-11	METAL CHIP 470 5%	1/1

Note: Refer to supplement-1 for MAIN board (AEP, Brazilian and Thai models).

# HCD-EH15

Ver. 1.2

## PANEL

Ref. No.	Part No.	Description			Remark	Ref. No.	Part No.	Description			Remark
R702	1-216-821-11	METAL CHIP	1K	5%	1/10W	R781	1-216-813-11	METAL CHIP	220	5%	1/10W
R703	1-216-821-11	METAL CHIP	1K	5%	1/10W						(RU)
R704	1-216-821-11	METAL CHIP	1K	5%	1/10W	R781	1-216-817-11	METAL CHIP	470	5%	1/10W
R705	1-216-821-11	METAL CHIP	1K	5%	1/10W						(E51, MX, AR)
R706	1-216-821-11	METAL CHIP	1K	5%	1/10W	R781	1-216-821-11	METAL CHIP	1K	5%	1/10W
R707	1-216-821-11	METAL CHIP	1K	5%	1/10W						(CND, BR)
R708	1-216-821-11	METAL CHIP	1K	5%	1/10W	R781	1-216-829-11	METAL CHIP	4.7K	5%	1/10W
R709	1-216-821-11	METAL CHIP	1K	5%	1/10W						(AUS)
R710	1-216-821-11	METAL CHIP	1K	5%	1/10W	R781	1-216-864-11	SHORT CHIP	0	(AEP, UK)	
R711	1-216-821-11	METAL CHIP	1K	5%	1/10W	R782	1-216-829-11	METAL CHIP	4.7K	5%	1/10W
R713	1-216-833-11	METAL CHIP	10K	5%	1/10W						(CND, RU, E51, MX, BR, AR, AUS)
R714	1-216-833-11	METAL CHIP	10K	5%	1/10W	R782	1-216-864-11	SHORT CHIP	0	(SP, TW, KR, TH)	
R718	1-216-821-11	METAL CHIP	1K	5%	1/10W	R783	1-216-864-11	SHORT CHIP	0	(EXCEPT AEP, UK)	
R719	1-216-821-11	METAL CHIP	1K	5%	1/10W	R784	1-216-845-11	METAL CHIP	100K	5%	1/10W
R720	1-216-821-11	METAL CHIP	1K	5%	1/10W	R785	1-216-833-11	METAL CHIP	10K	5%	1/10W
R721	1-216-817-11	METAL CHIP	470	5%	1/10W	R787	1-216-841-11	METAL CHIP	47K	5%	1/10W
R722	1-216-821-11	METAL CHIP	1K	5%	1/10W	R788	1-216-821-11	METAL CHIP	1K	5%	1/10W
R723	1-216-817-11	METAL CHIP	470	5%	1/10W	R789	1-216-821-11	METAL CHIP	1K	5%	1/10W
R727	1-216-821-11	METAL CHIP	1K	5%	1/10W	R790	1-216-821-11	METAL CHIP	1K	5%	1/10W
R728	1-216-833-11	METAL CHIP	10K	5%	1/10W	R791	1-216-821-11	METAL CHIP	1K	5%	1/10W
R730	1-216-821-11	METAL CHIP	1K	5%	1/10W	R792	1-216-833-11	METAL CHIP	10K	5%	1/10W
R732	1-216-841-11	METAL CHIP	47K	5%	1/10W	R793	1-216-833-11	METAL CHIP	10K	5%	1/10W
R733	1-216-841-11	METAL CHIP	47K	5%	1/10W	R798	1-216-841-11	METAL CHIP	47K	5%	1/10W
R734	1-216-821-11	METAL CHIP	1K	5%	1/10W	R799	1-216-845-11	METAL CHIP	100K	5%	1/10W
R736	1-216-821-11	METAL CHIP	1K	5%	1/10W	< SWITCH >					
R738	1-216-833-11	METAL CHIP	10K	5%	1/10W	SW700	1-478-642-11	ENCODER, ROTARY (VOLUME)			
R739	1-216-833-11	METAL CHIP	10K	5%	1/10W	SW701	1-762-875-21	SWITCH, KEYBOARD (TUNER/BAND)			
R740	1-216-829-11	METAL CHIP	4.7K	5%	1/10W						(CND, AEP, RU, UK, BR)
R741	1-216-829-11	METAL CHIP	4.7K	5%	1/10W	SW701	1-771-410-21	SWITCH, TACTILE (TUNER/BAND)			
R742	1-216-821-11	METAL CHIP	1K	5%	1/10W						(E51, MX, SP, TW, AR, KR, TH, AUS)
R743	1-216-821-11	METAL CHIP	1K	5%	1/10W	SW702	1-762-875-21	SWITCH, KEYBOARD (CD ▶▶II)			
R744	1-216-825-11	METAL CHIP	2.2K	5%	1/10W						(CND, AEP, RU, UK, BR)
R745	1-216-833-11	METAL CHIP	10K	5%	1/10W	SW702	1-771-410-21	SWITCH, TACTILE (CD ▶▶II)			
R746	1-216-825-11	METAL CHIP	2.2K	5%	1/10W						(E51, MX, SP, TW, AR, KR, TH, AUS)
R747	1-216-829-11	METAL CHIP	4.7K	5%	1/10W	SW703	1-762-875-21	SWITCH, KEYBOARD (TUNING +, ▶▶▷▷I)			
R748	1-216-841-11	METAL CHIP	47K	5%	1/10W						(CND, AEP, RU, UK, BR)
R749	1-216-821-11	METAL CHIP	1K	5%	1/10W	SW703	1-771-410-21	SWITCH, TACTILE (TUNING +, ▶▶▷▷I)			
R750	1-216-825-11	METAL CHIP	2.2K	5%	1/10W						(E51, MX, SP, TW, AR, KR, TH, AUS)
R751	1-216-821-11	METAL CHIP	1K	5%	1/10W	SW704	1-762-875-21	SWITCH, KEYBOARD (TUNING -, II<<<◀◀)			
R753	1-216-809-11	METAL CHIP	100	5%	1/10W						(CND, AEP, RU, UK, BR)
R754	1-216-833-11	METAL CHIP	10K	5%	1/10W	SW704	1-771-410-21	SWITCH, TACTILE (TUNING -, II<<<◀◀)			
R755	1-216-845-11	METAL CHIP	100K	5%	1/10W						(E51, MX, SP, TW, AR, KR, TH, AUS)
R757	1-216-845-11	METAL CHIP	100K	5%	1/10W	SW705	1-762-875-21	SWITCH, KEYBOARD (II◁)			
R759	1-216-809-11	METAL CHIP	100	5%	1/10W						(CND, AEP, RU, UK, BR)
R760	1-216-845-11	METAL CHIP	100K	5%	1/10W	SW705	1-771-410-21	SWITCH, TACTILE (II◁)			
R761	1-216-841-11	METAL CHIP	47K	5%	1/10W						(E51, MX, SP, TW, AR, KR, TH, AUS)
R762	1-216-825-11	METAL CHIP	2.2K	5%	1/10W	SW706	1-762-875-21	SWITCH, KEYBOARD (SELECT FOLDER -)			
R763	1-216-837-11	METAL CHIP	22K	5%	1/10W						(CND, AEP, RU, UK, BR)
R764	1-216-837-11	METAL CHIP	22K	5%	1/10W	SW706	1-771-410-21	SWITCH, TACTILE (SELECT FOLDER -)			
R765	1-216-829-11	METAL CHIP	4.7K	5%	1/10W						(E51, MX, SP, TW, AR, KR, TH, AUS)
R766	1-216-797-11	METAL CHIP	10	5%	1/10W	SW707	1-762-875-21	SWITCH, KEYBOARD (SELECT FOLDER +)			
R767	1-216-849-11	METAL CHIP	220K	5%	1/10W						(CND, AEP, RU, UK, BR)
R768	1-216-805-11	METAL CHIP	47	5%	1/10W	SW707	1-771-410-21	SWITCH, TACTILE (SELECT FOLDER +)			
R770	1-216-841-11	METAL CHIP	47K	5%	1/10W						(E51, MX, SP, TW, AR, KR, TH, AUS)
R771	1-216-840-11	METAL CHIP	39K	5%	1/10W	SW708	1-762-875-21	SWITCH, KEYBOARD (FUNCTION)			
R772	1-216-837-11	METAL CHIP	22K	5%	1/10W						(CND, AEP, RU, UK, BR)
R774	1-216-821-11	METAL CHIP	1K	5%	1/10W	SW708	1-771-410-21	SWITCH, TACTILE (FUNCTION)			
R775	1-216-805-11	METAL CHIP	47	5%	1/10W						(E51, MX, SP, TW, AR, KR, TH, AUS)
R777	1-216-805-11	METAL CHIP	47	5%	1/10W	SW710	1-762-875-21	SWITCH, KEYBOARD (■)			
R779	1-216-849-11	METAL CHIP	220K	5%	1/10W						(CND, AEP, RU, UK, BR)
						SW710	1-771-410-21	SWITCH, TACTILE (■)			
											(E51, MX, SP, TW, AR, KR, TH, AUS)
						SW711	1-762-875-21	SWITCH, KEYBOARD (DSGX)			
											(CND, AEP, RU, UK, BR)

Ref. No.	Part No.	Description	Remark	Ref. No.	Part No.	Description	Remark
SW711	1-771-410-21	SWITCH, TACTILE (DSGX) (E51, MX, SP, TW, AR, KR, TH, AUS)		FFC001	1-832-797-21	CABLE, FLEXIBLE FLAT (5 CORE) (EXCEPT AEP, F)	
		< VIBRATOR >		FFC001	1-832-807-21	CABLE, FLEXIBLE FLAT (7 CORE) (AEP, U)	
X701	1-814-067-11	OSCILLATOR, CRYSTAL (32.768kHz)		FFC002	1-832-854-21	CABLE, FLEXIBLE FLAT (17 CORE)	
X702	1-813-940-11	PIEZOELECTRIC OSCILLATOR (5.53MHz)		FFC003	1-835-211-21	CABLE, FLEXIBLE FLAT	
*****				△ PT005	1-445-421-11	TRANSFORMER, POWER (AR, KR, TH)	
		PT-AC BOARD		△ PT005	1-445-422-11	TRANSFORMER, POWER (AEP, RU, UK)	
		*****		△ PT005	1-445-423-11	TRANSFORMER, POWER (E51, SP, AUS)	
		< CONNECTOR >		△ PT005	1-445-424-11	TRANSFORMER, POWER (CND, MX, TW)	
CN002	1-819-131-11	PIN, CONNECTOR 3P		△ PT005	1-445-513-11	TRANSFORMER, POWER (BR)	
		< FUSE HOLDER >		S201	1-771-853-11	SWITCH, DETECTION (LIMIT)	
T003	1-533-217-31	FUSE HOLDER (PT-AC board suffix-16 or after)		SW750	1-692-960-11	SWITCH, PUSH (1 KEY) (CD LID OPEN/CLOSE D)	
T003	1-533-233-31	FUSE HOLDER (PT-AC board suffix-15 or before)		*****			
T004	1-533-217-31	FUSE HOLDER (PT-AC board suffix-16 or after)				ACCESSORIES	
T004	1-533-233-31	FUSE HOLDER (PT-AC board suffix-15 or before)				*****	
*****				△	1-569-008-22	ADAPTOR, CONVERSION 2P (E51, SP)	
		VOLTAGE-SEL BOARD (E51, BR, SP)		△	1-770-019-72	ADAPTOR, CONVERSION PLUG 3P (UK)	
		*****					
		< SWITCH >					
△ S002	1-786-920-11	SWITCH, VOLTAGE SELECTION (VOTAGE SELECTOR)					
		< FUSE HOLDER >					
T005	1-533-217-31	FUSE HOLDER (VOLTAGE-SEL board suffix-16 or after)					
T005	1-533-233-31	FUSE HOLDER (VOLTAGE-SEL board suffix-15 or before)					
T006	1-533-217-31	FUSE HOLDER (VOLTAGE-SEL board suffix-16 or after)					
T006	1-533-233-31	FUSE HOLDER (VOLTAGE-SEL board suffix-15 or before)					
*****							
		MISCELLANEOUS					
		*****					
△ 4	1-769-079-71	AC, POWER-SUPPLY CORD (KR)					
△ 4	1-775-790-81	CORD, POWER (AUS)					
△ 4	1-790-757-52	CORD, POWER (CND, MX)					
△ 4	1-827-597-81	CORD, POWER (TW)					
△ 4	1-830-891-11	CORD, POWER (E51, SP, RU)					
△ 4	1-832-228-11	CORD, POWER (AR)					
△ 4	1-833-218-21	POWER-SUPPLY CORD (BR)					
△ 4	1-834-697-21	CORD, POWER (TH)					
△ 4	1-834-966-31	CORD, POWER (AEP, UK)					
71	A-1771-034-B	MF-EH15 (TAPE MECHANISM DECK)					
74	1-457-413-11	CORE, FERRITE (TW)					
102	1-452-899-11	MAGNET					
△ 151	8-820-126-02	OPTICAL PICK-UP BLOCK (KSM-213CDP/C2NP) (Including spindle motor (M401), sled motor (M402))					
152	1-834-268-21	WIRE (FLAT TYPE) (16 CORE)					
△ F001	1-532-275-33	FUSE (T160mAL/250V) (AEP, RU, UK, AR, KR, TH, AUS)					
△ F001	1-532-467-33	FUSE (T315mAL/250V) (CND, E51, MX, BR, SP, TW)					
△ F002	1-532-275-33	FUSE (T160mAL/250V) (E51, BR, SP)					
FFC001	1-832-796-21	CABLE, FLEXIBLE FLAT (5 CORE) (RU)					

HCD-EH15

MEMO

