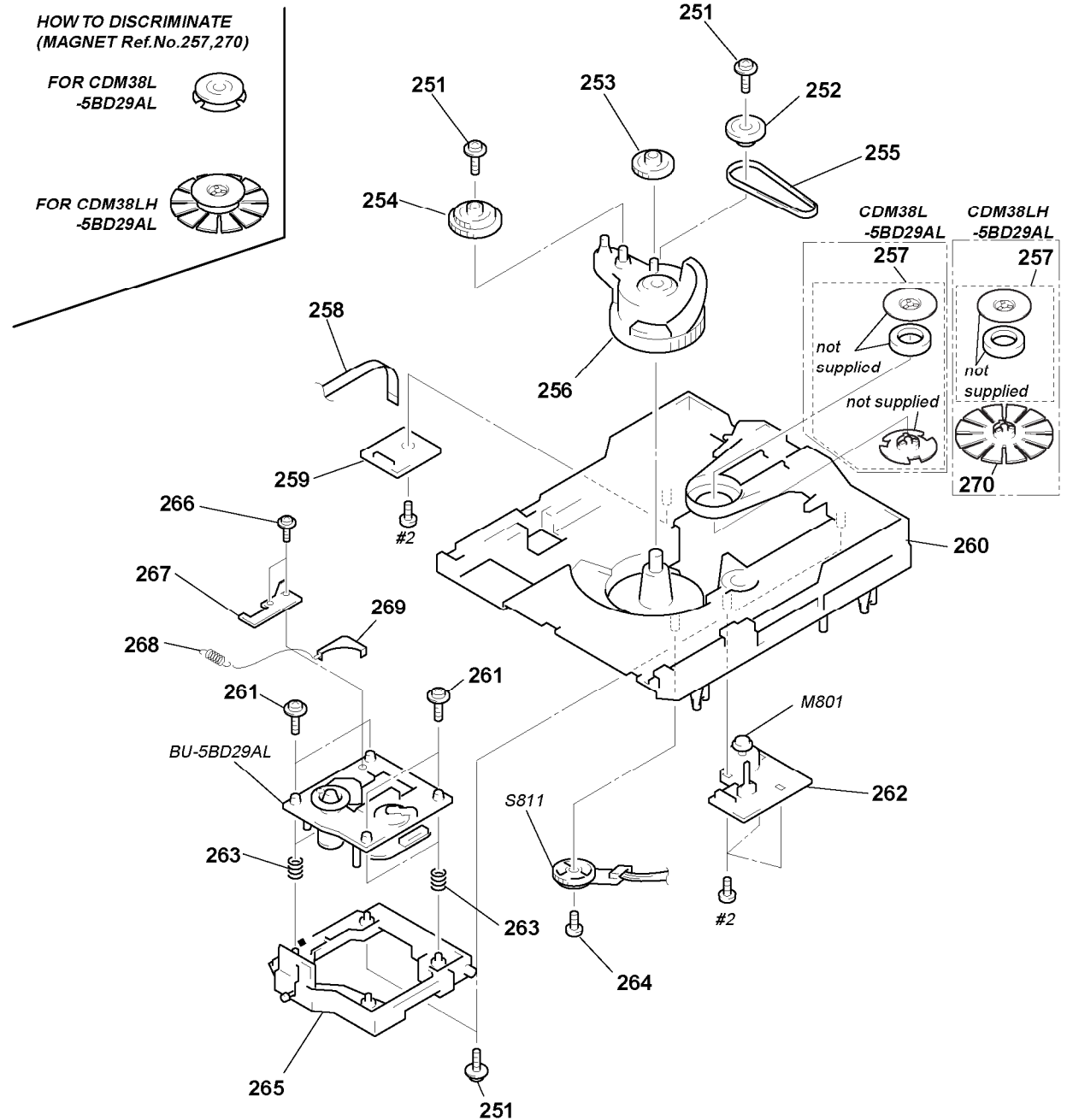


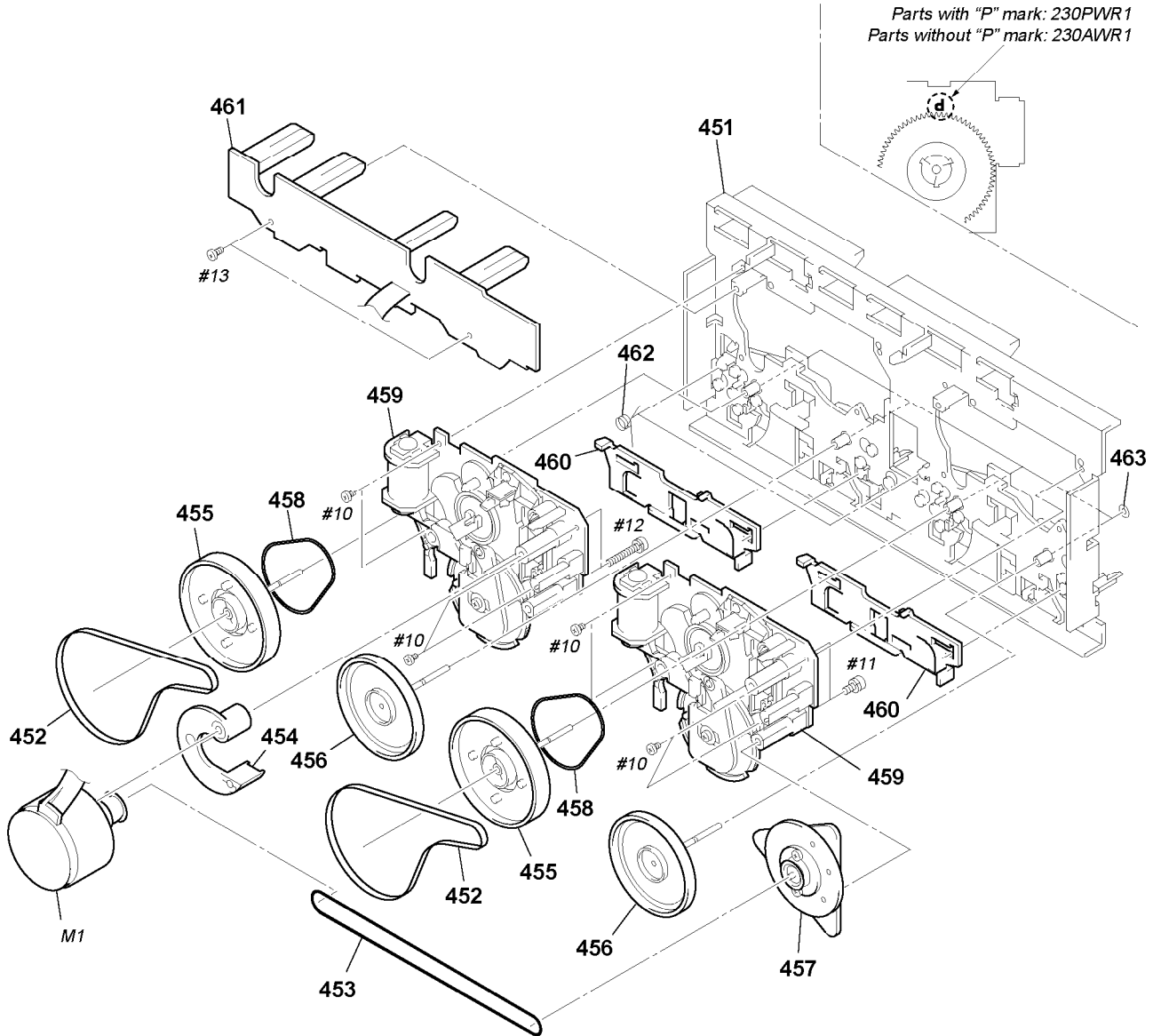
### 8-5. CD MECHANISM DECK SECTION-2 (CDM38L-5BD29AL) (CDM38LH-5BD29AL)



Ref. No.	Part No.	Description	Remark	Ref. No.	Part No.	Description	Remark
251	4-917-583-71	BRACKET, YOKE		* 262	1-658-578-11	MOTOR (SLIDE) BOARD	
252	4-977-954-01	PULLEY (SL)		263	4-982-447-01	SPRING (BU), COMPRESSION	
253	4-977-953-01	GEAR (SL-A)		264	4-951-620-41	SCREW (2.6), +BVTP	
254	4-977-955-01	GEAR (SL-B)		* 265	X-4946-666-1	HOLDER (BU) ASSY	
255	4-977-942-01	BELT (SL) (1.4)		266	4-989-494-01	SCREW (SLIDER), STEP	
256	X-4946-667-1	CAM ASSY, BU		267	4-989-492-21	SLIDER (38)	
257	1-452-879-11	MAGNET (CDM38L-5BD29AL)		268	4-989-819-02	SPRING, TENSION	
257	1-452-925-21	MAGNET ASSY (CDM38LH-5BD29AL)		269	4-989-491-21	COVER, LENS	
258	1-776-042-11	WIRE (FLAT TYPE) (8 CORE)		270	4-933-142-11	PULLEY (L), PRESS (CDM38LH-5BD29AL)	
* 259	1-658-575-11	CONNECTOR BOARD		M801	A-4672-004-A	MOTOR ASSY (SLIDE)	
* 260	X-4946-668-1	CHASSIS (CDM) ASSY		S811	1-473-335-11	ENCODER, ROTARY (BU, TRAY ADDRESS DET)	
261	4-985-672-01	SCREW (+PTPWH M2.6X6), FLOATING					

# 8-8.TC MECHANISM SECTION 2 (TCM230AWR1) (TCM230PWR1)

\* NOTE: Two types of parts which are not interchangeable are available for the mechanical block assembly. When replacing the parts, refer to the following figure, and use the appropriate part.



Ref. No.	Part No.	Description	Remark	Ref. No.	Part No.	Description	Remark
* 451	X-3374-214-1	CASSIS ASSY, MAIN		459	A-2004-629-A	MECHANICAL BLOCK ASSY (230AWR1)(*NOTE)	
452	3-016-570-01	BELT (CAPSTAN)		459	A-2004-630-A	MECHANICAL BLOCK ASSY (230PWR1)(*NOTE)	
453	3-016-569-01	BELT (TENSION)		460	3-016-566-01	SLIDER, REVERSE	
454	3-017-360-01	BRACKET (MOTOR)		* 461	A-2007-732-A	LEAF SW BOARD, COMPLETE	
455	X-3374-234-1	FLYWHEEL (FWD) ASSY		462	3-016-575-01	SPRING, TORSION	
456	X-3374-235-1	FLYWHEEL (REV) ASSY		463	3-019-208-01	WASHER, STOPPER	
457	X-3374-238-1	PULLEY ASSY, TENSION		M1	A-2004-628-A	MOTOR ASSY, CAPSTAN	
458	3-024-405-01	BELT (FR)					