

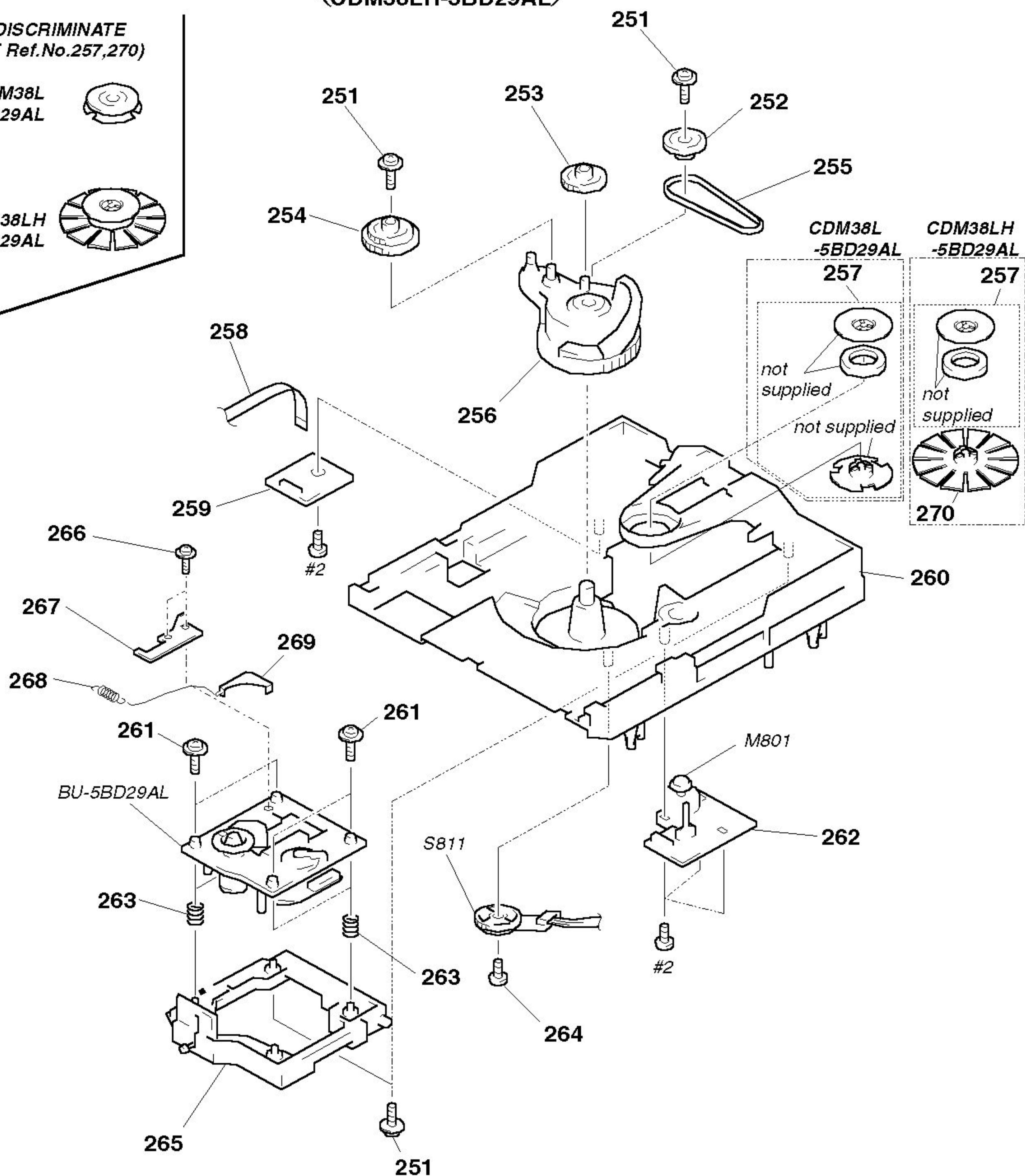
8-5. CD MECHANISM DECK SECTION-2 (CDM38L-5BD29AL / CDM38LH-5BD29AL)

HOW TO DISCRIMINATE
(MAGNET Ref.No.257,270)

FOR CDM38L
-5BD29AL



FOR CDM38LH
-5BD29AL



Ref. No.	Part No.	Description	Remark	Ref. No.	Part No.	Description	Remark
251	4-917-583-71	BRACKET, YOKE		* 262	1-658-578-11	MOTOR (SLIDE) BOARD	
252	4-977-954-01	PULLEY (SL)		263	4-982-447-01	SPRING (BU), COMPRESSION	
253	4-977-953-01	GEAR (SL-A)		264	4-951-620-41	SCREW (2.6), +BVTP	
254	4-977-955-01	GEAR (SL-B)		* 265	X-4946-666-1	HOLDER (BU) ASSY	
255	4-977-942-01	BELT (SL) (1.4)		266	4-989-494-01	SCREW (SLIDER), STEP	
256	X-4946-667-1	CAM ASSY, BU		267	4-989-492-21	SLIDER (38)	
257	1-452-879-11	MAGNET (CDM38L-5BD29AL)		268	4-989-819-02	SPRING, TENSION	
257	1-452-925-21	MAGNET ASSY (CDM38LH-5BD29AL)		269	4-989-491-21	COVER, LENS	
258	1-776-042-11	WIRE (FLAT TYPE) (8 CORE)		270	4-933-142-11	PULLEY (L), PRESS (CDM38LH-5BD29AL)	
* 259	1-658-575-11	CONNECTOR BOARD		M801	A-4672-004-A	MOTOR ASSY (SLIDE)	
* 260	X-4946-668-1	CHASSIS (CDM) ASSY		S811	1-473-335-11	ENCODER, ROTARY (BU, TRAY ADDRESS DET)	
261	4-985-672-01	SCREW (+PTPWH M2.6X6), FLOATING					