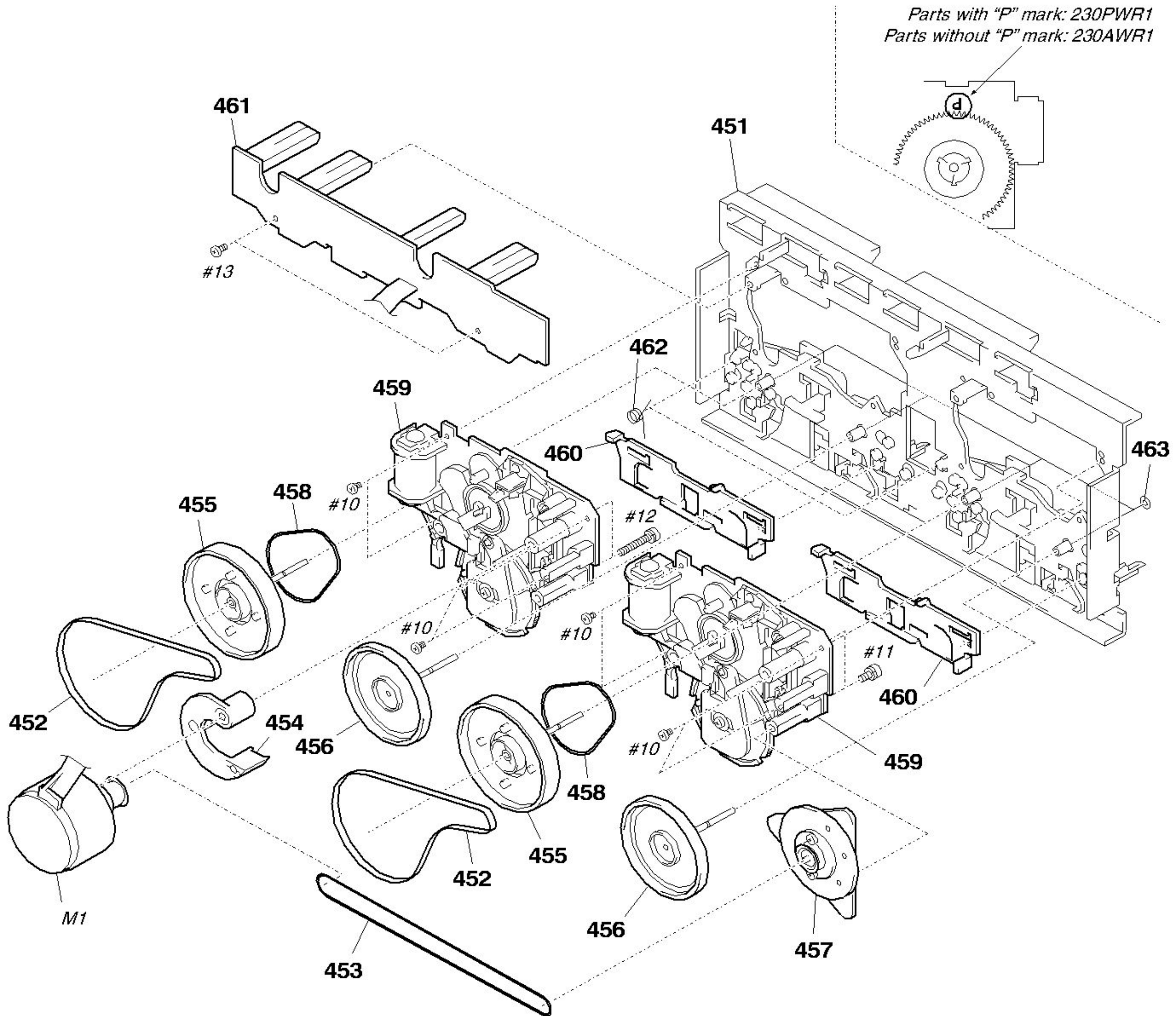


# 8-8. TC MECHANISM SECTION 2 (TCM230AWR1) (TCM230PWR1)

**\* NOTE:** Two types of parts which are not interchangeable are available for the mechanical block assembly. When replacing the parts, refer to the following figure, and use the appropriate part.



Ref. No.	Part No.	Description	Remark	Ref. No.	Part No.	Description	Remark
* 451	X-3374-214-1	CASSIS ASSY, MAIN		459	A-2004-629-A	MECHANICAL BLOCK ASSY (230AWR1)(*NOTE)	
452	3-016-570-01	BELT (CAPSTAN)		459	A-2004-630-A	MECHANICAL BLOCK ASSY (230PWR1)(*NOTE)	
453	3-016-569-01	BELT (TENSION)		460	3-016-566-01	SLIDER, REVERSE	
454	3-017-360-01	BRACKET (MOTOR)		* 461	A-2007-732-A	LEAF SW BOARD, COMPLETE	
455	X-3374-234-1	FLYWHEEL (FWD) ASSY		462	3-016-575-01	SPRING, TORSION	
456	X-3374-235-1	FLYWHEEL (REV) ASSY		463	3-019-208-01	WASHER, STOPPER	
457	X-3374-238-1	PULLEY ASSY, TENSION		M1	A-2004-628-A	MOTOR ASSY, CAPSTAN	
458	3-024-405-01	BELT (FR)					