

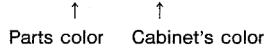
# SECTION 6 EXPLODED VIEWS

**NOTE:**

• -XX, -X mean standardized parts, so they may have some differences from the original one.

• Color Indication of Appearance Parts  
Example:

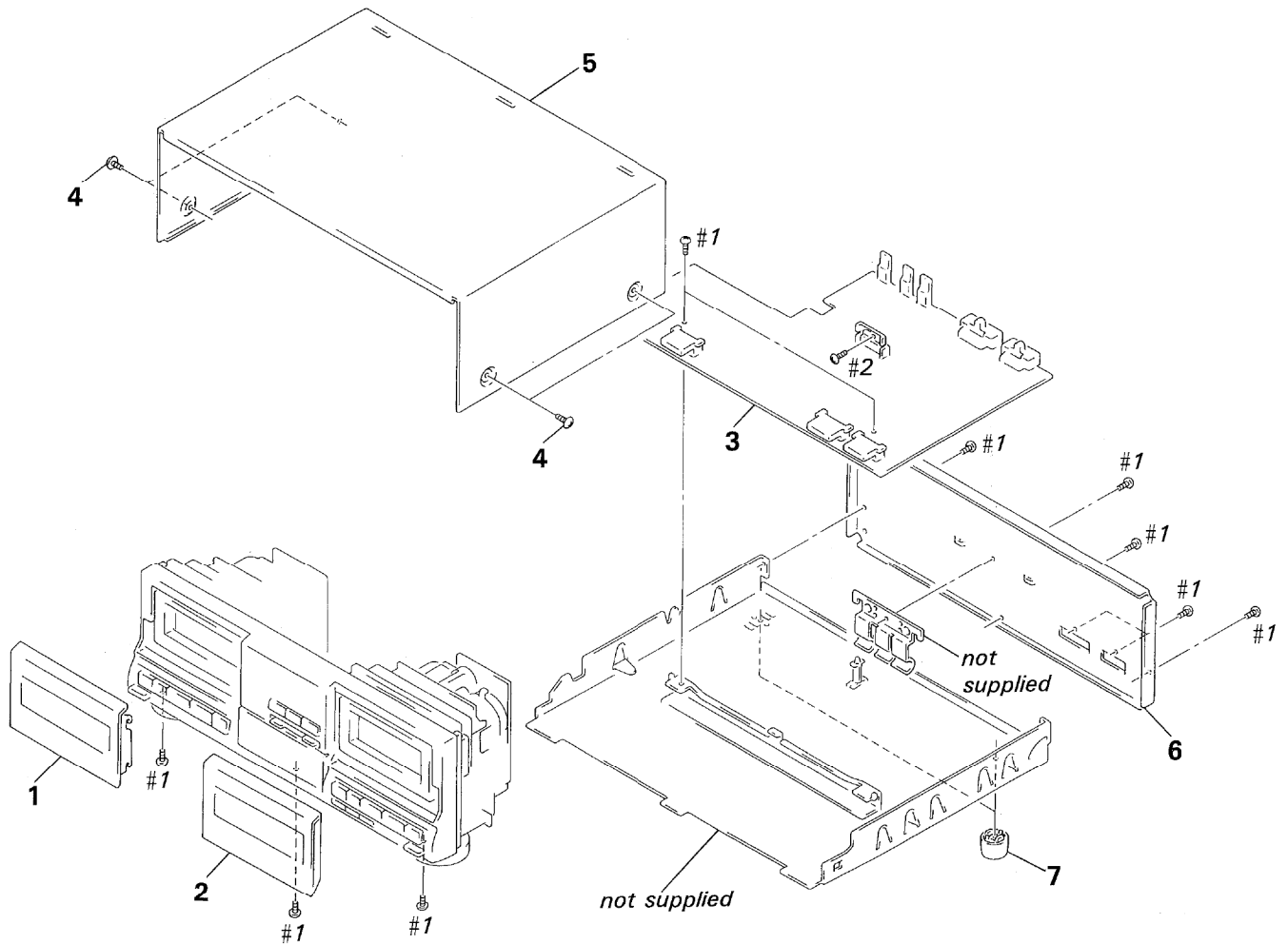
KNOB, BALANCE(WHITE)...(RED)



- Items marked " \* " are not stocked since they are seldom required for routine service. Some delay should be anticipated when ordering these items.
- The mechanical parts with no reference number in the exploded views are not supplied.
- hardware (#mark) list is given in the last of this parts list.

G : Germany  
IT : Italian  
EE : East European  
EA : Saudi Arabia  
AUS : Australian

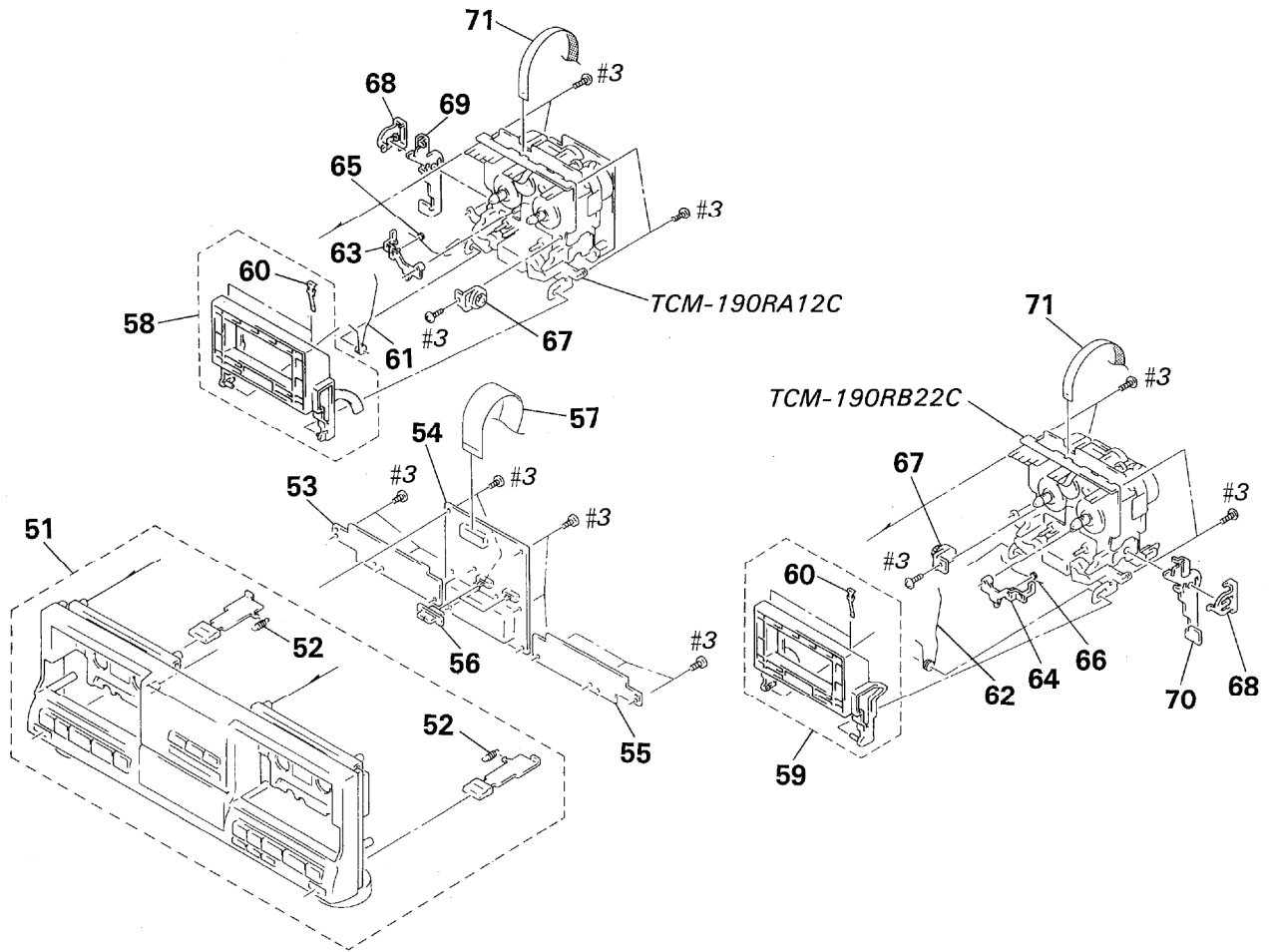
## 6-1. OVERALL SECTION



Ref. No.	Part No.	Description	Remark
1	X-3364-710-1	LID (A) ASSY, CASSETTE (AEP, G, EE, UK, E, EA, AUS)	
1	X-3364-711-1	LID (A) ASSY, CASSETTE (IT)	
2	X-3364-712-1	LID (B) ASSY, CASSETTE (AEP, G, EE, UK, E, EA, AUS)	
2	X-3364-713-1	LID (B) ASSY, CASSETTE (IT)	
* 3	A-2006-741-A	MAIN BOARD, COMPLETE (AEP, G, IT, EE, UK)	

Ref. No.	Part No.	Description	Remark
* 3	A-2006-742-A	MAIN BOARD, COMPLETE (E, EA, AUS)	
4	3-363-099-01	SCREW (CASE +3X8 TP2)	
* 5	4-939-803-31	CASE (AEP, G, EE, UK, E, EA, AUS)	
* 5	4-939-803-71	CASE (IT)	
* 6	3-377-136-11	PANEL, BACK (AEP, IT, EE, UK, E, EA, AUS)	
* 6	3-377-136-21	PANEL, BACK (G)	
7	4-931-169-01	FOOT	

## 6-2. FRONT PANEL SECTION

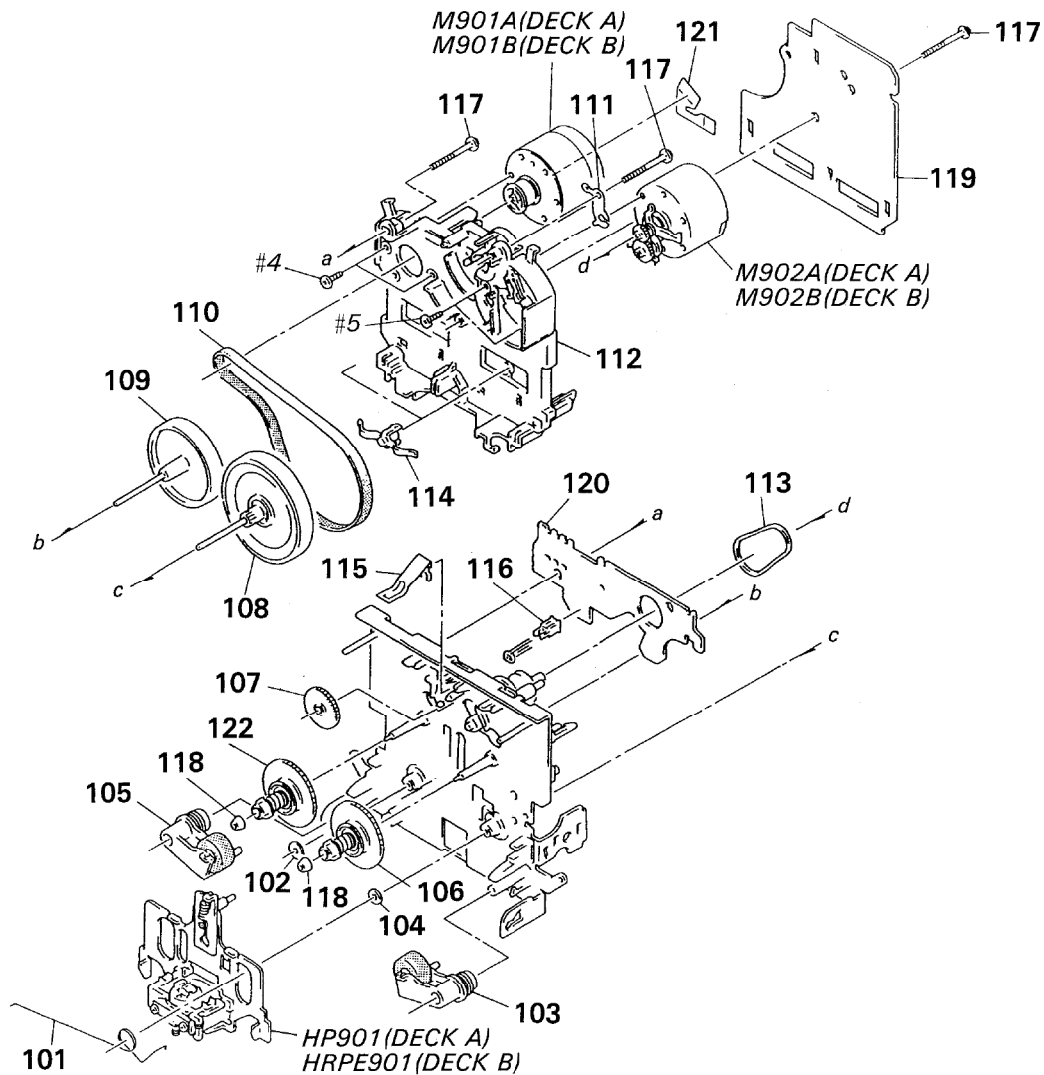


Ref. No.	Part No.	Description	Remark
51	X-3364-706-1	PANEL ASSY, FRONT (AEP, G, EE, UK, E, EA, AUS)	
51	X-3364-707-1	PANEL ASSY, FRONT (IT)	
52	3-662-752-21	SPRING, TENSION	
* 53	1-643-523-11	CONTROL (A) BOARD	
* 54	1-643-521-11	PANEL BOARD	
* 55	1-643-874-11	CONTROL (B) BOARD	
56	3-377-110-01	KNOB (SLIDE) (AEP, G, EE, UK, E, EA, AUS)	
56	3-377-110-11	KNOB (SLIDE) (IT)	
57	1-590-237-11	WIRE, FLAT TYPE (19 CORE)	
58	X-3340-194-1	HOLDER (L) ASSY, CASSETTE	
59	X-3340-195-1	HOLDER (R) ASSY, CASSETTE	
60	3-308-823-11	SPRING	

Ref. No.	Part No.	Description	Remark
61	3-354-959-01	SPRING (LOADING L), TORSION	
62	3-354-960-01	SPRING (LOADING R), TORSION	
63	3-354-955-01	LEVER (EJ SAFTY LEVER L)	
64	3-354-956-01	LEVER (EJ SAFTY LEVER R)	
65	3-354-961-01	SPRING (EJ SAFTY SPRING L)	
66	3-354-962-01	SPRING (EJ SAFTY SPRING R)	
67	3-354-963-01	DAMPFR	
68	3-354-957-01	JOINT (LOCK LEVER)	
* 69	3-363-638-01	LEVER (LOCK LEVER L)	
* 70	3-363-639-01	LEVER (LOCK LEVER R)	
71	1-690-906-11	WIRE (FLAT TYPE) (9 CORE)	

### 6-3. MECHANISM SECTION 1

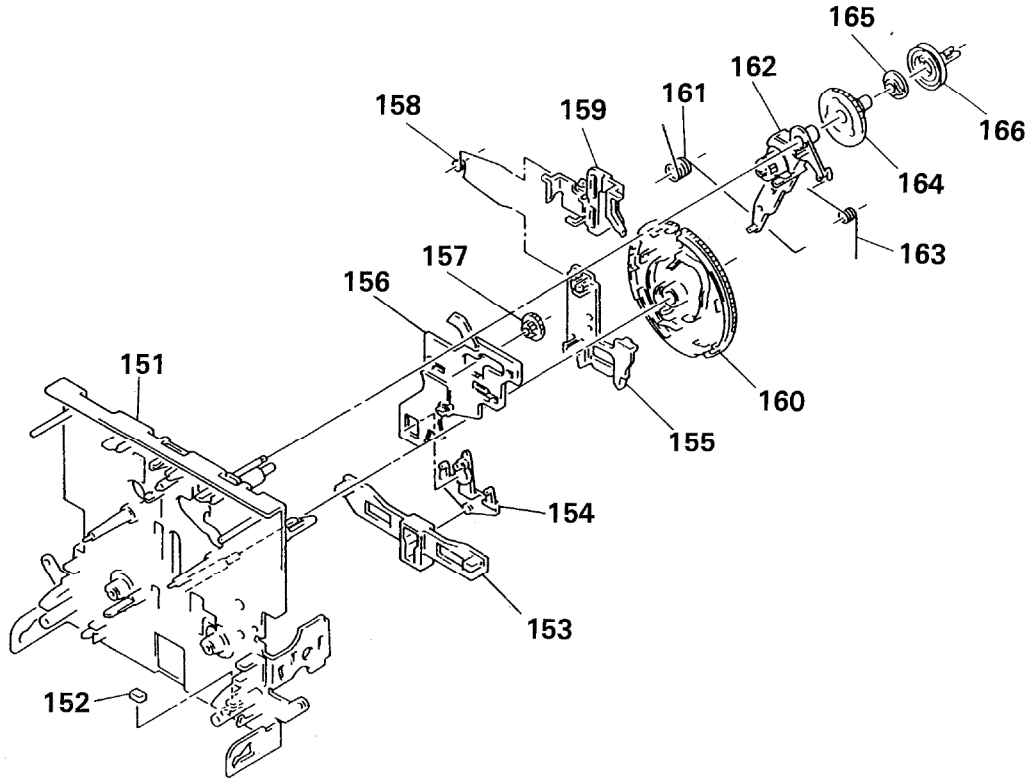
(TCM-190RA12C)  
(TCM-190RB22C)



Ref. No.	Part No.	Description	Remark	Ref. No.	Part No.	Description	Remark
101	3-359-455-01	SPRING, TORSION		116	3-343-419-01	HOLDER (S SENSER A)	
102	3-356-714-01	WASHER		117	3-359-414-01	SCREW (+PTPWH 2X23)	
103	X-3359-408-1	LEVER (PINCH LEVER FWD) ASSY		118	3-362-308-01	CAP (REEL)	
104	3-356-713-01	WASHER		* 119	A-2006-399-A	MD-A BORAD. COMPLETE (DECK A)	
105	X-3359-409-1	LEVER (PINCH LEVER REV) ASSY		* 119	A-2006-400-A	MD-B BOARD, COMPLETE (DECK B)	
106	X-3359-404-1	TABLE ASSY, REEL		* 120	1-634-841-14	SW-A BOARD (DECK A)	
107	3-359-424-01	GEAR (REV GEAR)		* 120	1-634-841-14	SW-B BOARD (DECK B)	
108	X-3359-406-1	FLYWHEEL (FWD) COMPLETE ASSY (DECK A)		121	1-638-983-11	MOTOR FLEXIBLE BOARD	
108	X-3364-554-1	FLYWHEEL (FWD) ASSY (DECK B)		122	X-3362-078-1	TABLE ASSY (B), REEL	
109	X-3359-410-1	FLYWHEEL (REV) ASSY		HP901	A-2003-837-A	BASE ASSY, HEAD (PB) (DECK A)	
110	3-359-417-01	BELT (FLAT), CAPSTAN		HRPE901A-2003-838-A	BASE ASSY, HEAD (REC/PB/ERASE) (DECK B)		
111	3-359-450-01	PLATE, GROUND		M901A	X-3359-417-1	MOTOR ASSY (CAPSTAN) (DECK A)	
* 112	3-359-436-01	BASE (THRUST RETAINER), FITTING		M901B	X-3359-417-1	MOTOR ASSY (CAPSTAN) (DECK B)	
113	3-359-466-01	BELT (FR), SQUARE		M902A	X-3363-501-1	MOTOR ASSY (REEL) (DECK A)	
114	3-575-321-00	RETAINER, THRUST, CAPSTAN		M902B	X-3363-501-1	MOTOR ASSY (REEL) (DECK B)	
115	3-359-430-01	SPRING (CASSETTE RETAINER), LEAF					

## 6-4. MECHANISM SECTION 2

(TCM-190RA12C)  
(TCM-190RB22C)



Ref. No.	Part No.	Description	Remark	Ref. No.	Part No.	Description	Remark
151	X-3363-790-1	CHASSIS ASSY, MECHANICAL (DECK A)		159	3-359-429-01	SLIDER (BRAKE PLATE)	
151	X-3359-415-1	CHASSIS ASSY, MECHANICAL (DECK B)		160	3-359-420-01	GEAR (CAM GEAR)	
152	3-359-469-01	SPACER		161	3-359-456-01	SPRING (TRIGGER SPRING), TORSION	
* 153	3-359-425-01	SLIDER (REVERSE SLIDER)		162	X-3359-405-1	LEVER (FR ARM) ASSY	
154	3-359-426-01	LEVER (REVERSE LEVER)		163	3-359-453-01	SPRING (FR ARM), TORSION	
* 155	3-359-427-01	SLIDER (LEVERSE SLIDER)		164	3-359-419-01	GEAR (FR GEAR)	
* 156	3-359-415-01	SLIDER (TRIGGER SLIDER)		165	3-359-421-01	CLUTCH (REEL DISK)	
157	3-359-448-01	GEAR (TRIGGER)		166	3-359-418-01	PULLEY (FR PULLEY)	
158	3-359-454-01	SPRING, TORSION					