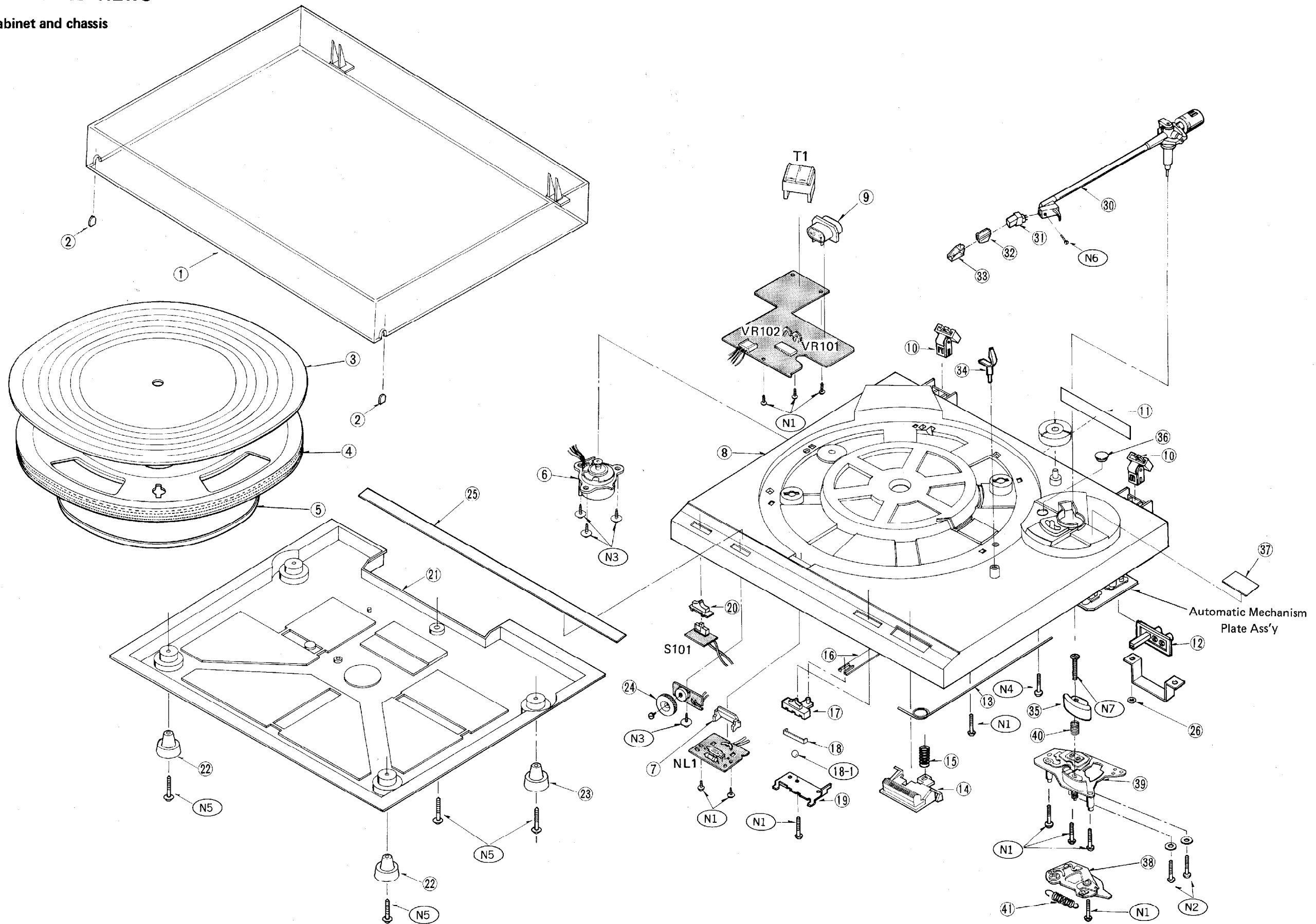


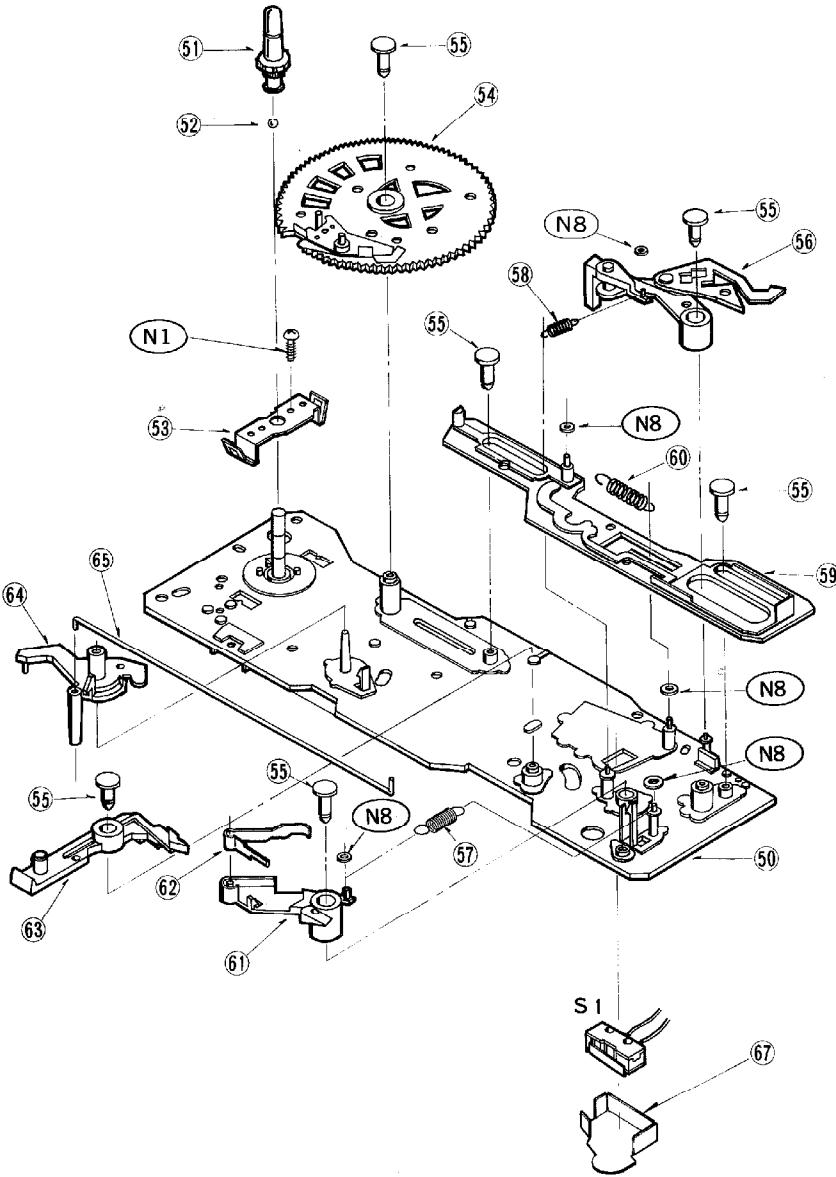
EXPLODED VIEWS

Cabinet and chassis



## EXPLODED VIEWS

### Automatic mechanism plate



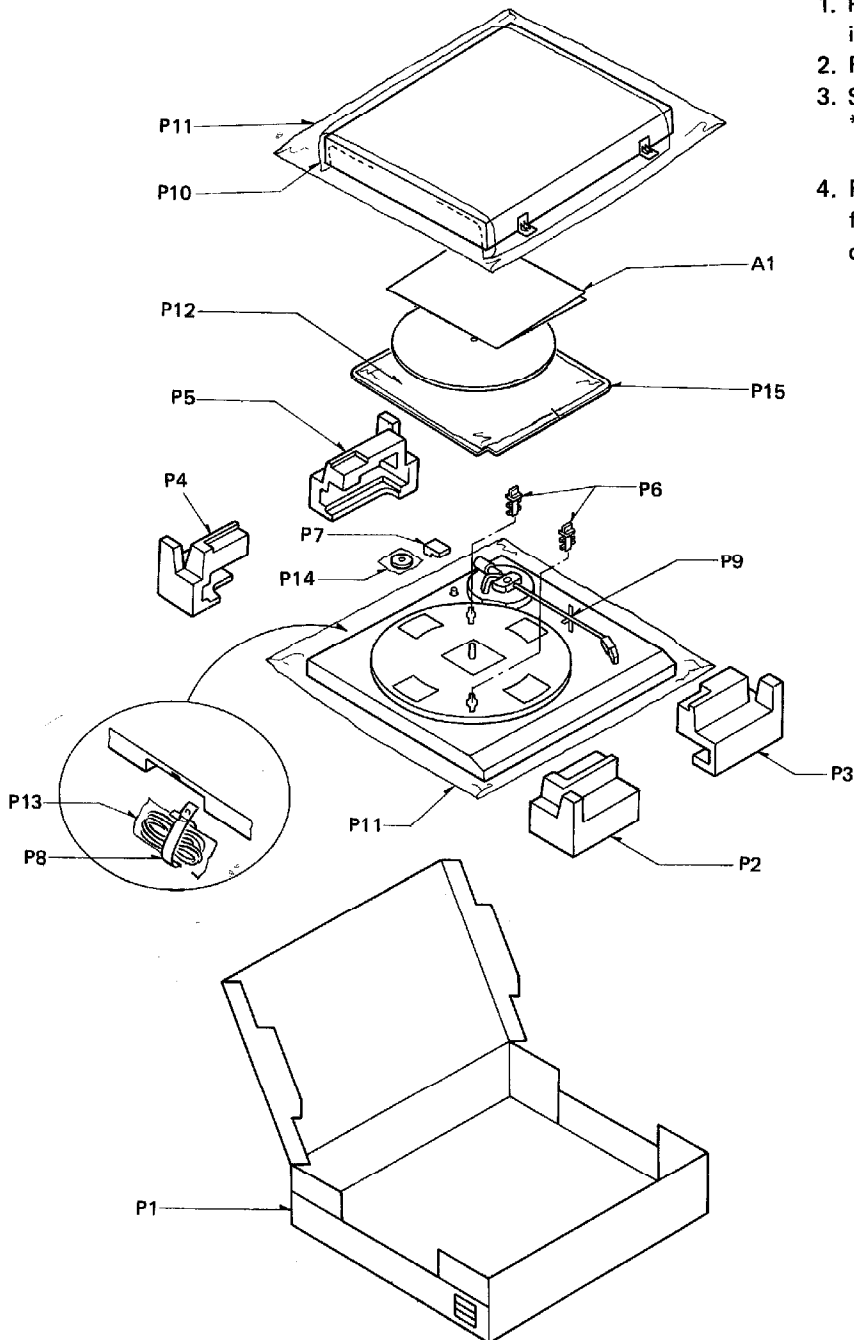
Ref. No.	Part No.	Description	Ref. No.	Part No.	Description	Ref. No.	Part No.	Description
<b>AUTOMATIC MECHANISM ASS'Y</b>			<b>SCREWS and WASHERS</b>			<b>ACCESSORIES</b>		
50	SFUKZ15R51E	Plate, Automatic Mechanism (1)	N1	S XTV3+8BFN	Screw $\oplus 3 \times 8(14)$	A1	(Ei) SFNUB62I01	Instruction Book (1)
51	SFTUZ15R51E	Turntable Shaft(1)	N2	XTN3+F12	Screw, Tonearm $\oplus 3 \times 12$ (2)	A1	{Other Areas} SFNUB62S01	Instruction Book (1)
52	SFYB-5-32	Ball (1)	N3	SFXGB33N01	Screw Motor (5)	A2	{EK} $\Delta$ SFDAC05G02	AC Cord (1)
53	SFUPZ15R55	Plate, Ground (1)	N4	XTV3+30J	Screw $\oplus 3 \times 30(1)$	A2	{XL} $\Delta$ SFDAC05L01	AC Cord (1)
54	SFUGZ15R51E	Main Gear Ass'y (1)	N5	XTW3+14QFYR	Screw, Bottom Board $\oplus 3 \times 14$ (5)	A2	{XA} {XM} $\Delta$ SFDAC05X01	AC Cord (1)
55	SFUMZ15R56	Pin (6)	N6	SFPEVOP301	Tapping Cartridge (1)	A2	{Other Areas} $\Delta$ SFDAC05E02	AC Cord (1)
56	SFUMZ15R54E	Lever Ass'y (1)	N7	XTS3+16FFZ	Screw $\oplus 3 \times 16(1)$	A3	SFWE212-01	45r.p.m Adaptor(1)
57	SFQHZ15R53	Spring (1)	N8	SFXWZ15R51	Washer (3)	A4	{XL} only SFDLC05N01	Ground Wire (1)
58	SFQHZ15R52	Spring (1)	<b>ACCESSORIES</b>			A4	{Other Areas} SFDLZ15R01	Ground Wire (1)
59	SFUBZ15R51	Plate, Drive (1)	A1	{EK}	SFNUB62G01	A5	SFDHC05N01	Phono Cord (1)
60	SFQHZ15R54	Spring (1)	A1	{XL} {XA}	SFNUB62X01	A6	{XA} {XM} only SFDKI19118	2P Plug (1)
61	SFUMZ15R60	Cam, Cueing (1)	A1	{XM}	SFNUB62R01			
62	SFQPZ15R51	Spring Plate (1)	A1	{EG}	SFNUB62F01			
63	SFUMZ15R51	Lever, Cueing Connector (1)	A1	{EF}				
64	SFUMZ15R52	Actuating Rod, Actuating (1)						
65	SFQSZ15R51	Cover, Switch (1)						
67	SFUZB62M01							

## PACKING

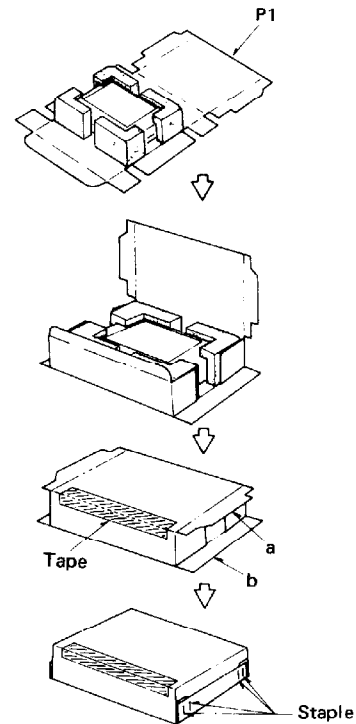
Ref. No.	Part No.	Description
<b>PACKING PARTS</b>		
P1	(EF) ○ SFHPB62C01	Carton Box (Silver) (1)
P1	(EF) ⊗ SFHPB62C21	Carton Box (Black) (1)
P1	(Other Areas) ○ SFHPB62M01	Carton Box (Silver) (1)
P1	(Other Areas) ⊗ SFHPB62M21	Carton Box (Black) (1)
P2	SFH336M01	Pad, Front Left (1)
P3	SFH336M02	Pad, Front Right (1)
P4	SFH336M03	Pad, Rear Left (1)

Ref. No.	Part No.	Description
<b>PACKING PARTS</b>		
P5	SFH336M04	Pad, Rear Right (1)
P6	SFHKZ15R01	Clamper, Turntable (2)
P7	SFHZZ15R01	Pad, Weight (1)
P8	SFHZZ15R02	Stopper, AC Cord (1)
P9	SFHZZ15R03	Clamper, Arm (1)
P10	SFHZD03M01	Sheet (1)
P11	SFYH60X60	Polyethylene, Unit /Dust Cover (2)
P12	SFYF30B35	Sheet (1)

Ref. No.	Part No.	Description
<b>PACKING PARTS</b>		
P13	SFYH17X16	AC Cord (1)
P14	SFYF05A06	Polyethylene 45r.p.m Adaptor (1)
P15	SFHDZ15R01	Pad, Turntable Mat (1)



1. Place the unit (with cushions attached) as illustrated.
2. Fold the flaps according to the line marks.
3. Seal the top with adhesive tape.  
\* Use gum tape or adhesive cloth tape of 50mm wide at least.
4. For the edges, first fold the flap "a" and then flap "b", and staple. Remember to staple only flap "b". (Use 15 or 16mm staple)



\* Stapling positions are shown below.

